



Single Family



3998 SQFT



5 Beds



3/1 Baths



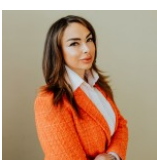
3 Car



0.16 Acre

PROPERTY DETAILS

Welcome to this bright two-story home in Loveland! It features an open floor plan with vaulted ceilings and large windows. Enter through a striking foyer into an airy living room, perfect for entertaining. The dining room connects to a stylish kitchen with granite countertops and stainless steel appliances. Enjoy serene backyard views from the breakfast nook, and cozy up in the family room with a gas fireplace. The main floor primary suite offers a luxurious 5-piece bath and dual walk-in closets. Upstairs, a loft provides a versatile space, along with two bedrooms and a full bath. The spacious basement includes a family room, an additional bedroom, and a laundry area. Outside, relax on the deck in a fully fenced yard with a garden. An oversized garage adds convenience. Close to trails, parks, and shopping, this Loveland gem blends tranquility and accessibility.



Athena Brownson

303-919-9344

athena.brownson@compass.com



Scan code
for more
property
details



4405 Pika Drive, Loveland, CO 80537 – Main Level



TOTAL: 3241 sq. ft
BELOW GROUND: 1016 sq. ft, FLOOR 2: 1521 sq. ft, FLOOR 3: 704 sq. ft
EXCLUDED AREAS: ELECTRICAL ROOM: 150 sq. ft, STORAGE: 234 sq. ft, GARAGE: 596 sq. ft,
DECK: 172 sq. ft, PORCH: 48 sq. ft, OPEN TO BELOW: 504 sq. ft

Floor Plan Created By V1photos.com, Measurements Deamed Highly Reliable But Not Guaranteed.



Disclaimer: Sizes and Dimensions are Approximate, Actual May Vary.



Athena Brownson
303-919-9344
athena.brownson@compass.com



Scan code
for more
property
details



4405 Pika Drive, Loveland, CO 80537 – Upper Level



TOTAL: 3241 sq. ft
BELOW GROUND: 1016 sq. ft, FLOOR 2: 1521 sq. ft, FLOOR 3: 704 sq. ft
EXCLUDED AREAS: ELECTRICAL ROOM: 150 sq. ft, STORAGE: 234 sq. ft, GARAGE: 596 sq. ft,
DECK: 172 sq. ft, PORCH: 48 sq. ft, OPEN TO BELOW: 504 sq. ft

Floor Plan Created By V1photos.com. Measurements Deamed Highly Reliable But Not Guaranteed.



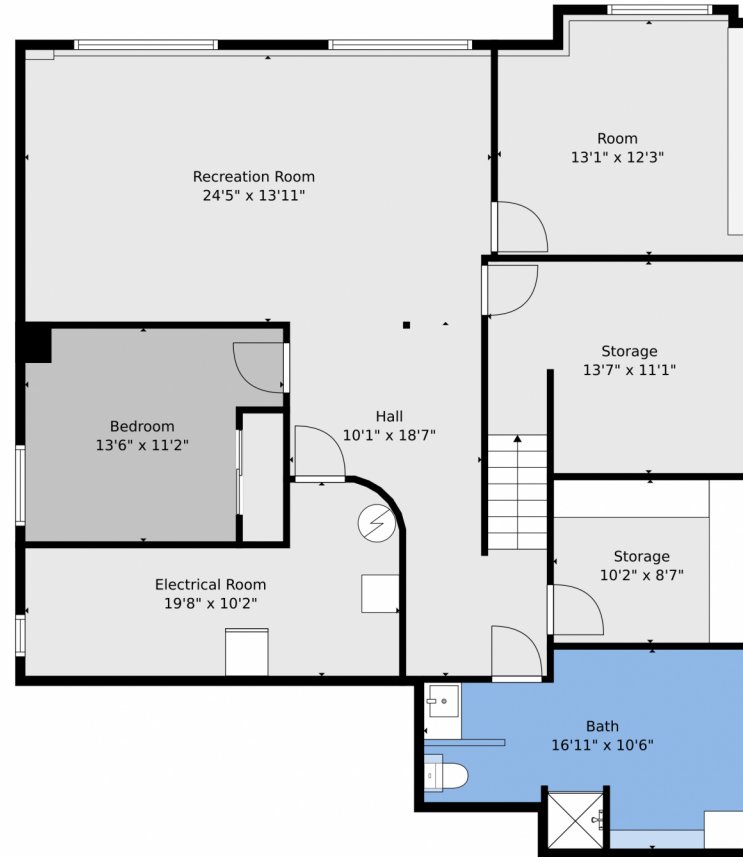
Disclaimer: Sizes and Dimensions are Approximate, Actual May Vary.



Athena Brownson
303-919-9344
athena.brownson@compass.com



4405 Pika Drive, Loveland, CO 80537 – Lower Level



TOTAL: 3241 sq. ft
BELOW GROUND: 1016 sq. ft, FLOOR 2: 1521 sq. ft, FLOOR 3: 704 sq. ft
EXCLUDED AREAS: ELECTRICAL ROOM: 150 sq. ft, STORAGE: 234 sq. ft, GARAGE: 596 sq. ft,
DECK: 172 sq. ft, PORCH: 48 sq. ft, OPEN TO BELOW: 504 sq. ft

Floor Plan Created By V1photos.com, Measurements Deamed Highly Reliable But Not Guaranteed.



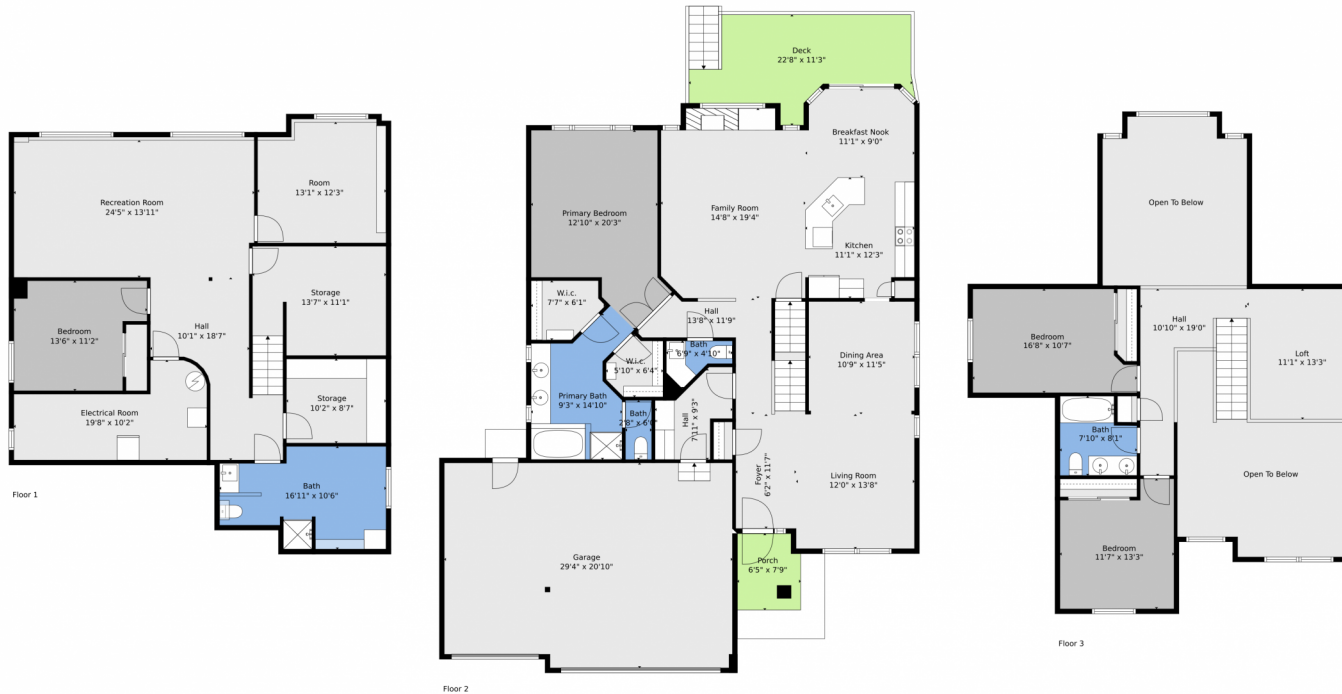
Disclaimer: Sizes and Dimensions are Approximate, Actual May Vary.



Athena Brownson
303-919-9344
athena.brownson@compass.com



4405 Pika Drive, Loveland, CO 80537 – All Levels



TOTAL: 3241 sq. ft
BELOW GROUND: 1016 sq. ft, FLOOR 2: 1521 sq. ft, FLOOR 3: 704 sq. ft
EXCLUDED AREAS: ELECTRICAL ROOM: 150 sq. ft, STORAGE: 234 sq. ft, GARAGE: 596 sq. ft,
DECK: 172 sq. ft, PORCH: 48 sq. ft, OPEN TO BELOW: 504 sq. ft

Floor Plan Created By V1photos.com, Measurements Deamed Highly Reliable But Not Guaranteed.



Disclaimer: Sizes and Dimensions are Approximate, Actual May Vary.



Athena Brownson
303-919-9344
athena.brownson@compass.com

