



215 South Stuart Street
 Denver, CO 80219
COMMUNITY: Barnum West



Single Family



1344 SQFT



3 Beds



2 Baths



0.17 Acre

PROPERTY DETAILS

Welcome to this charming single-family home in Barnum West. This property boasts three spacious bedrooms and two full bathrooms within 1,344 square feet, perfect for families or individuals seeking comfort.

Upon entering, you'll find a bright living room with light wood flooring that enhances the natural light. The open floor plan connects the living and dining areas, ideal for entertaining. The kitchen features elegant green cabinets, stainless steel appliances, and a stylish backsplash.

Each bedroom offers a peaceful retreat, with one featuring cozy carpeting. Modern bathrooms include tiled showers and functional vanities. The outdoor space is inviting, with a front yard for curb appeal and a spacious backyard with a deck and storage shed, perfect for gatherings or relaxation.



Jorge Armstrong

720-233-7091

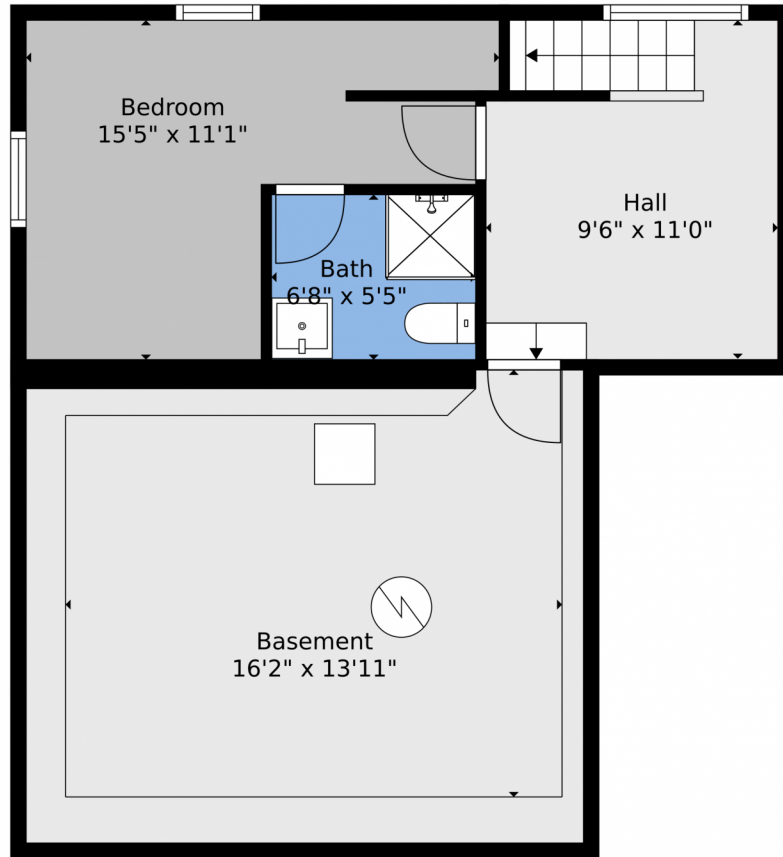
jorge.armstrong@kw.com

<https://www.milehighcitylivinggroup.com/>



Scan code
 for more
 property
 details





TOTAL: 1007 sq. ft
BELOW GROUND: 287 sq. ft, FLOOR 2: 720 sq. ft
EXCLUDED AREAS: BASEMENT: 271 sq. ft, DECK: 198 sq. ft, PORCH: 22 sq. ft
Floor Plan Created By V1photos.com. Measurements Deamed Highly Reliable But Not Guaranteed.



Disclaimer: Sizes and Dimensions are Approximate, Actual May Vary.



Jorge Armstrong
720-233-7091
jorge.armstrong@kw.com
<https://www.milehighcitylivinggroup.com/>



Scan code
for more
property
details



TOTAL: 1007 sq. ft
BELOW GROUND: 287 sq. ft, FLOOR 2: 720 sq. ft
EXCLUDED AREAS: BASEMENT: 271 sq. ft, DECK: 198 sq. ft, PORCH: 22 sq. ft
Floor Plan Created By V1photos.com, Measurements Deamed Highly Reliable But Not Guaranteed.



Disclaimer: Sizes and Dimensions are Approximate, Actual May Vary.



Jorge Armstrong
720-233-7091
jorge.armstrong@kw.com
<https://www.milehighcitylivinggroup.com/>



Scan code
for more
property
details



TOTAL: 1007 sq. ft
BELOW GROUND: 287 sq. ft, FLOOR 2: 720 sq. ft
EXCLUDED AREAS: BASEMENT: 271 sq. ft, DECK: 198 sq. ft, PORCH: 22 sq. ft
Floor Plan Created By V1photos.com. Measurements Deamed Highly Reliable But Not Guaranteed.



Disclaimer: Sizes and Dimensions are Approximate, Actual May Vary.



Jorge Armstrong
720-233-7091
jorge.armstrong@kw.com
<https://www.milehighcitylivinggroup.com/>

