 Single Family

 1941 SQFT

 3 Beds

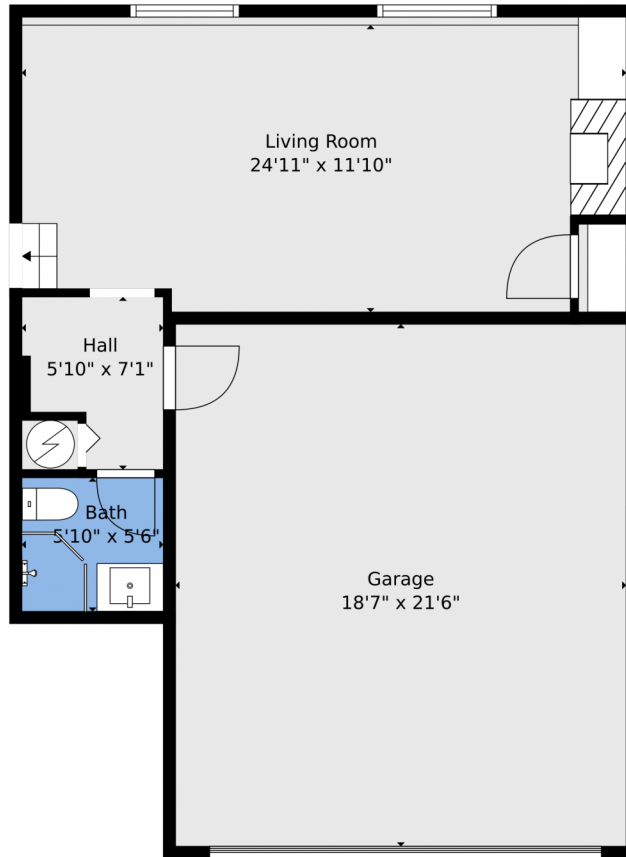
 2 Baths



Taylor Haas
303-665-7368
taylorh@coloradorpm.com
<https://www.coloradorpm.com/available-rental-properties-denver>



5554 Mosquito Pass Drive, Colorado Springs, CO 80917 – Lower Level



TOTAL: 1504 sq. ft
BELOW GROUND: 376 sq. ft, FLOOR 2: 465 sq. ft, FLOOR 3: 663 sq. ft
EXCLUDED AREAS: GARAGE: 399 sq. ft, STORAGE: 55 sq. ft, PATIO: 162 sq. ft,
DECK: 30 sq. ft, PORCH: 19 sq. ft

Floor Plan Created By V1photos.com. Measurements Deamed Highly Reliable But Not Guaranteed.



Disclaimer: Sizes and Dimensions are Approximate, Actual May Vary.

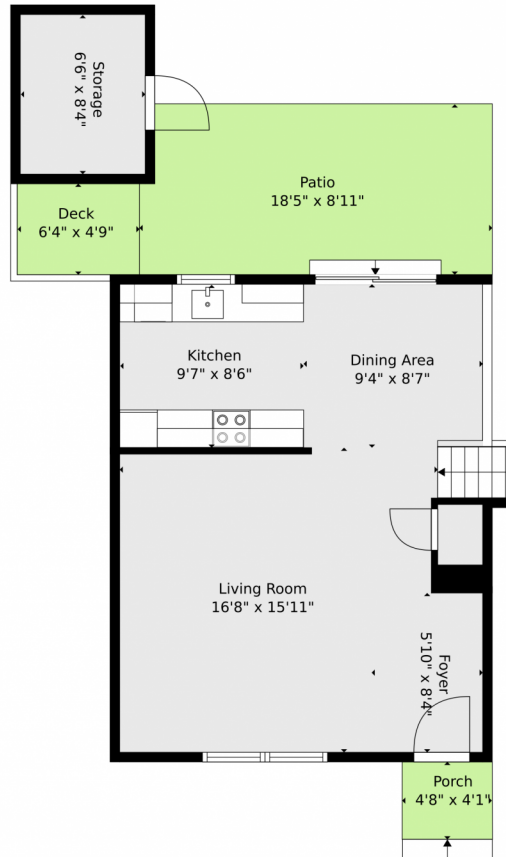


Taylor Haas
303-665-7368
taylorh@coloradorpm.com
<https://www.coloradorpm.com/available-rental-properties-denver>



Scan code
for more
property
details

5554 Mosquito Pass Drive, Colorado Springs, CO 80917 – Main Level



TOTAL: 1504 sq. ft
BELOW GROUND: 376 sq. ft, FLOOR 2: 465 sq. ft, FLOOR 3: 663 sq. ft
EXCLUDED AREAS: GARAGE: 399 sq. ft, STORAGE: 55 sq. ft, PATIO: 162 sq. ft,
DECK: 30 sq. ft, PORCH: 19 sq. ft

Floor Plan Created By V1photos.com. Measurements Deamed Highly Reliable But Not Guaranteed.



Disclaimer: Sizes and Dimensions are Approximate, Actual May Vary.



Taylor Haas

303-665-7368

taylorh@coloradorpm.com

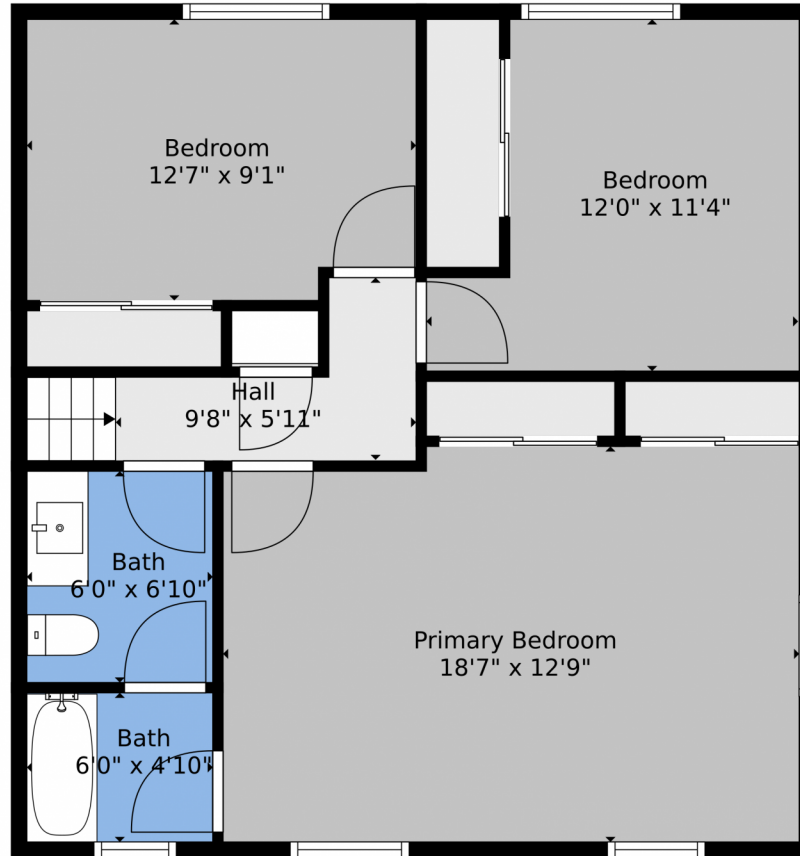
<https://www.coloradorpm.com/available-rental-properties-denver>



Scan code
for more
property
details



5554 Mosquito Pass Drive, Colorado Springs, CO 80917 – Upper Level



TOTAL: 1504 sq. ft
BELOW GROUND: 376 sq. ft, FLOOR 2: 465 sq. ft, FLOOR 3: 663 sq. ft
EXCLUDED AREAS: GARAGE: 399 sq. ft, STORAGE: 55 sq. ft, PATIO: 162 sq. ft,
DECK: 30 sq. ft, PORCH: 19 sq. ft

Floor Plan Created By V1photos.com, Measurements Deamed Highly Reliable But Not Guaranteed.



Disclaimer: Sizes and Dimensions are Approximate, Actual May Vary.



Taylor Haas
303-665-7368
taylorh@coloradorpm.com
<https://www.coloradorpm.com/available-rental-properties-denver>



Scan code
for more
property
details



5554 Mosquito Pass Drive, Colorado Springs, CO 80917 – All Levels



TOTAL: 1504 sq. ft
BELOW GROUND: 376 sq. ft, FLOOR 2: 465 sq. ft, FLOOR 3: 663 sq. ft
EXCLUDED AREAS: GARAGE: 399 sq. ft, STORAGE: 55 sq. ft, PATIO: 162 sq. ft,
DECK: 30 sq. ft, PORCH: 19 sq. ft

Floor Plan Created By V1photos.com, Measurements Deamed Highly Reliable But Not Guaranteed.



Disclaimer: Sizes and Dimensions are Approximate, Actual May Vary.



Taylor Haas
303-665-7368
taylorh@coloradorpm.com
<https://www.coloradorpm.com/available-rental-properties-denver>

