



Single Family



3800 SQFT



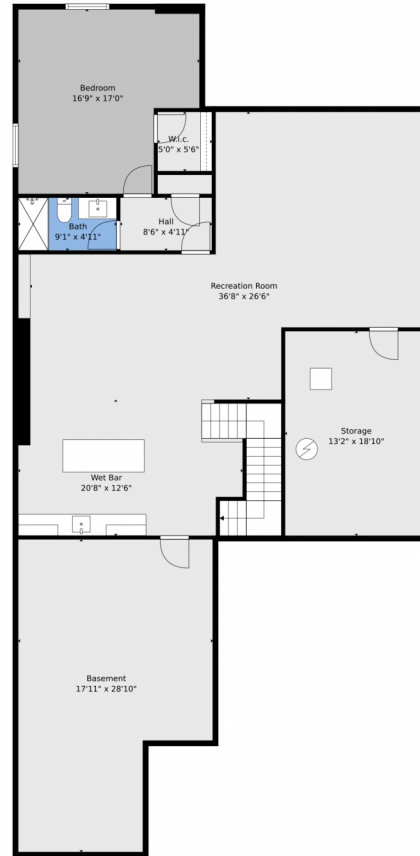
**Todd Stordahl**  
303-997-1177  
todd.stordahl@yahoo.com



Scan code  
for more  
property  
details



# 6803 Canyonpoint Road, Castle Pines, CO 80108 – Lower Level



**TOTAL: 3640 sq. ft**  
BELOW GROUND: 1391 sq. ft, FLOOR 2: 2249 sq. ft  
EXCLUDED AREAS: BASEMENT: 450 sq. ft, STORAGE: 248 sq. ft, PATIO: 327 sq. ft,  
PORCH: 253 sq. ft, GARAGE: 512 sq. ft

Floor Plan Created By V1photos.com, Measurements Deamed Highly Reliable But Not Guaranteed.



Disclaimer: Sizes and Dimensions are Approximate, Actual May Vary.

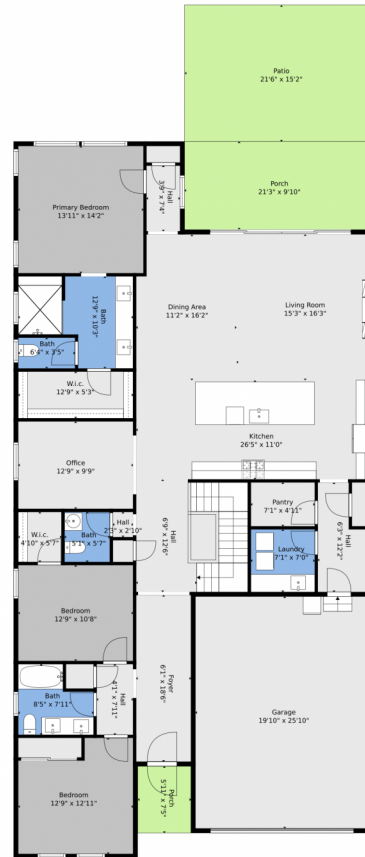


**Todd Stordahl**  
303-997-1177  
todd.stordahl@yahoo.com



Scan code  
for more  
property  
details

# 6803 Canyonpoint Road, Castle Pines, CO 80108 – Main Level



**TOTAL: 3640 sq. ft**  
BELOW GROUND: 1391 sq. ft, FLOOR 2: 2249 sq. ft  
EXCLUDED AREAS: BASEMENT: 450 sq. ft, STORAGE: 248 sq. ft, PATIO: 327 sq. ft,  
PORCH: 253 sq. ft, GARAGE: 512 sq. ft

Floor Plan Created By V1photos.com, Measurements Deamed Highly Reliable But Not Guaranteed.



Disclaimer: Sizes and Dimensions are Approximate, Actual May Vary.



**Todd Stordahl**  
303-997-1177  
todd.stordahl@yahoo.com



# 6803 Canyonpoint Road, Castle Pines, CO 80108 – All Levels



**TOTAL: 3640 sq. ft**  
 BELOW GROUND: 1391 sq. ft, FLOOR 2: 2249 sq. ft  
 EXCLUDED AREAS: BASEMENT: 450 sq. ft, STORAGE: 248 sq. ft, PATIO: 327 sq. ft,  
 PORCH: 253 sq. ft, GARAGE: 512 sq. ft

Floor Plan Created By V1photos.com, Measurements Deamed Highly Reliable But Not Guaranteed.



Disclaimer: Sizes and Dimensions are Approximate, Actual May Vary.



**Todd Stordahl**  
 303-997-1177  
 todd.stordahl@yahoo.com

