



Single Family



3300 SQFT



5 Beds



3/1 Baths



1 Car



1.25 Acre

PROPERTY DETAILS

Charming 1890's farmhouse with ADU on over an acre! This beautifully preserved home features 4 bedrooms and 3 bathrooms, plus a 1-bedroom, 1-bathroom ADU above the garage—ideal for guests or rental income. Enjoy serene views from the spacious covered front porch, and relax indoors by the cozy gas fireplace. The open layout connects the living room, dining area, and kitchen, perfect for entertaining. This property includes solar panels for energy efficiency and offers potential for privacy as landscaping matures. Experience the perfect blend of country living and city amenities. Don't miss out on this unique opportunity!



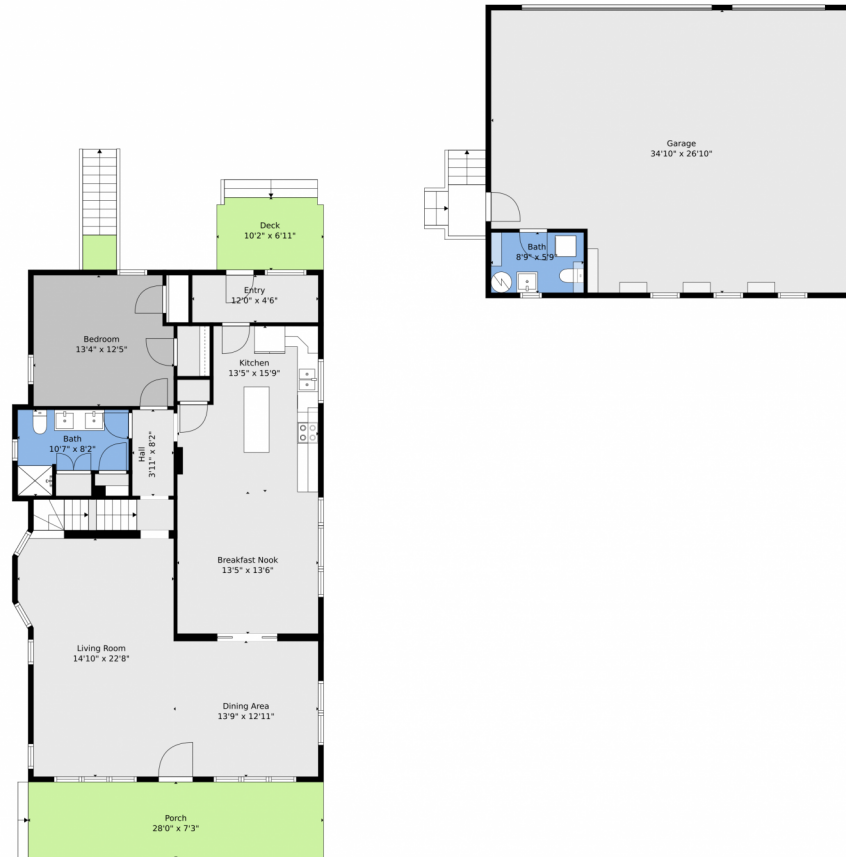
Charles Coleman
303-506-9278
charlescoleman@kw.com



Scan code
for more
property
details



9300 Wadsworth Boulevard, Westminster, CO 80021 – Main Level



TOTAL: 3333 sq. ft
BELOW GROUND: 528 sq. ft, FLOOR 2: 1363 sq. ft, FLOOR 3: 1442 sq. ft
EXCLUDED AREAS: DECK: 69 sq. ft, PORCH: 204 sq. ft, GARAGE: 881 sq. ft,
LOW CEILING: 240 sq. ft

Floor Plan Created By V1photos.com, Measurements Deamed Highly Reliable But Not Guaranteed.



Disclaimer: Sizes and Dimensions are Approximate, Actual May Vary.

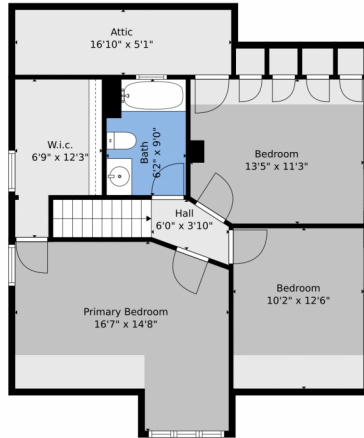
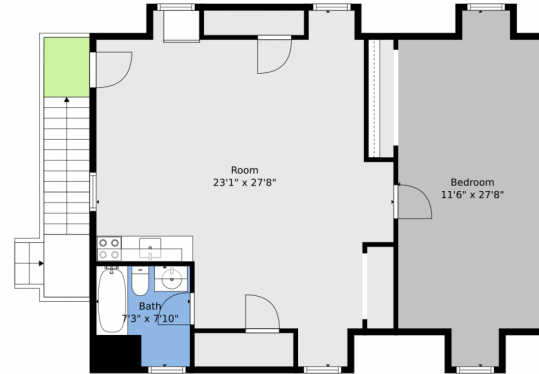


Charles Coleman
303-506-9278
charlescoleman@kw.com



Scan code
for more
property
details

9300 Wadsworth Boulevard, Westminster, CO 80021 – Upper Level



TOTAL: 3333 sq. ft
BELOW GROUND: 528 sq. ft, FLOOR 2: 1363 sq. ft, FLOOR 3: 1442 sq. ft
EXCLUDED AREAS: DECK: 69 sq. ft, PORCH: 204 sq. ft, GARAGE: 881 sq. ft,
LOW CEILING: 240 sq. ft

Floor Plan Created By V1photos.com, Measurements Deamed Highly Reliable But Not Guaranteed.



Disclaimer: Sizes and Dimensions are Approximate, Actual May Vary.

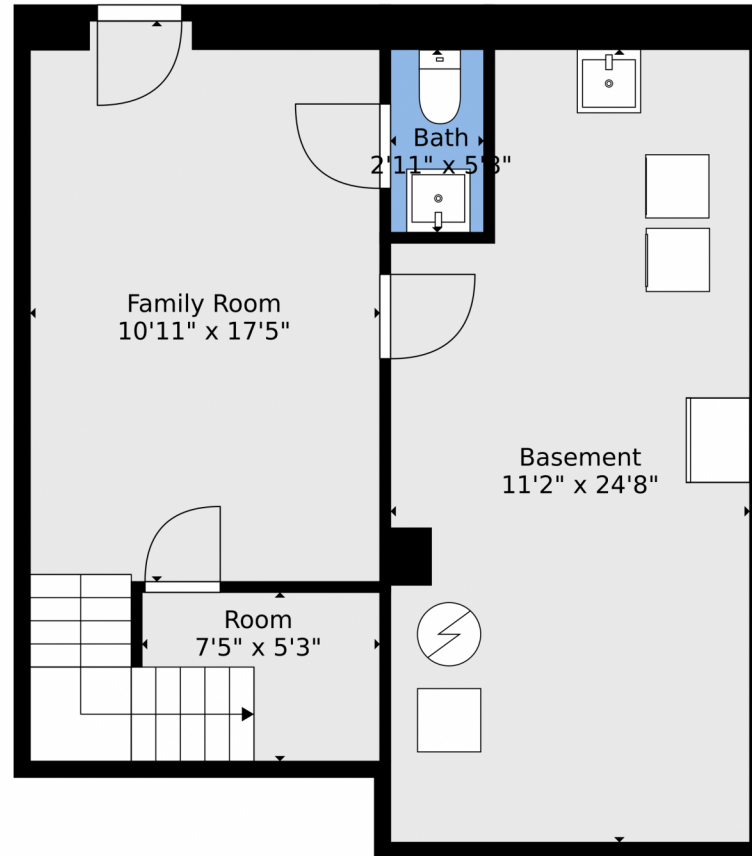


Charles Coleman
303-506-9278
charlescoleman@kw.com



Scan code
for more
property
details





TOTAL: 3333 sq. ft
BELOW GROUND: 528 sq. ft, FLOOR 2: 1363 sq. ft, FLOOR 3: 1442 sq. ft
EXCLUDED AREAS: DECK: 69 sq. ft, PORCH: 204 sq. ft, GARAGE: 881 sq. ft,
LOW CEILING: 240 sq. ft

Floor Plan Created By V1photos.com, Measurements Deamed Highly Reliable But Not Guaranteed.



Disclaimer: Sizes and Dimensions are Approximate, Actual May Vary.

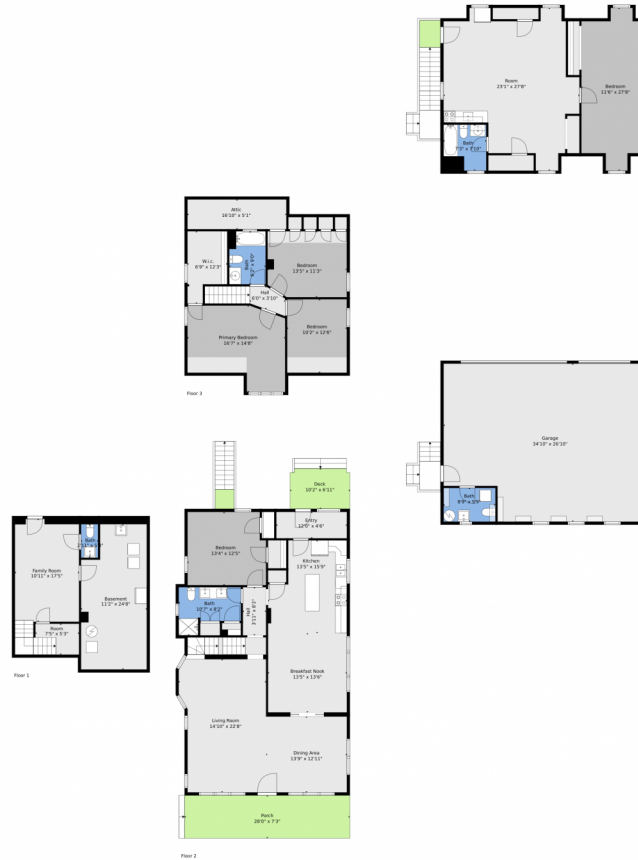


Charles Coleman
303-506-9278
charlescoleman@kw.com



Scan code
for more
property
details

9300 Wadsworth Boulevard, Westminster, CO 80021 – All Levels



TOTAL: 3333 sq. ft
BELOW GROUND: 528 sq. ft, FLOOR 2: 1363 sq. ft, FLOOR 3: 1442 sq. ft
EXCLUDED AREAS: DECK: 69 sq. ft, PORCH: 204 sq. ft, GARAGE: 881 sq. ft,
LOW CEILING: 240 sq. ft

Floor Plan Created By V1photos.com, Measurements Deamed Highly Reliable But Not Guaranteed.



Disclaimer: Sizes and Dimensions are Approximate, Actual May Vary.



Charles Coleman
303-506-9278
charlescoleman@kw.com



Scan code
for more
property
details

