



Single Family



3252 SQFT



5 Beds



3/4 Baths



2 Car



0.27 Acre

## PROPERTY DETAILS

Beautifully remodeled two-story home in the highly sought-after Ken Caryl Ranch. This home features a stunning updated kitchen with granite countertops and stainless steel appliances, along with fresh flooring, updated bathrooms, and modern light fixtures throughout. The large backyard is perfect for relaxation or entertaining, complete with a covered patio with tongue and groove ceiling, hot tub, and a shed for extra storage space. Recent updates include a new attic fan and a replaced sewer line for added peace of mind. Enjoy outdoor living on both front and back patios. With beautiful updates throughout, this home is truly move-in ready. The community offers exceptional amenities such as pools, tennis courts, frisbee golf, scenic walking trails, and a clubhouse with breathtaking views. Basement bedroom offers great flexibility for your needs as a home office, workout room, etc. Blue Ribbon Home Warranty included.



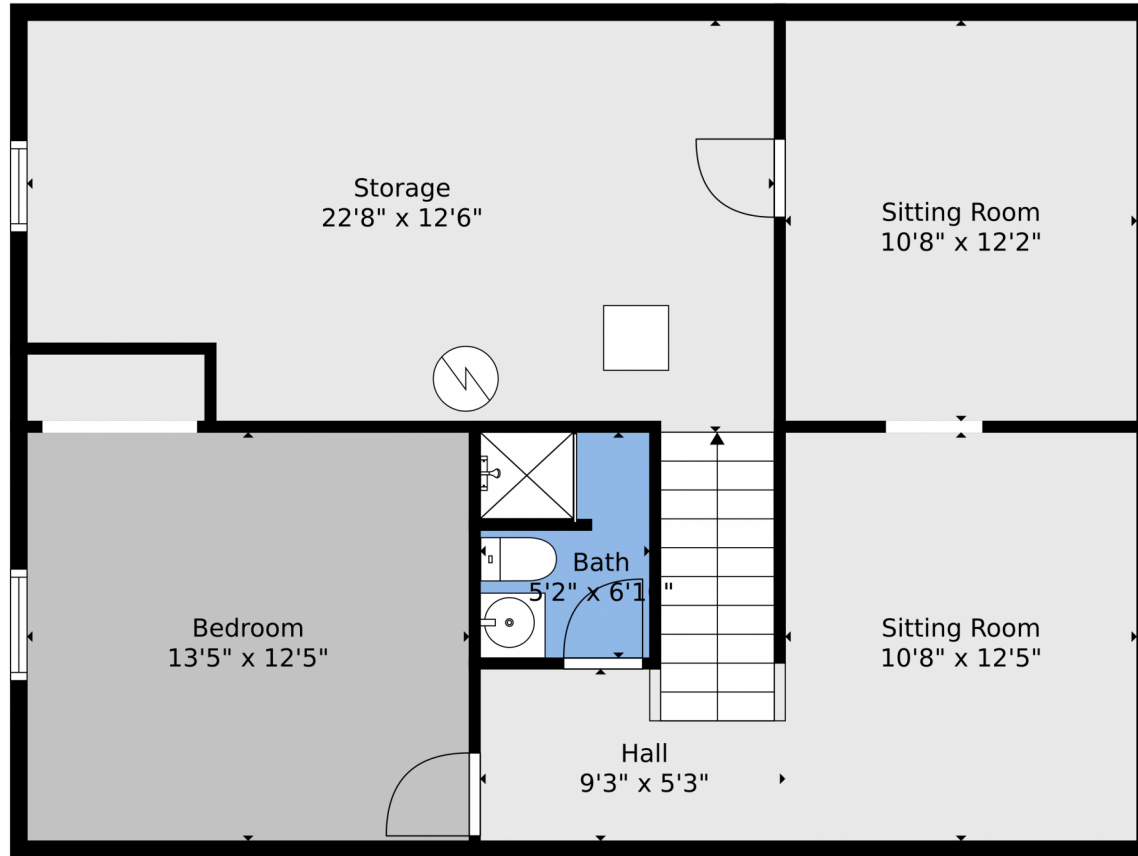
**Kelly Bethe**  
720-828-2350  
kelly@kellybrealstate.com



Scan code  
for more  
property  
details



7618 South Waverly Mountain, Littleton, CO 80127 – Basement



**TOTAL: 2738 sq. ft**  
BELOW GROUND: 577 sq. ft, FLOOR 2: 1219 sq. ft, FLOOR 3: 942 sq. ft  
EXCLUDED AREAS: STORAGE: 264 sq. ft, GARAGE: 407 sq. ft, PATIO: 298 sq. ft,  
PORCH: 193 sq. ft, FIREPLACE: 8 sq. ft

Floor Plan Created By V1photos.com, Measurements Deamed Highly Reliable But Not Guaranteed.



Disclaimer: Sizes and Dimensions are Approximate, Actual May Vary.



**Kelly Bethe**  
720-828-2350  
kelly@kellybrealstate.com



# 7618 South Waverly Mountain, Littleton, CO 80127 – Main Level



**TOTAL: 2738 sq. ft**  
BELOW GROUND: 577 sq. ft, FLOOR 2: 1219 sq. ft, FLOOR 3: 942 sq. ft  
EXCLUDED AREAS: STORAGE: 264 sq. ft, GARAGE: 407 sq. ft, PATIO: 298 sq. ft,  
PORCH: 193 sq. ft, FIREPLACE: 8 sq. ft

Floor Plan Created By V1photos.com, Measurements Deamed Highly Reliable But Not Guaranteed.



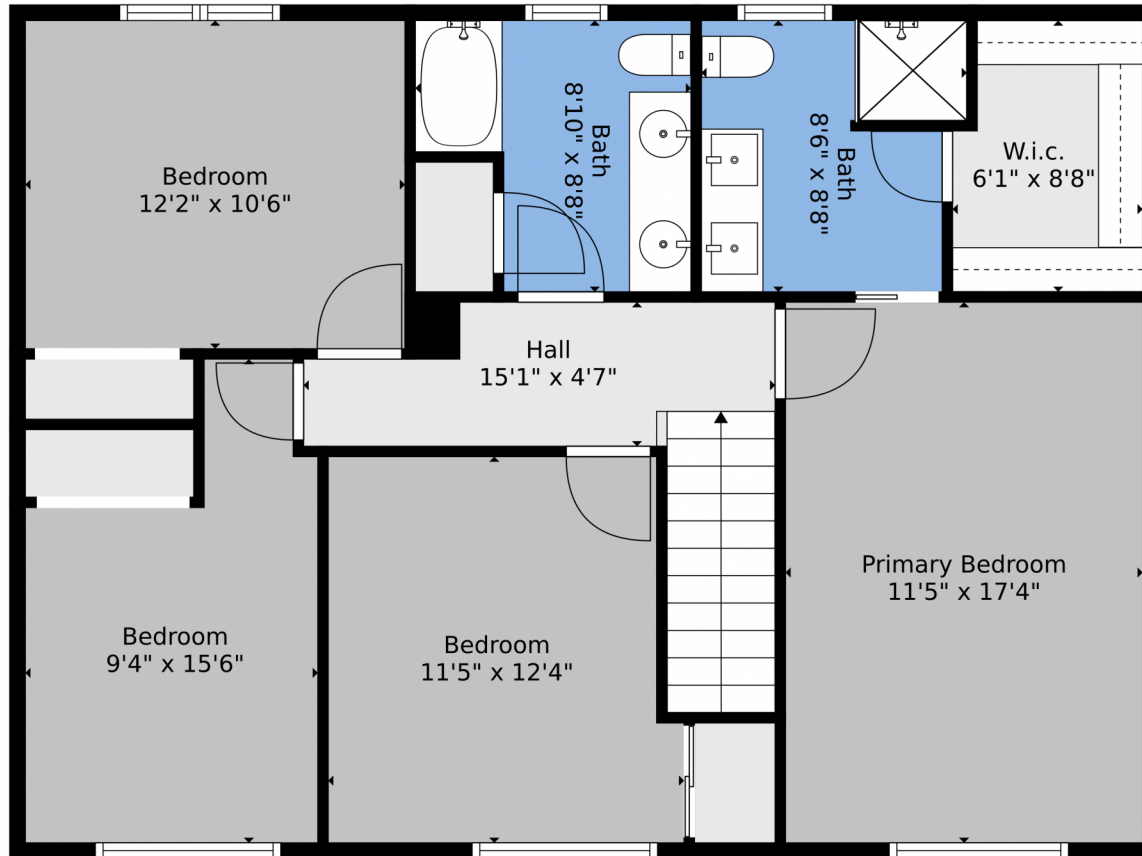
Disclaimer: Sizes and Dimensions are Approximate, Actual May Vary.



**Kelly Bethe**  
720-828-2350  
kelly@kellybrealstate.com



7618 South Waverly Mountain, Littleton, CO 80127 – 2nd Level



**TOTAL: 2738 sq. ft**  
BELOW GROUND: 577 sq. ft, FLOOR 2: 1219 sq. ft, FLOOR 3: 942 sq. ft  
EXCLUDED AREAS: STORAGE: 264 sq. ft, GARAGE: 407 sq. ft, PATIO: 298 sq. ft,  
PORCH: 193 sq. ft, FIREPLACE: 8 sq. ft

Floor Plan Created By V1photos.com, Measurements Deamed Highly Reliable But Not Guaranteed.



Disclaimer: Sizes and Dimensions are Approximate, Actual May Vary.



**Kelly Bethe**  
720-828-2350  
kelly@kellybrealstate.com





# 7618 South Waverly Mountain, Littleton, CO 80127 – All Levels



**TOTAL: 2738 sq. ft**  
 BELOW GROUND: 577 sq. ft, FLOOR 2: 1219 sq. ft, FLOOR 3: 942 sq. ft  
 EXCLUDED AREAS: STORAGE: 264 sq. ft, GARAGE: 407 sq. ft, PATIO: 298 sq. ft,  
 PORCH: 193 sq. ft, FIREPLACE: 8 sq. ft

Floor Plan Created By V1photos.com, Measurements Deamed Highly Reliable But Not Guaranteed.



Disclaimer: Sizes and Dimensions are Approximate, Actual May Vary.



**Kelly Bethe**  
 720-828-2350  
 kelly@kellybrealestate.com

