




 Single Family

 2608 SQFT

 4 Beds

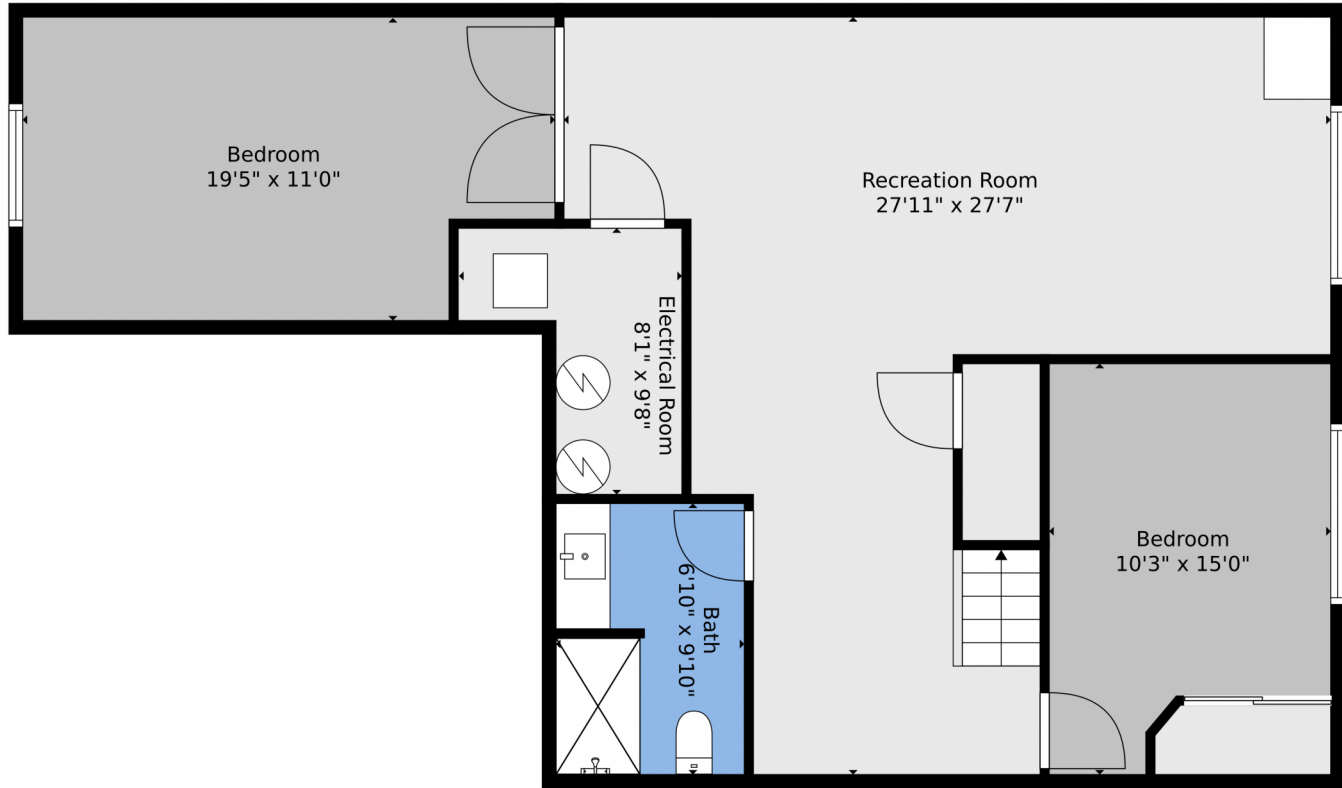
 2/1 Baths



Taylor Haas
303-665-7368
taylorh@coloradorpm.com
<https://www.coloradorpm.com/available-rental-properties-denver>



17603 Water Flume Way, Monument, CO 80132 – Lower Level



TOTAL: 3489 sq. ft
BELOW GROUND: 938 sq. ft, FLOOR 2: 1198 sq. ft, FLOOR 3: 1353 sq. ft
EXCLUDED AREAS: ELECTRICAL ROOM: 56 sq. ft, GARAGE: 609 sq. ft, PORCH: 145 sq. ft,
PATIO: 477 sq. ft, FIREPLACE: 13 sq. ft, OPEN TO BELOW: 79 sq. ft

Floor Plan Created By V1photos.com, Measurements Deamed Highly Reliable But Not Guaranteed.



Disclaimer: Sizes and Dimensions are Approximate, Actual May Vary.



Taylor Haas
303-665-7368
taylorh@coloradorp.com
<https://www.coloradorp.com/available-rental-properties-denver>



Scan code
for more
property
details



17603 Water Flume Way, Monument, CO 80132 – Main Level



TOTAL: 3489 sq. ft
BELOW GROUND: 938 sq. ft, FLOOR 2: 1198 sq. ft, FLOOR 3: 1353 sq. ft
EXCLUDED AREAS: ELECTRICAL ROOM: 56 sq. ft, GARAGE: 609 sq. ft, PORCH: 145 sq. ft,
PATIO: 477 sq. ft, FIREPLACE: 13 sq. ft, OPEN TO BELOW: 79 sq. ft

Floor Plan Created By V1photos.com, Measurements Deamed Highly Reliable But Not Guaranteed.



Disclaimer: Sizes and Dimensions are Approximate, Actual May Vary.



Taylor Haas
303-665-7368
taylorh@coloradorpm.com
<https://www.coloradorpm.com/available-rental-properties-denver>



Scan code
for more
property
details



17603 Water Flume Way, Monument, CO 80132 – Upper Level



TOTAL: 3489 sq. ft
BELOW GROUND: 938 sq. ft, FLOOR 2: 1198 sq. ft, FLOOR 3: 1353 sq. ft
EXCLUDED AREAS: ELECTRICAL ROOM: 56 sq. ft, GARAGE: 609 sq. ft, PORCH: 145 sq. ft,
PATIO: 477 sq. ft, FIREPLACE: 13 sq. ft, OPEN TO BELOW: 79 sq. ft

Floor Plan Created By V1photos.com, Measurements Deamed Highly Reliable But Not Guaranteed.



Disclaimer: Sizes and Dimensions are Approximate, Actual May Vary.



Taylor Haas
303-665-7368
taylorh@coloradorpm.com
<https://www.coloradorpm.com/available-rental-properties-denver>



Scan code
for more
property
details



17603 Water Flume Way, Monument, CO 80132 – All Levels



TOTAL: 3489 sq. ft
 BELOW GROUND: 938 sq. ft, FLOOR 2: 1198 sq. ft, FLOOR 3: 1353 sq. ft
 EXCLUDED AREAS: ELECTRICAL ROOM: 56 sq. ft, GARAGE: 609 sq. ft, PORCH: 145 sq. ft,
 PATIO: 477 sq. ft, FIREPLACE: 13 sq. ft, OPEN TO BELOW: 79 sq. ft

Floor Plan Created By V1photos.com, Measurements Deamed Highly Reliable But Not Guaranteed.



Disclaimer: Sizes and Dimensions are Approximate, Actual May Vary.



Taylor Haas
 303-665-7368
 taylorh@coloradorpm.com
<https://www.coloradorpm.com/available-rental-properties-denv>

