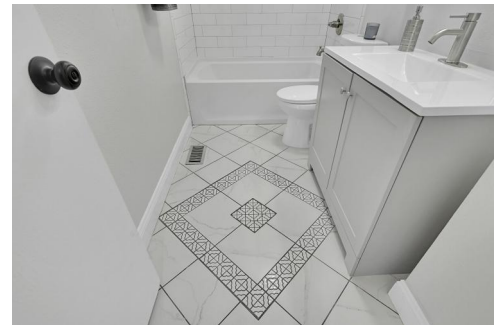





1524 Saratoga Drive
Colorado Springs, CO 80910



 Single Family

 2120 SQFT

 4 Beds

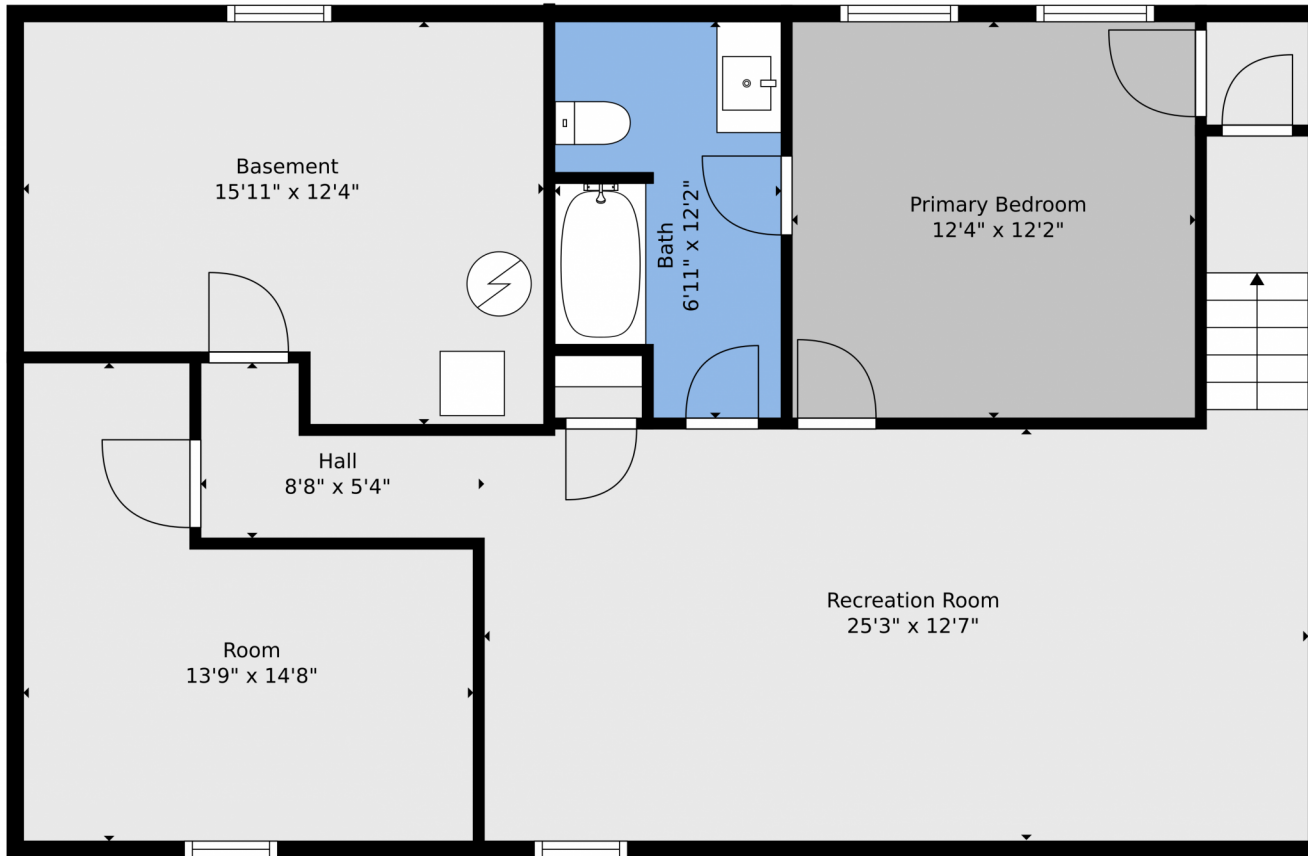
 2 Baths

 1 Car

Terry Moss
720-651-1734
tmoss@wedgewoodhomes.com



1524 Saratoga Drive, Colorado Springs, CO 80910 – Lower Level



TOTAL: 1979 sq. ft
BELOW GROUND: 989 sq. ft, FLOOR 2: 990 sq. ft
EXCLUDED AREAS: GARAGE: 267 sq. ft, PATIO: 496 sq. ft, PORCH: 92 sq. ft
Floor Plan Created By V1photos.com, Measurements Deamed Highly Reliable But Not Guaranteed.



Disclaimer: Sizes and Dimensions are Approximate, Actual May Vary.

Terry Moss
720-651-1734
tmoss@wedgewoodhomes.com



1524 Saratoga Drive, Colorado Springs, CO 80910 – Main Level



TOTAL: 1979 sq. ft
BELOW GROUND: 989 sq. ft, FLOOR 2: 990 sq. ft
EXCLUDED AREAS: GARAGE: 267 sq. ft, PATIO: 496 sq. ft, PORCH: 92 sq. ft
Floor Plan Created By V1photos.com, Measurements Deamed Highly Reliable But Not Guaranteed.



Disclaimer: Sizes and Dimensions are Approximate, Actual May Vary.

Terry Moss
720-651-1734
tmoss@wedgewoodhomes.com



Scan code
for more
property
details

1524 Saratoga Drive, Colorado Springs, CO 80910 – All Levels



TOTAL: 1979 sq. ft
BELOW GROUND: 989 sq. ft, FLOOR 2: 990 sq. ft
EXCLUDED AREAS: GARAGE: 267 sq. ft, PATIO: 496 sq. ft, PORCH: 92 sq. ft
Floor Plan Created By V1photos.com, Measurements Deamed Highly Reliable But Not Guaranteed.



Disclaimer: Sizes and Dimensions are Approximate, Actual May Vary.

Terry Moss
720-651-1734
tmoss@wedgewoodhomes.com



Scan code
for more
property
details