

TOTAL: 1421 sq. ft
BELOW GROUND: 725 sq. ft, FLOOR 2: 696 sq. ft
EXCLUDED AREAS: GARAGE: 502 sq. ft, PATIO: 247 sq. ft, DECK: 65 sq. ft,
PORCH: 107 sq. ft

Floor Plan Created By V1photos.com, Measurements Deamed Highly Reliable But Not Guaranteed.



Disclaimer: Sizes and Dimensions are Approximate, Actual May Vary.

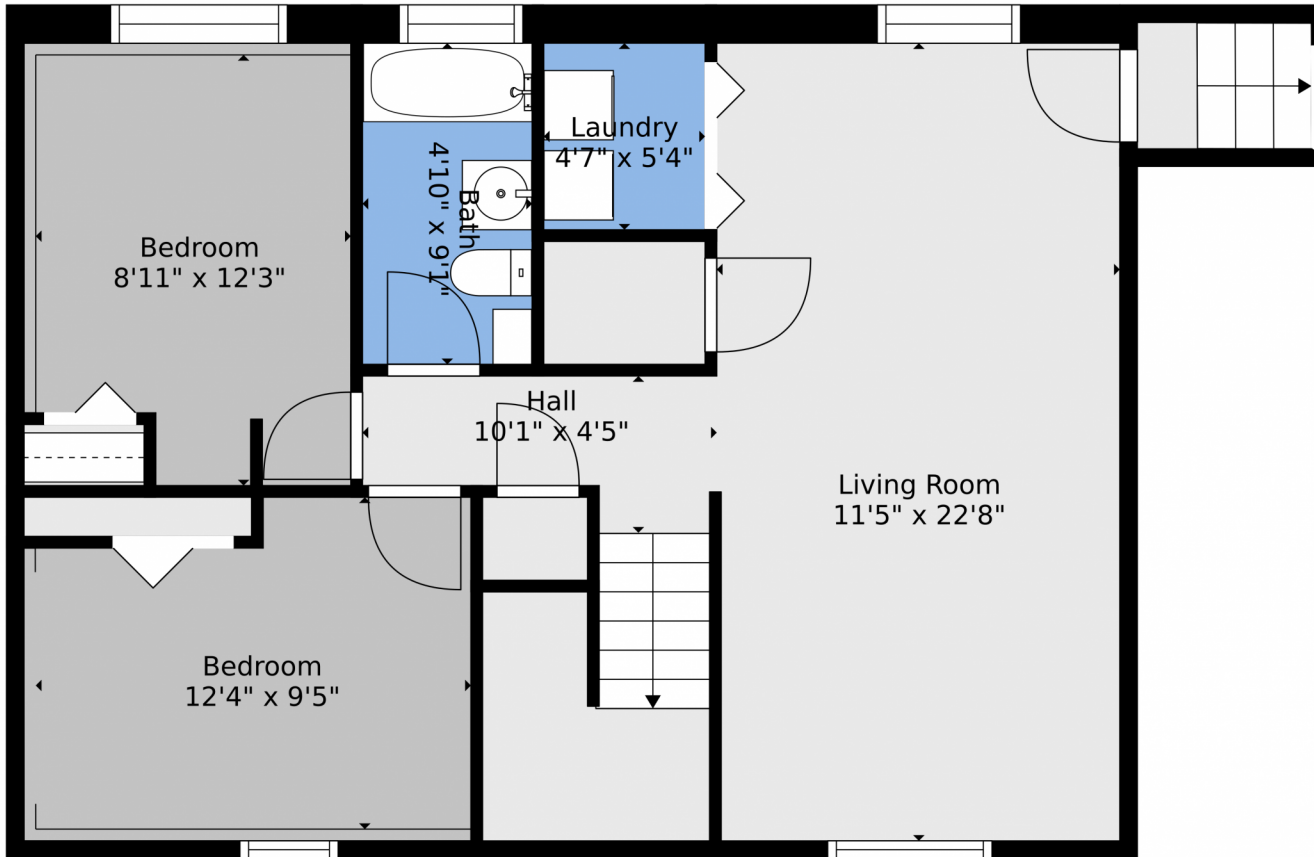


Brad Inhulsen
970-584-4144
brad@searsrealestate.com



Scan code
for more
property
details

706 6th Street, Kersey, CO 80644 – Lower Level



TOTAL: 1421 sq. ft
BELOW GROUND: 725 sq. ft, FLOOR 2: 696 sq. ft
EXCLUDED AREAS: GARAGE: 502 sq. ft, PATIO: 247 sq. ft, DECK: 65 sq. ft,
PORCH: 107 sq. ft

Floor Plan Created By V1photos.com, Measurements Deamed Highly Reliable But Not Guaranteed.



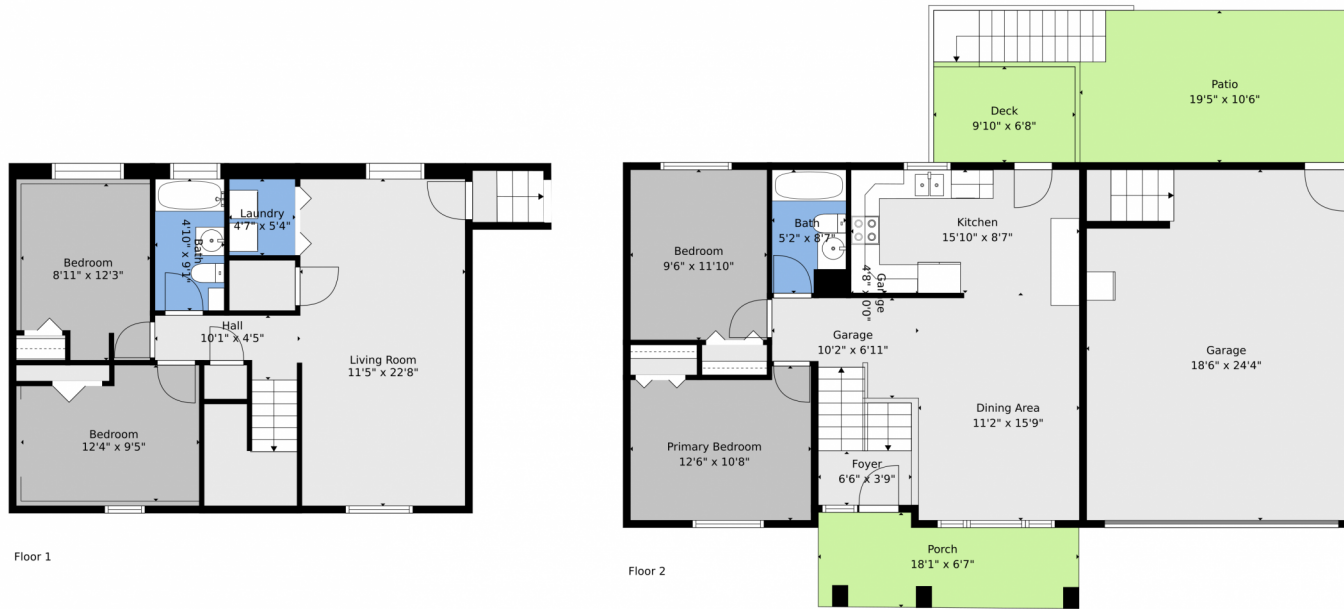
Disclaimer: Sizes and Dimensions are Approximate, Actual May Vary.



Brad Inhulsen
970-584-4144
brad@searsrealestate.com



706 6th Street, Kersey, CO 80644 – All Levels



Floor 1

Floor 2



TOTAL: 1421 sq. ft
BELOW GROUND: 725 sq. ft, FLOOR 2: 696 sq. ft
EXCLUDED AREAS: GARAGE: 502 sq. ft, PATIO: 247 sq. ft, DECK: 65 sq. ft,
PORCH: 107 sq. ft

Floor Plan Created By V1photos.com, Measurements Deamed Highly Reliable But Not Guaranteed.



Disclaimer: Sizes and Dimensions are Approximate, Actual May Vary.



Brad Inhulsen
970-584-4144
brad@searsrealestate.com



Scan code
for more
property
details