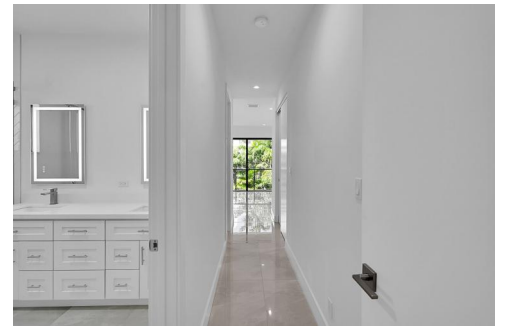




803 NE 16th Ter
Fort Lauderdale, FL 33304
COMMUNITY: Victoria Park

MLS
F10462688
PRICE
\$1,300,000



Townhouse



1200 SQFT



3 Beds



4 Baths



1 Car

PROPERTY DETAILS

This brand-new townhome in Victoria Park perfectly blends luxury and location. It features 3 spacious en-suite bedrooms upstairs, an office, and a full bathroom on the first floor. Enjoy two private balconies and a backyard oasis. With a 1-car garage and premium finishes, this home embodies modern living. Just minutes from Las Olas, Downtown, Flagler Village, the beach, and top shopping, it's a must-see for those seeking the ultimate Fort Lauderdale lifestyle. Don't miss your chance to make it your dream home!



Kenny Silverman

954-551-9099

kenny@silvermanfirst.com

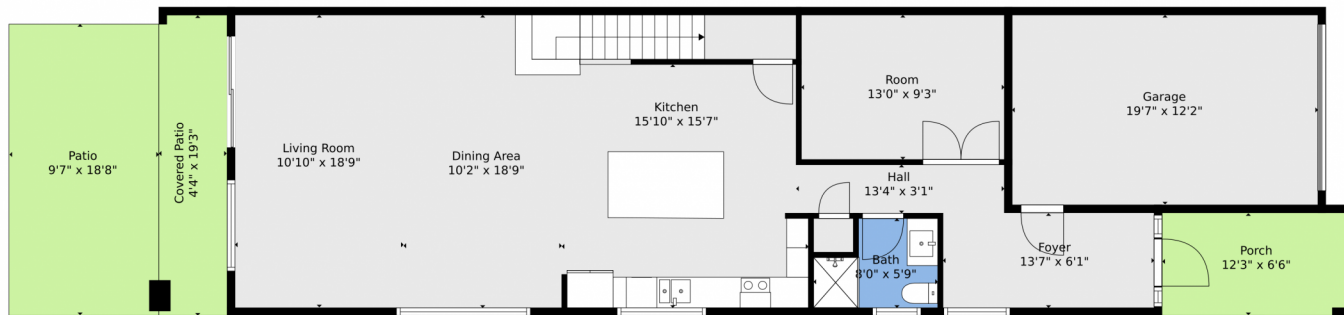
<https://www.silvermanfirst.com/>



Scan code
for more
property
details



803 NE 16th Ter, Fort Lauderdale, FL 33304 — Main



TOTAL: 2335 sq. ft
FLOOR 1: 986 sq. ft, FLOOR 2: 1349 sq. ft
EXCLUDED AREAS: GARAGE: 239 sq. ft, PORCH: 80 sq. ft, COVERED PATIO: 85 sq. ft,
PATIO: 180 sq. ft, BALCONY: 149 sq. ft

Floor Plan Created By V1photos.com, Measurements Deamed Highly Reliable But Not Guaranteed.



Disclaimer: Sizes and Dimensions are Approximate, Actual May Vary.



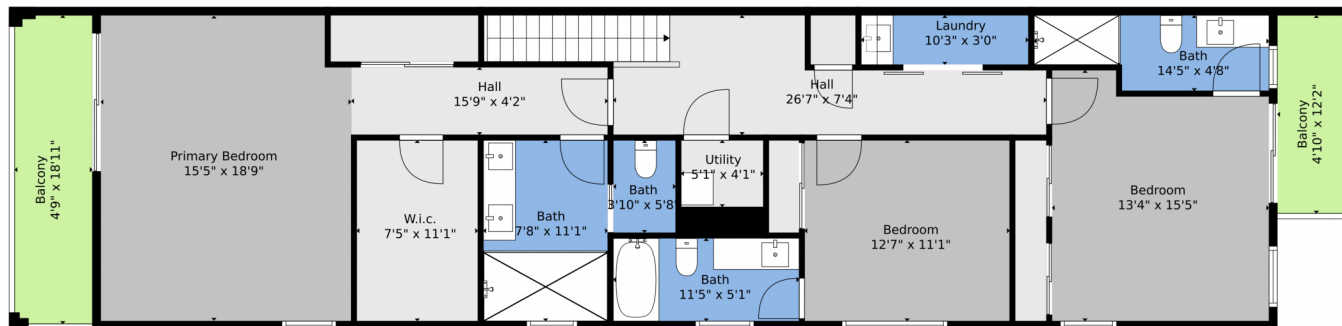
Kenny Silverman
954-551-9099
kenny@silvermanfirst.com
<https://www.silvermanfirst.com/>



Scan code
for more
property
details



803 NE 16th Ter, Fort Lauderdale, FL 33304 – 2nd Level



TOTAL: 2335 sq. ft
FLOOR 1: 986 sq. ft, FLOOR 2: 1349 sq. ft
EXCLUDED AREAS: GARAGE: 239 sq. ft, PORCH: 80 sq. ft, COVERED PATIO: 85 sq. ft,
PATIO: 180 sq. ft, BALCONY: 149 sq. ft

Floor Plan Created By V1photos.com, Measurements Deamed Highly Reliable But Not Guaranteed.



Disclaimer: Sizes and Dimensions are Approximate, Actual May Vary.



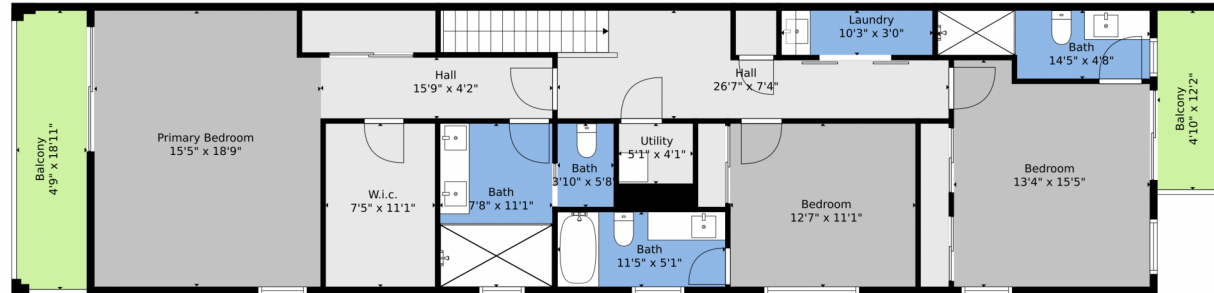
Kenny Silverman
954-551-9099
kenny@silvermanfirst.com
<https://www.silvermanfirst.com/>



Scan code
for more
property
details



803 NE 16th Ter, Fort Lauderdale, FL 33304 — All Levels



Floor 2



Floor 1



TOTAL: 2335 sq. ft
 FLOOR 1: 986 sq. ft, FLOOR 2: 1349 sq. ft
 EXCLUDED AREAS: GARAGE: 239 sq. ft, PORCH: 80 sq. ft, COVERED PATIO: 85 sq. ft,
 PATIO: 180 sq. ft, BALCONY: 149 sq. ft

Floor Plan Created By V1photos.com, Measurements Deamed Highly Reliable But Not Guaranteed.



Disclaimer: Sizes and Dimensions are Approximate, Actual May Vary.



Kenny Silverman
 954-551-9099
 kenny@silvermanfirst.com
<https://www.silvermanfirst.com/>



Scan code
 for more
 property
 details

