



4785 South Estes Street
Littleton, CO 80123

PRICE \$630,000



Single Family



2173 SQFT



4 Beds



2/1 Baths



2 Car



0.14 Acre

PROPERTY DETAILS

Charming 4-Bedroom Home in Littleton, Colorado – No HOA! This stunning home features 4 bedrooms and 3 bathrooms, with a freshly painted exterior and a new roof (2024). The open-concept layout offers natural light and space for entertaining. The primary suite includes an updated en-suite bathroom, also completed in 2024. An energy-efficient evaporative cooling system keeps the home comfortable year-round. The large backyard is perfect for gatherings, and a massive covered patio allows for outdoor enjoyment. Additional driveway space accommodates RV parking. Enjoy the freedom of no HOA and make this home your own in a sought-after Littleton neighborhood!



Michelle Cuscaden

303-250-3786

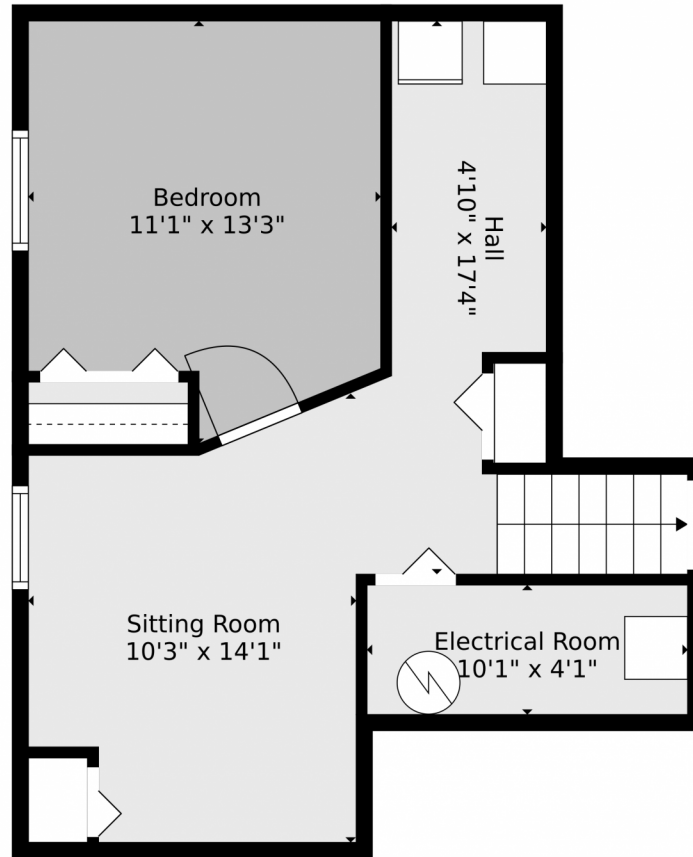
m.cuscaden30@gmail.com

<https://michellecuscaden.myrealtyonegroup.com/>



Scan code
for more
property
details





TOTAL: 1982 sq. ft
BELOW GROUND: 388 sq. ft, FLOOR 2: 409 sq. ft, FLOOR 3: 485 sq. ft, FLOOR 4: 700 sq. ft
EXCLUDED AREAS: ELECTRICAL ROOM: 41 sq. ft, GARAGE: 434 sq. ft, FIREPLACE: 9 sq. ft

Floor Plan Created By V1photos.com, Measurements Deamed Highly Reliable But Not Guaranteed.

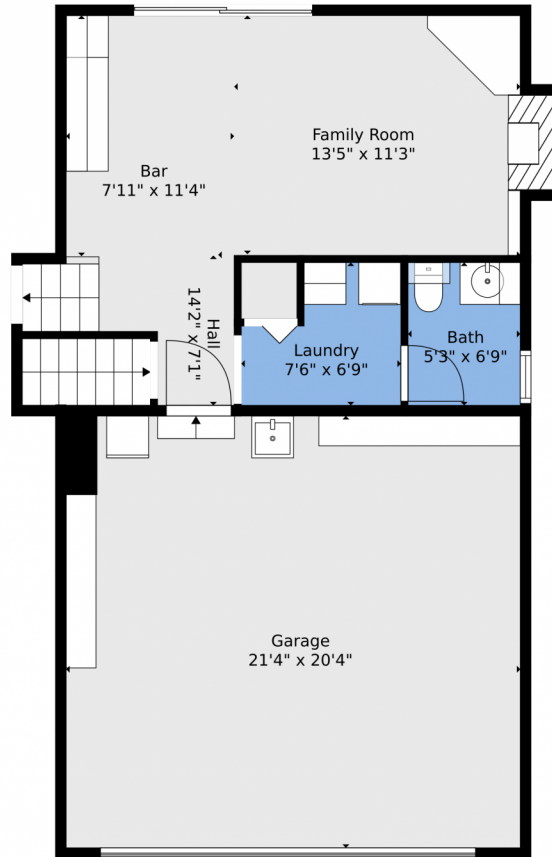


Disclaimer: Sizes and Dimensions are Approximate, Actual May Vary.



Michelle Cuscaden
303-250-3786
m.cuscaden30@gmail.com
<https://michellecuscaden.myrealtyonegroup.com/>





TOTAL: 1982 sq. ft
BELOW GROUND: 388 sq. ft, FLOOR 2: 409 sq. ft, FLOOR 3: 485 sq. ft, FLOOR 4: 700 sq. ft
EXCLUDED AREAS: ELECTRICAL ROOM: 41 sq. ft, GARAGE: 434 sq. ft, FIREPLACE: 9 sq. ft

Floor Plan Created By V1photos.com, Measurements Deamed Highly Reliable But Not Guaranteed.



Disclaimer: Sizes and Dimensions are Approximate, Actual May Vary.

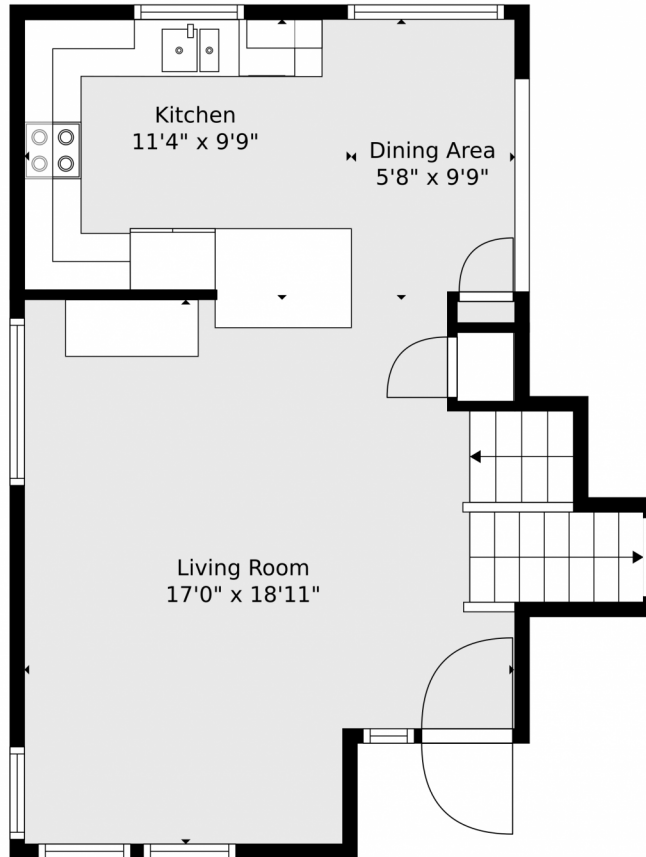


Michelle Cuscaden
303-250-3786
m.cuscaden30@gmail.com
<https://michellecuscaden.myrealtyonegroup.com/>



Scan code
for more
property
details





TOTAL: 1982 sq. ft
BELOW GROUND: 388 sq. ft, FLOOR 2: 409 sq. ft, FLOOR 3: 485 sq. ft, FLOOR 4: 700 sq. ft
EXCLUDED AREAS: ELECTRICAL ROOM: 41 sq. ft, GARAGE: 434 sq. ft, FIREPLACE: 9 sq. ft

Floor Plan Created By V1photos.com. Measurements Deamed Highly Reliable But Not Guaranteed.

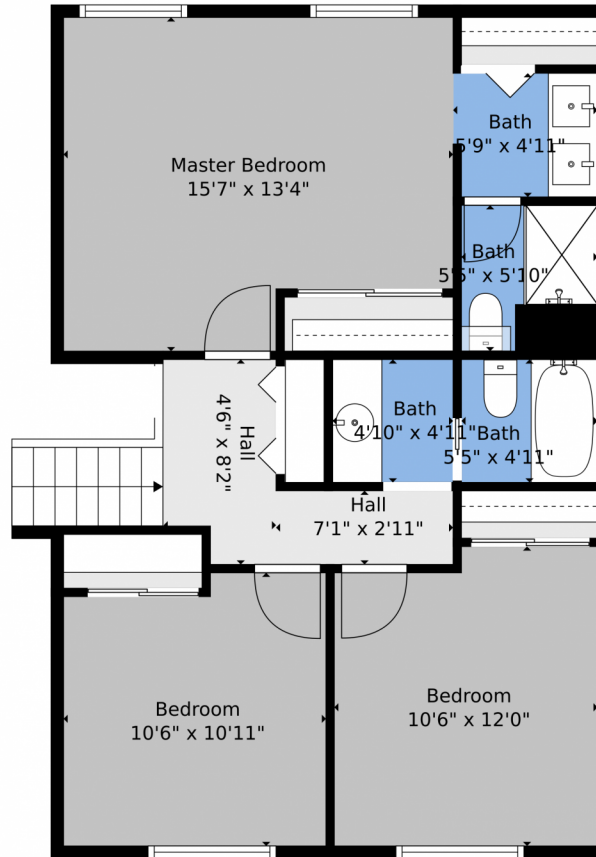


Disclaimer: Sizes and Dimensions are Approximate, Actual May Vary.



Michelle Cuscaden
303-250-3786
m.cuscaden30@gmail.com
<https://michellecuscaden.myrealtyonegroup.com/>





TOTAL: 1982 sq. ft
BELOW GROUND: 388 sq. ft, FLOOR 2: 409 sq. ft, FLOOR 3: 485 sq. ft, FLOOR 4: 700 sq. ft
EXCLUDED AREAS: ELECTRICAL ROOM: 41 sq. ft, GARAGE: 434 sq. ft, FIREPLACE: 9 sq. ft

Floor Plan Created By V1photos.com, Measurements Deamed Highly Reliable But Not Guaranteed.

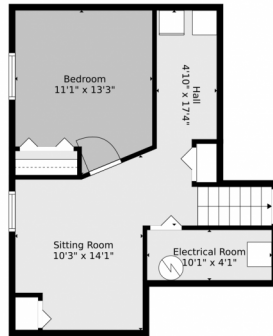


Disclaimer: Sizes and Dimensions are Approximate, Actual May Vary.

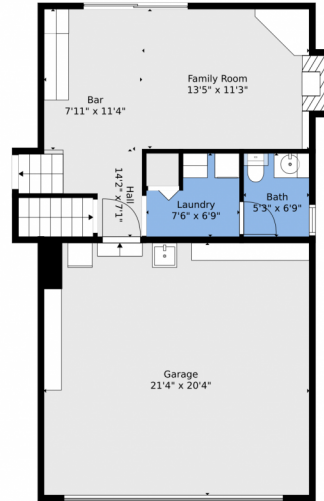


Michelle Cuscaden
303-250-3786
m.cuscaden30@gmail.com
<https://michellecuscaden.myrealtyonegroup.com/>

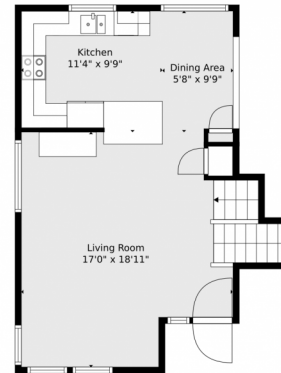




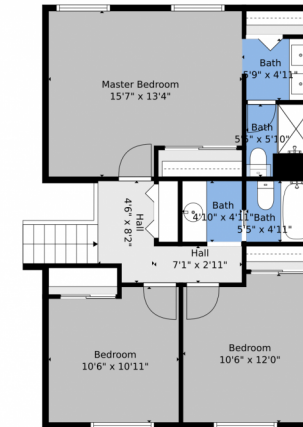
Floor 1



Floor 2



Floor 3



Floor 4

TOTAL: 1982 sq. ft
BELOW GROUND: 388 sq. ft, FLOOR 2: 409 sq. ft, FLOOR 3: 485 sq. ft, FLOOR 4: 700 sq. ft
EXCLUDED AREAS: ELECTRICAL ROOM: 41 sq. ft, GARAGE: 434 sq. ft, FIREPLACE: 9 sq. ft

Floor Plan Created By V1photos.com, Measurements Deamed Highly Reliable But Not Guaranteed.



Disclaimer: Sizes and Dimensions are Approximate, Actual May Vary.



Michelle Cuscaden
303-250-3786
m.cuscaden30@gmail.com
<https://michellecuscaden.myrealtyonegroup.com/>



Scan code
for more
property
details

