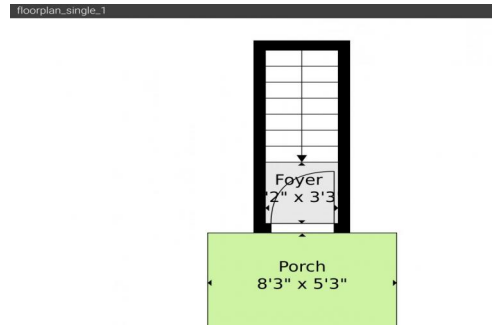




1066 South Street  
Castle Rock, CO 80104



Condominium



784 SQFT



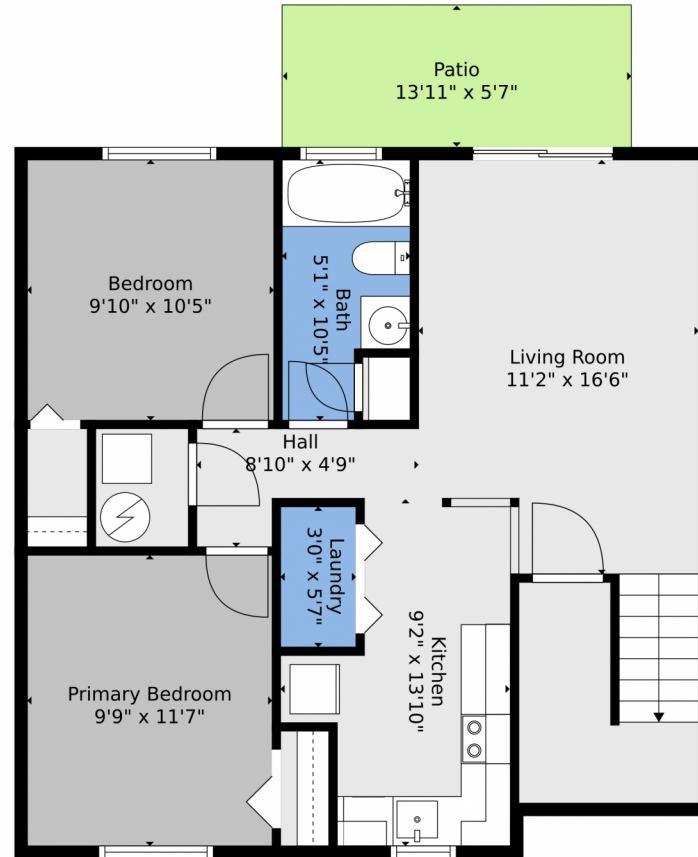
**Jennifer Oceguela**  
303-917-7120  
jennifer@jrmgmtco.com



Scan code  
for more  
property  
details



1066 South Street, Castle Rock, CO 80104 – Main Level



**TOTAL: 751 sq. ft**  
BELOW GROUND: 722 sq. ft, FLOOR 2: 29 sq. ft  
EXCLUDED AREAS: PATIO: 79 sq. ft, PORCH: 43 sq. ft

Floor Plan Created By V1photos.com, Measurements Deamed Highly Reliable But Not Guaranteed.



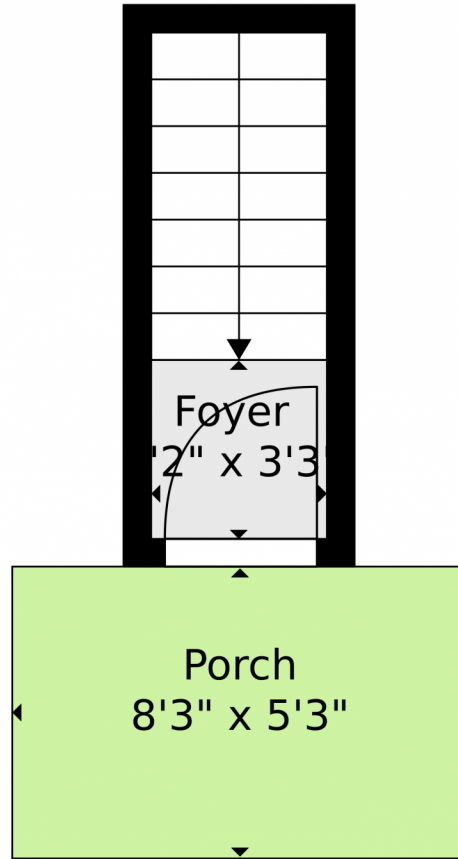
Disclaimer: Sizes and Dimensions are Approximate, Actual May Vary.



Jennifer Oceguela  
303-917-7120  
jennifer@jrmgmtco.com



Scan code  
for more  
property  
details



**TOTAL: 751 sq. ft**  
BELOW GROUND: 722 sq. ft, FLOOR 2: 29 sq. ft  
EXCLUDED AREAS: PATIO: 79 sq. ft, PORCH: 43 sq. ft

Floor Plan Created By V1photos.com. Measurements Deamed Highly Reliable But Not Guaranteed.



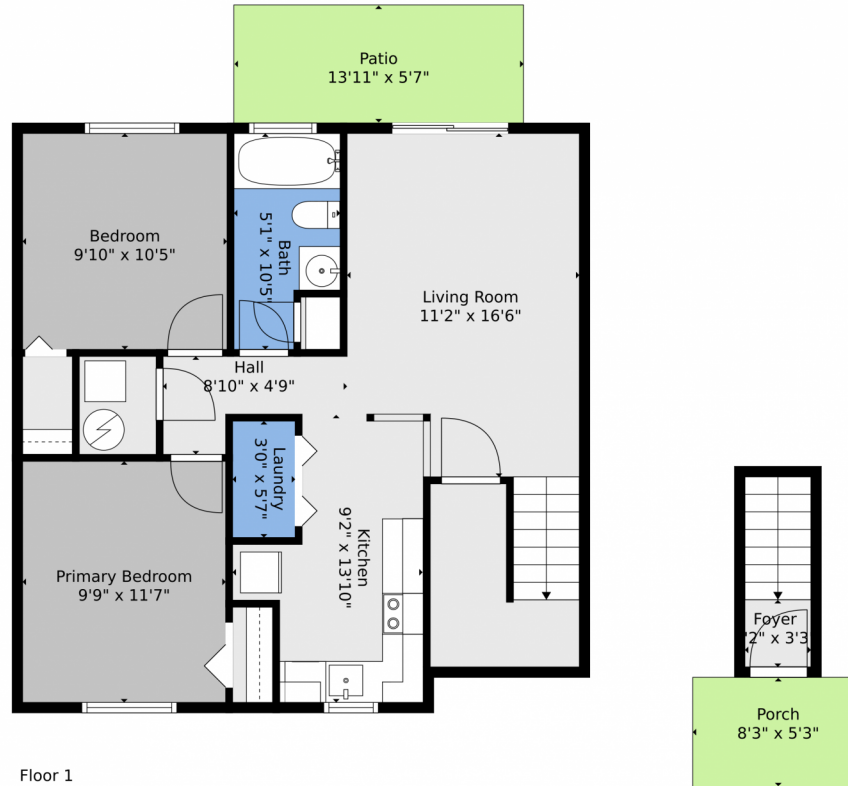
Disclaimer: Sizes and Dimensions are Approximate, Actual May Vary.



**Jennifer Oceguela**  
303-917-7120  
jennifer@jrmgmtco.com



# 1066 South Street, Castle Rock, CO 80104 – All Levels



Floor 1

Floor 2



**TOTAL: 751 sq. ft**  
BELOW GROUND: 722 sq. ft, FLOOR 2: 29 sq. ft  
EXCLUDED AREAS: PATIO: 79 sq. ft, PORCH: 43 sq. ft

Floor Plan Created By V1photos.com, Measurements Deamed Highly Reliable But Not Guaranteed.



Disclaimer: Sizes and Dimensions are Approximate, Actual May Vary.



Jennifer Ocegura  
303-917-7120  
jennifer@jrmgmtco.com



Scan code  
for more  
property  
details