



11834 Claude Way  
Northglenn, CO 80233  
COMMUNITY: Northglenn

PRICE \$425,000



floorplan\_all\_0



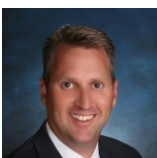
Single Family

2050 SQFT

4 Beds

2 Baths

0.19 Acre

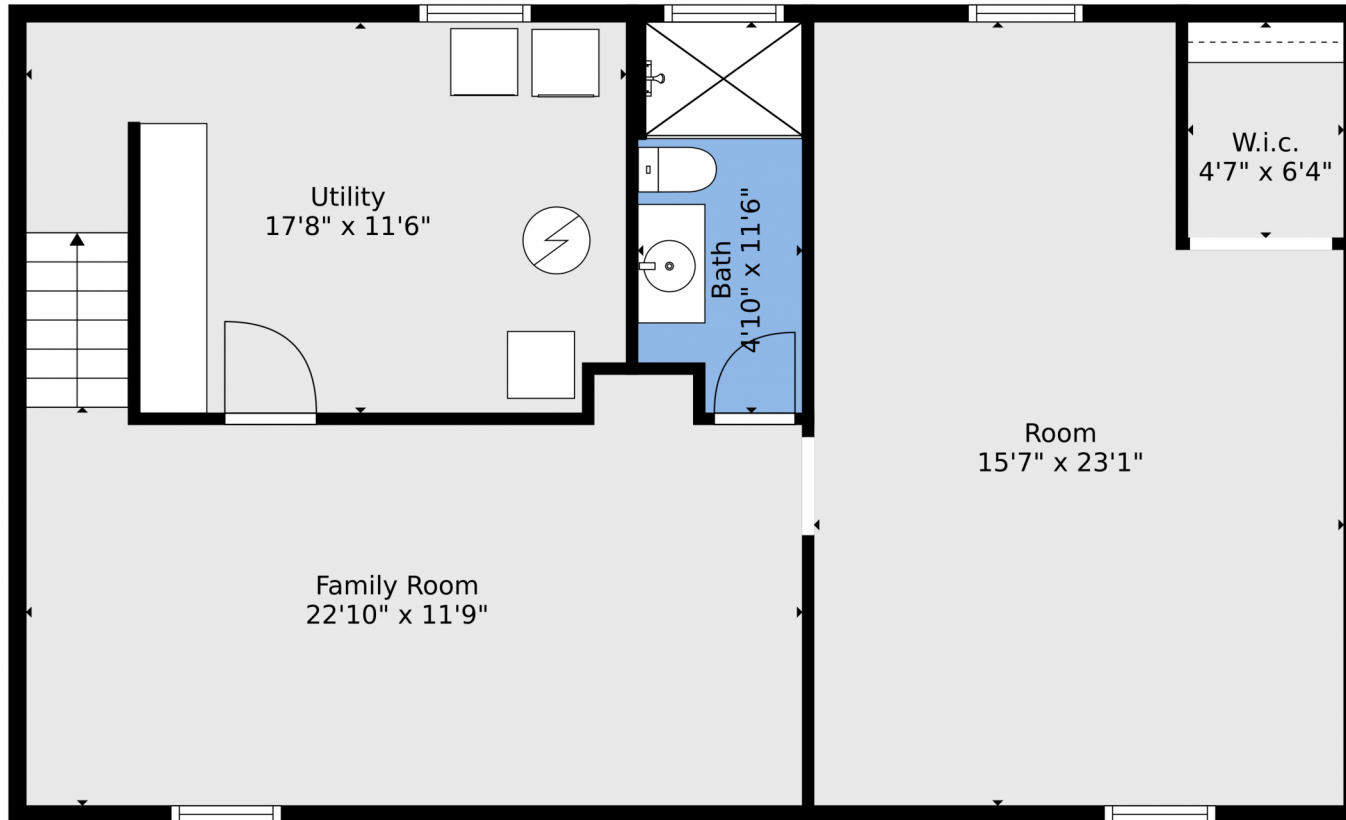


**Greg Dach**  
303-525-9006  
gregdach@remax.net



Scan code  
for more  
property  
details





**TOTAL: 1607 sq. ft**  
BELOW GROUND: 712 sq. ft, FLOOR 2: 895 sq. ft  
EXCLUDED AREAS: UTILITY: 184 sq. ft

Floor Plan Created By V1photos.com. Measurements Deamed Highly Reliable But Not Guaranteed.

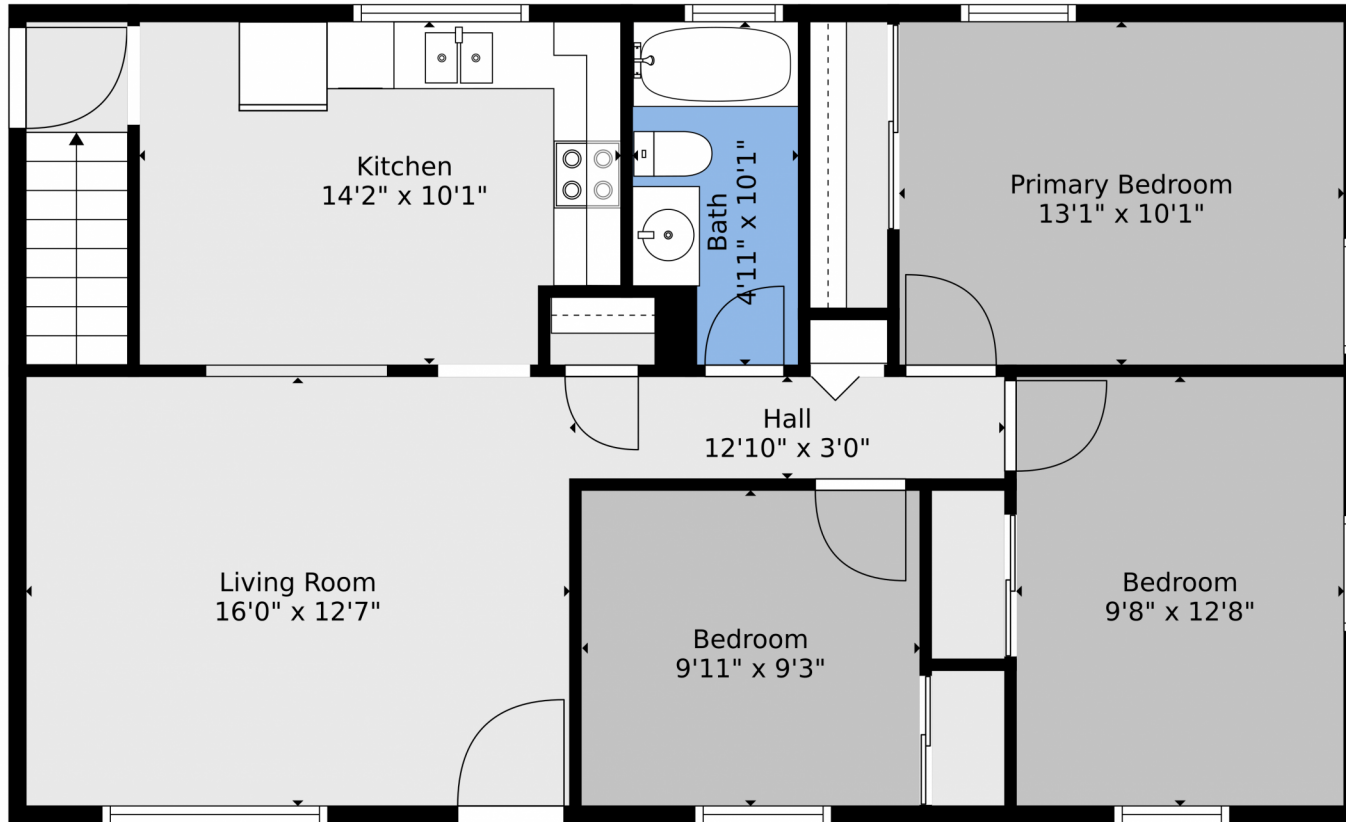


Disclaimer: Sizes and Dimensions are Approximate, Actual May Vary.



**Greg Dach**  
303-525-9006  
gregdach@remax.net



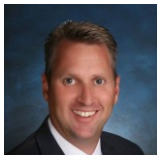


**TOTAL: 1607 sq. ft**  
BELOW GROUND: 712 sq. ft, FLOOR 2: 895 sq. ft  
EXCLUDED AREAS: UTILITY: 184 sq. ft

Floor Plan Created By V1photos.com. Measurements Deamed Highly Reliable But Not Guaranteed.



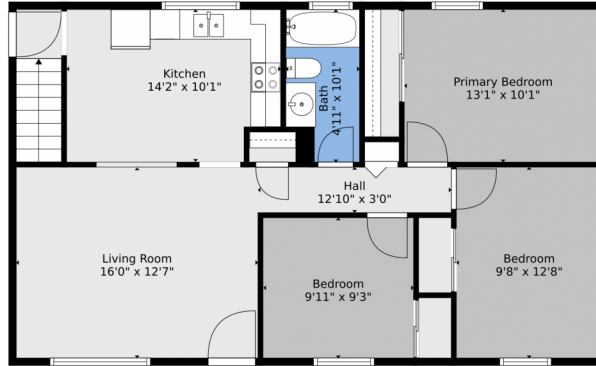
Disclaimer: Sizes and Dimensions are Approximate, Actual May Vary.



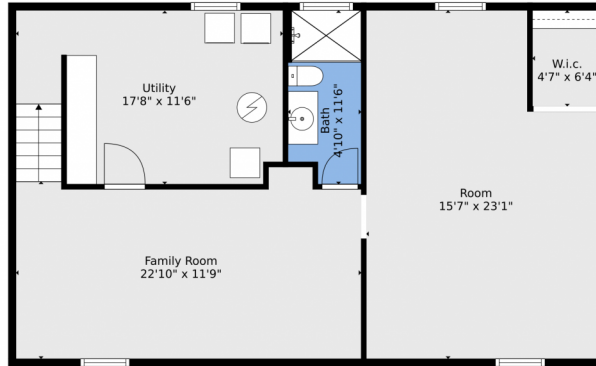
**Greg Dach**  
303-525-9006  
gregdach@remax.net



Scan code  
for more  
property  
details



Floor 2



Floor 1

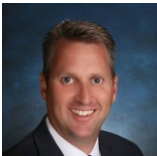


**TOTAL: 1607 sq. ft**  
BELOW GROUND: 712 sq. ft, FLOOR 2: 895 sq. ft  
EXCLUDED AREAS: UTILITY: 184 sq. ft

Floor Plan Created By V1photos.com, Measurements Deamed Highly Reliable But Not Guaranteed.



Disclaimer: Sizes and Dimensions are Approximate, Actual May Vary.



**Greg Dach**  
303-525-9006  
gregdach@remax.net

