




 Single Family  2293 SQFT  5 Beds  3 Baths  2 Car  0.28 Acre

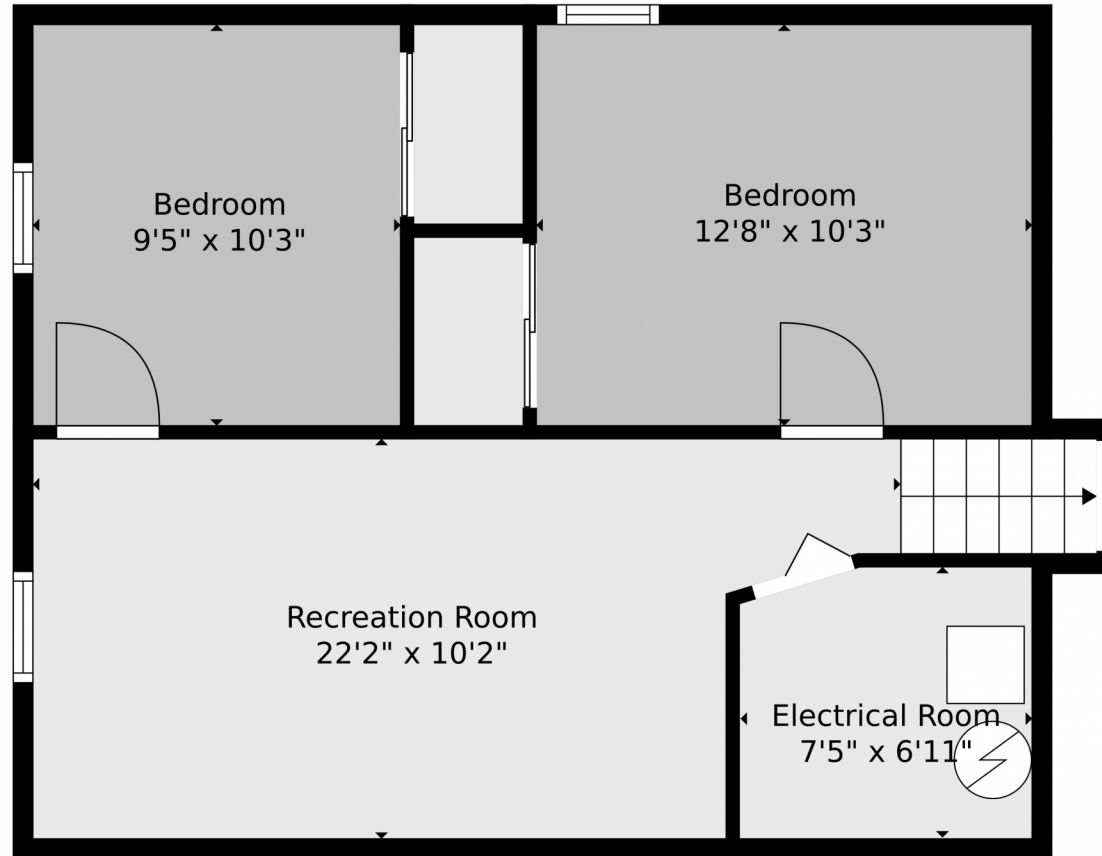
PROPERTY DETAILS

Discover luxury and comfort in this stunning tri-level home with five bedrooms and three bathrooms. The gourmet kitchen features a spacious 5x9 island, perfect for cooking and entertaining. Elegant design elements include luxury vinyl plank floors and chic gold finishes. The cozy family room, complete with a wood-burning fireplace, adds warmth. Outside, enjoy a 2-car garage, a 4-car driveway, a private dog area, and a serene backyard with apple and grape trees. This home beautifully combines contemporary living with thoughtful details for an ideal living experience.



Kifle Leulseged
720-891-6979
kleulseged@gmail.com





TOTAL: 2031 sq. ft
BELOW GROUND: 485 sq. ft, FLOOR 2: 381 sq. ft, FLOOR 3: 569 sq. ft, FLOOR 4: 596 sq. ft
EXCLUDED AREAS: ELECTRICAL ROOM: 50 sq. ft, GARAGE: 369 sq. ft, PATIO: 261 sq. ft,
FIREPLACE: 14 sq. ft, PORCH: 37 sq. ft

Floor Plan Created By V1photos.com. Measurements Deamed Highly Reliable But Not Guaranteed.



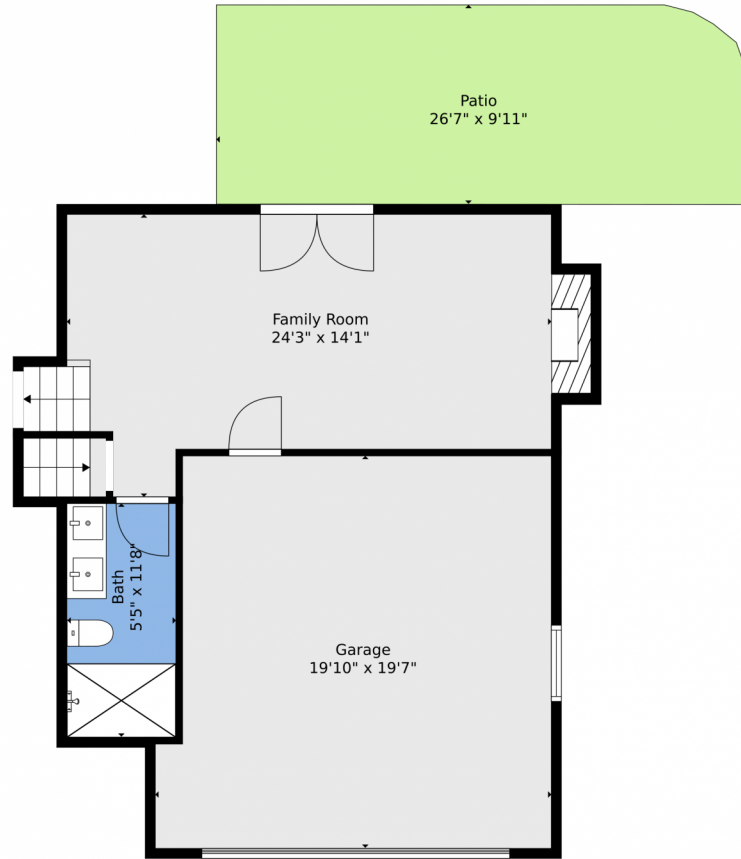
Disclaimer: Sizes and Dimensions are Approximate, Actual May Vary.



Kifle Leulseged
720-891-6979
kleulseged@gmail.com



2197 S Dover Way, Lakewood, CO 80227 – Lower Level



TOTAL: 2031 sq. ft
BELOW GROUND: 485 sq. ft, FLOOR 2: 381 sq. ft, FLOOR 3: 569 sq. ft, FLOOR 4: 596 sq. ft
EXCLUDED AREAS: ELECTRICAL ROOM: 50 sq. ft, GARAGE: 369 sq. ft, PATIO: 261 sq. ft,
FIREPLACE: 14 sq. ft, PORCH: 37 sq. ft

Floor Plan Created By V1photos.com, Measurements Deamed Highly Reliable But Not Guaranteed.

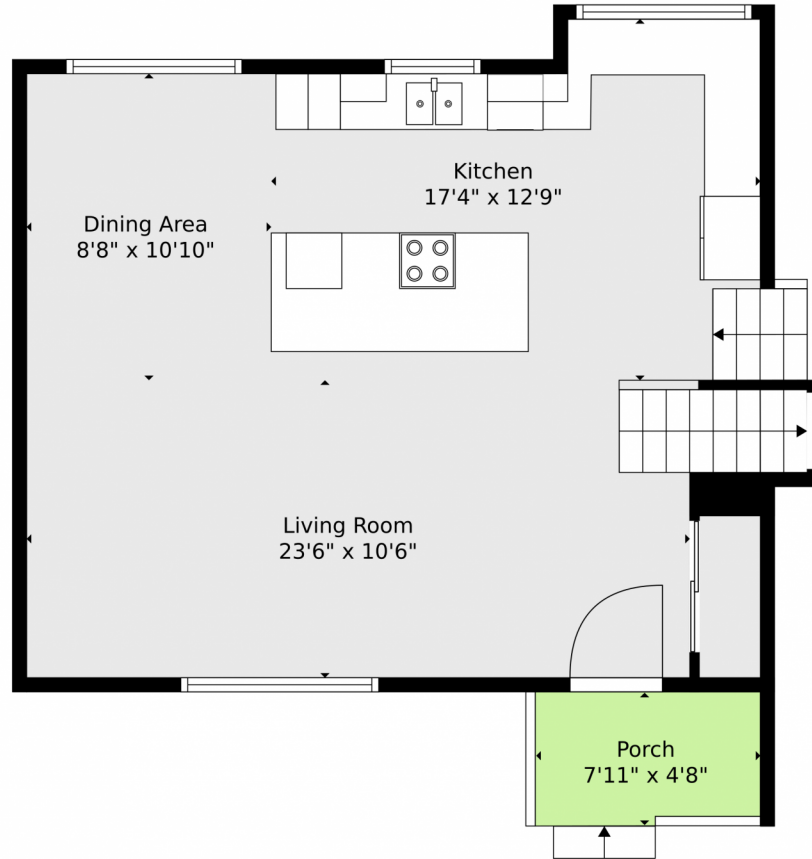
Disclaimer: Sizes and Dimensions are Approximate, Actual May Vary.



Kifle Leulseged
720-891-6979
kleulseged@gmail.com



Scan code
for more
property
details



TOTAL: 2031 sq. ft
BELOW GROUND: 485 sq. ft, FLOOR 2: 381 sq. ft, FLOOR 3: 569 sq. ft, FLOOR 4: 596 sq. ft
EXCLUDED AREAS: ELECTRICAL ROOM: 50 sq. ft, GARAGE: 369 sq. ft, PATIO: 261 sq. ft,
FIREPLACE: 14 sq. ft, PORCH: 37 sq. ft

Floor Plan Created By V1photos.com, Measurements Deamed Highly Reliable But Not Guaranteed.



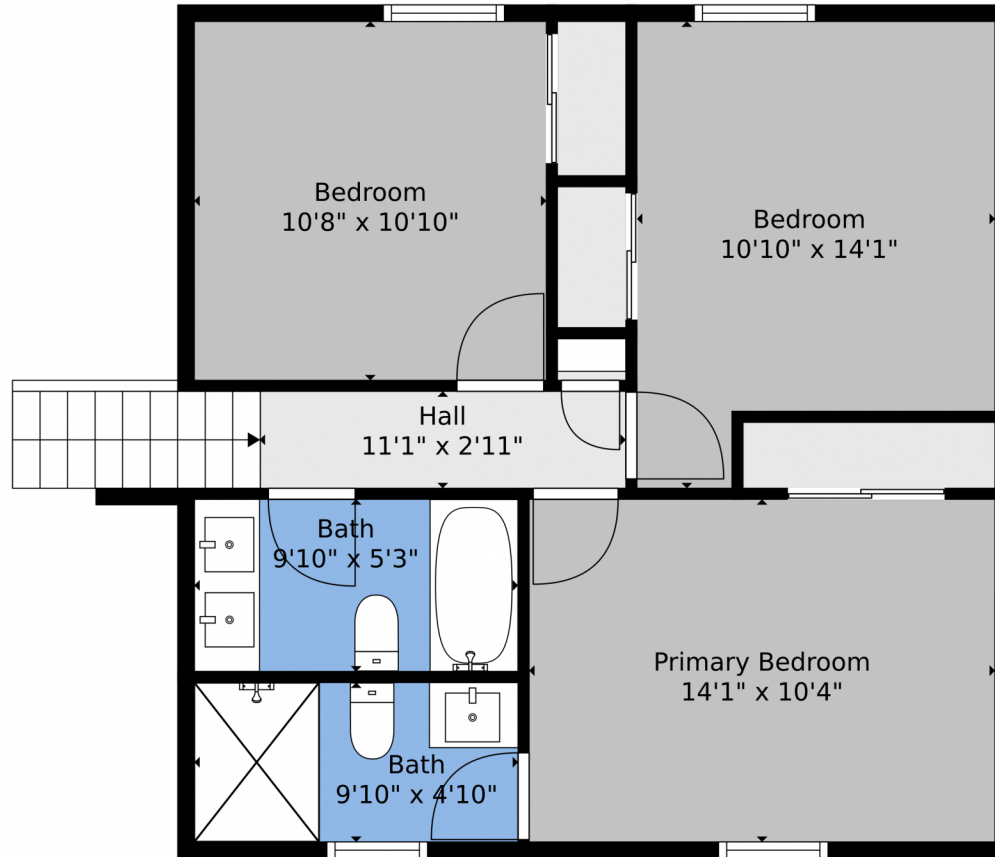
Disclaimer: Sizes and Dimensions are Approximate, Actual May Vary.



Kifle Leulseged
720-891-6979
kleulseged@gmail.com



2197 S Dover Way, Lakewood, CO 80227 – 2nd Level



TOTAL: 2031 sq. ft
BELOW GROUND: 485 sq. ft, FLOOR 2: 381 sq. ft, FLOOR 3: 569 sq. ft, FLOOR 4: 596 sq. ft
EXCLUDED AREAS: ELECTRICAL ROOM: 50 sq. ft, GARAGE: 369 sq. ft, PATIO: 261 sq. ft,
FIREPLACE: 14 sq. ft, PORCH: 37 sq. ft

Floor Plan Created By V1photos.com, Measurements Deamed Highly Reliable But Not Guaranteed.



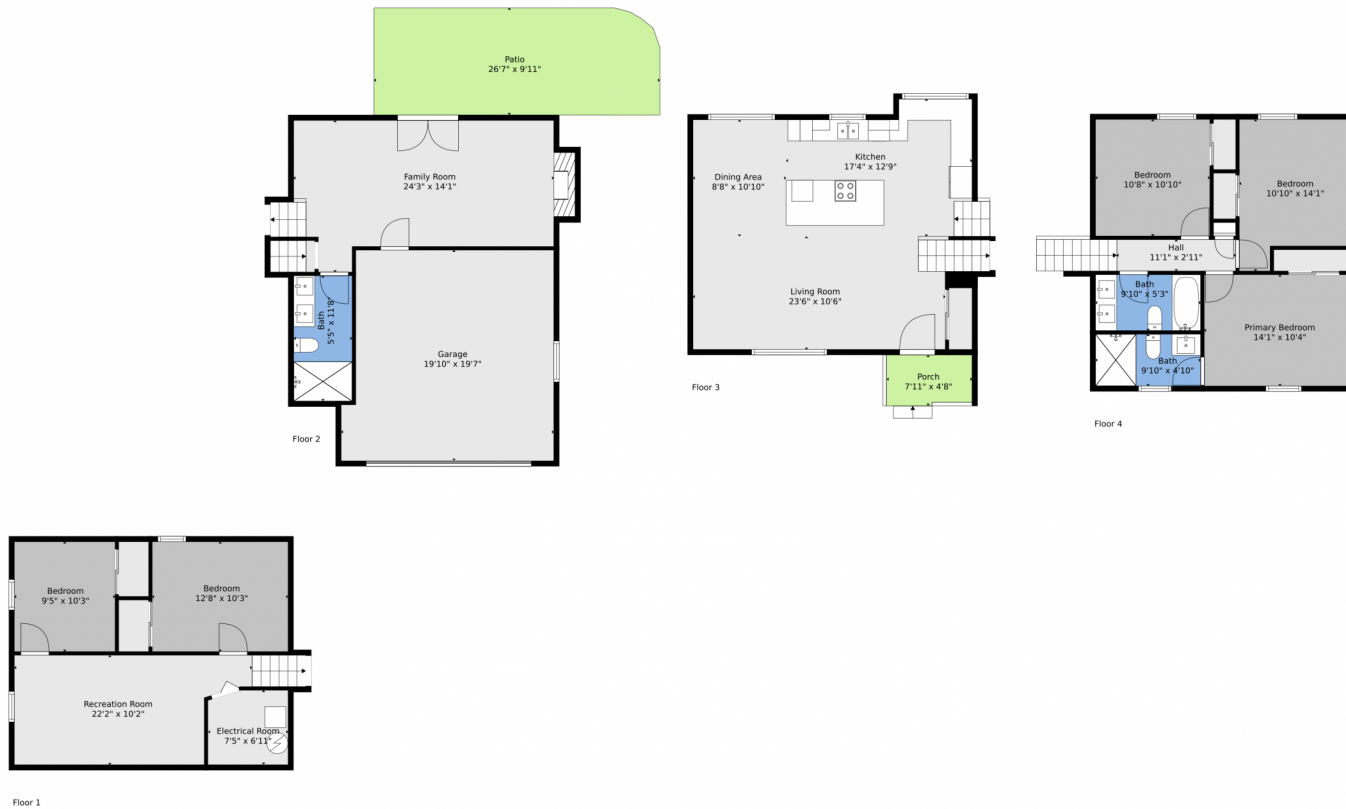
Disclaimer: Sizes and Dimensions are Approximate, Actual May Vary.



Kifle Leulseged
720-891-6979
kleulseged@gmail.com



2197 S Dover Way, Lakewood, CO 80227 – All Levels



Floor 1

Floor 2

Floor 3

Floor 4



TOTAL: 2031 sq. ft
 BELOW GROUND: 485 sq. ft, FLOOR 2: 381 sq. ft, FLOOR 3: 569 sq. ft, FLOOR 4: 596 sq. ft
 EXCLUDED AREAS: ELECTRICAL ROOM: 50 sq. ft, GARAGE: 369 sq. ft, PATIO: 261 sq. ft,
 FIREPLACE: 14 sq. ft, PORCH: 37 sq. ft

Floor Plan Created By V1photos.com. Measurements Deamed Highly Reliable But Not Guaranteed.



Disclaimer: Sizes and Dimensions are Approximate, Actual May Vary.



Kifle Leulseged
 720-891-6979
 kleulseged@gmail.com

