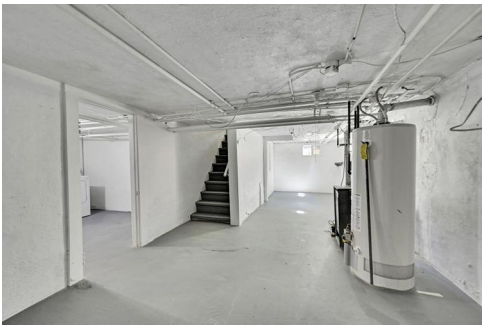





1110 Jackson Street
Denver, CO 80206

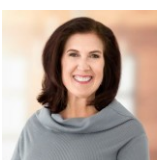


 Single Family

 1053 SQFT

 2 Beds

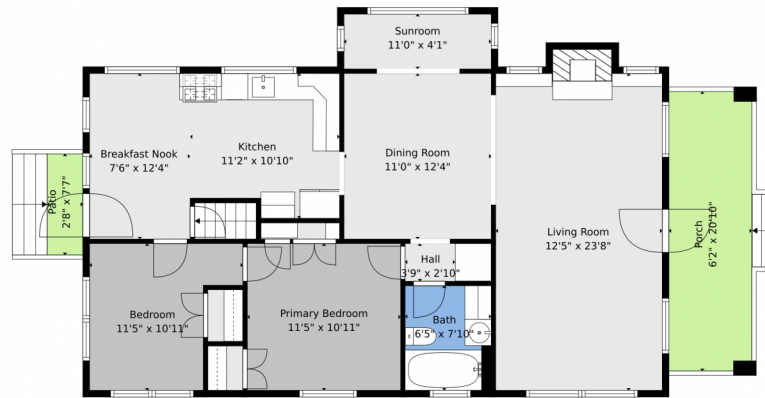
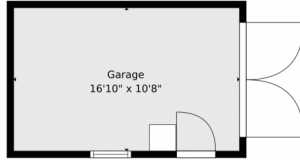
 1 Baths



Phoebe Nason
303-725-2564
phoebenason@remax.net



Scan code
for more
property
details

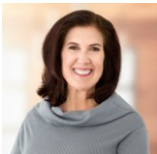


TOTAL: 1389 sq. ft
BELOW GROUND: 326 sq. ft, FLOOR 2: 1063 sq. ft
EXCLUDED AREAS: BASEMENT: 287 sq. ft, GARAGE: 180 sq. ft, PORCH: 129 sq. ft,
PATIO: 20 sq. ft, FIREPLACE: 10 sq. ft

Floor Plan Created By V1photos.com, Measurements Deamed Highly Reliable But Not Guaranteed.



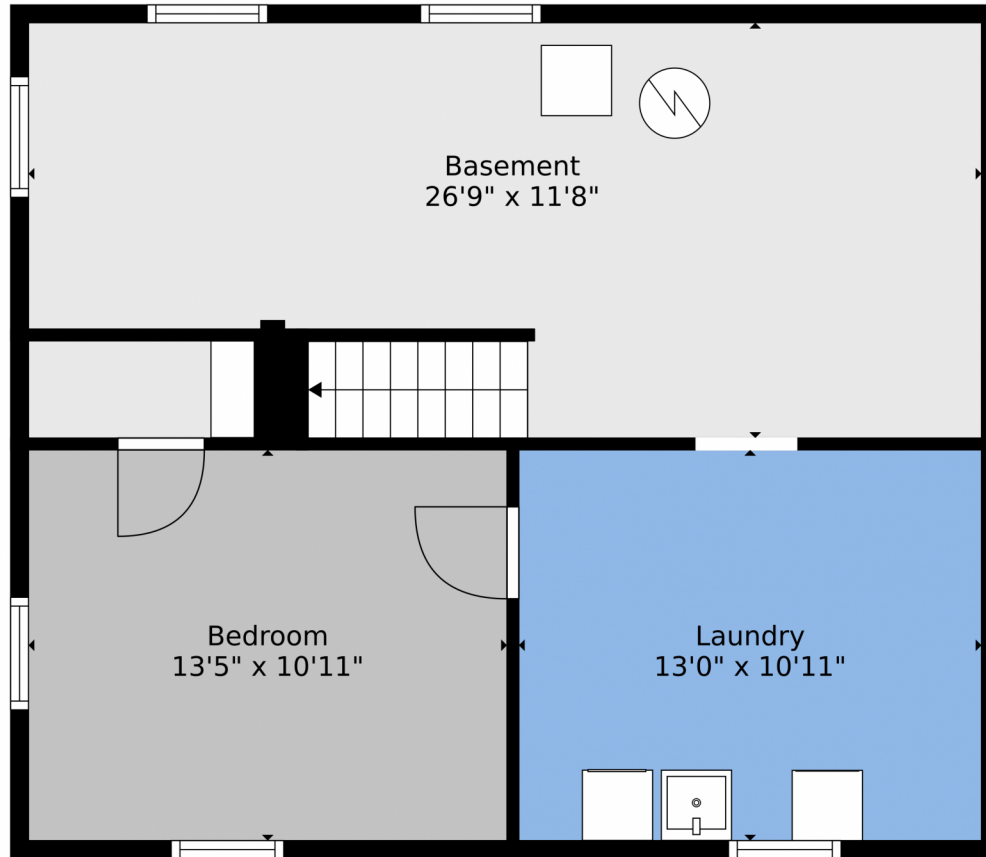
Disclaimer: Sizes and Dimensions are Approximate, Actual May Vary.



Phoebe Nason
303-725-2564
phoebenason@remax.net



Scan code
for more
property
details

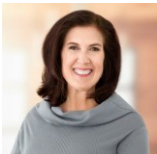


TOTAL: 1389 sq. ft
BELOW GROUND: 326 sq. ft, FLOOR 2: 1063 sq. ft
EXCLUDED AREAS: BASEMENT: 287 sq. ft, GARAGE: 180 sq. ft, PORCH: 129 sq. ft,
PATIO: 20 sq. ft, FIREPLACE: 10 sq. ft

Floor Plan Created By V1photos.com, Measurements Deamed Highly Reliable But Not Guaranteed.



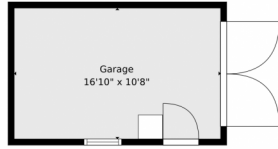
Disclaimer: Sizes and Dimensions are Approximate, Actual May Vary.



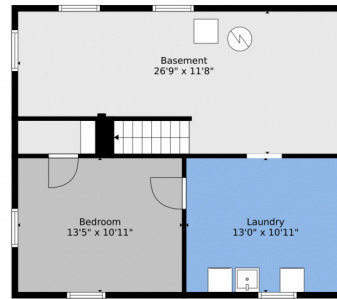
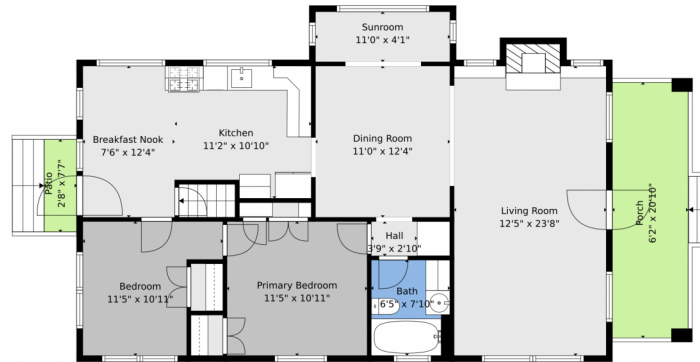
Phoebe Nason
303-725-2564
phoebenason@remax.net



1110 Jackson Street, Denver, CO 80206 – All Levels



Floor 2



Floor 1

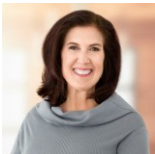


TOTAL: 1389 sq. ft
BELOW GROUND: 326 sq. ft, FLOOR 2: 1063 sq. ft
EXCLUDED AREAS: BASEMENT: 287 sq. ft, GARAGE: 180 sq. ft, PORCH: 129 sq. ft,
PATIO: 20 sq. ft, FIREPLACE: 10 sq. ft

Floor Plan Created By V1photos.com, Measurements Deamed Highly Reliable But Not Guaranteed.



Disclaimer: Sizes and Dimensions are Approximate, Actual May Vary.



Phoebe Nason
303-725-2564
phoebenason@remax.net

