




 Single Family

 2280 SQFT

 4 Beds

 3 Baths



Taylor Haas
303-665-7368
taylorh@coloradorpm.com
<https://www.coloradorpm.com/available-rental-properties-denver>



2 South Hayman Avenue, Colorado Springs, CO 80910 – Basement



TOTAL: 1987 sq. ft
BELOW GROUND: 850 sq. ft, FLOOR 2: 1137 sq. ft
EXCLUDED AREAS: ELECTRICAL ROOM: 55 sq. ft, STORAGE: 28 sq. ft, PATIO: 52 sq. ft,
GARAGE: 312 sq. ft, COVERED PATIO: 155 sq. ft, PORCH: 12 sq. ft

Floor Plan Created By V1photos.com, Measurements Deamed Highly Reliable But Not Guaranteed.



Disclaimer: Sizes and Dimensions are Approximate, Actual May Vary.



Taylor Haas

303-665-7368

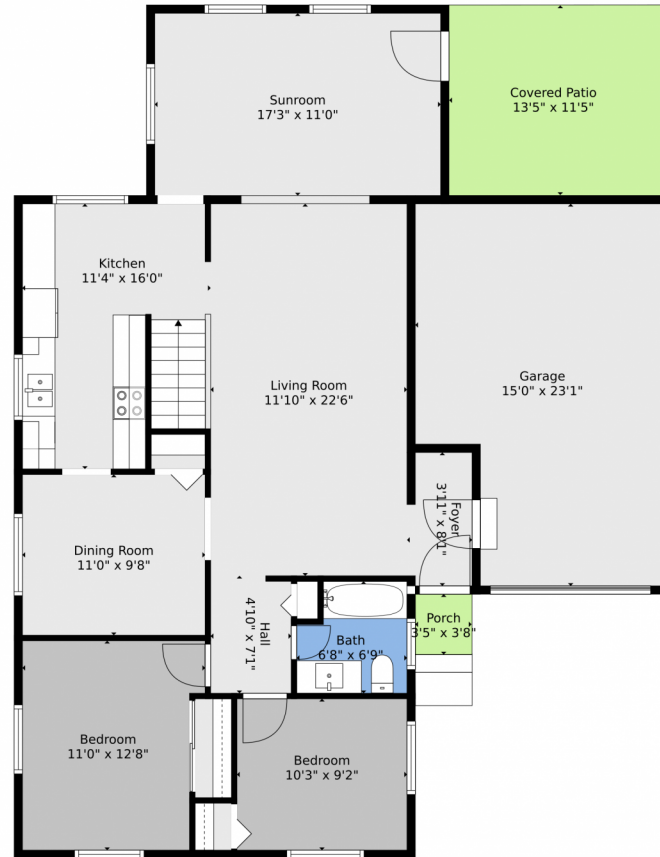
taylorh@coloradorm.com

<https://www.coloradorm.com/available-rental-properties-denver>



Scan code
for more
property
details





TOTAL: 1987 sq. ft
BELOW GROUND: 850 sq. ft, FLOOR 2: 1137 sq. ft
EXCLUDED AREAS: ELECTRICAL ROOM: 55 sq. ft, STORAGE: 28 sq. ft, PATIO: 52 sq. ft,
GARAGE: 312 sq. ft, COVERED PATIO: 155 sq. ft, PORCH: 12 sq. ft

Floor Plan Created By V1photos.com, Measurements Deamed Highly Reliable But Not Guaranteed.



Disclaimer: Sizes and Dimensions are Approximate, Actual May Vary.



Taylor Haas
303-665-7368
taylorh@coloradorpm.com
<https://www.coloradorpm.com/available-rental-properties-denver>



2 South Hayman Avenue, Colorado Springs, CO 80910 – All Levels



TOTAL: 1987 sq. ft
BELOW GROUND: 850 sq. ft, FLOOR 2: 1137 sq. ft
EXCLUDED AREAS: ELECTRICAL ROOM: 55 sq. ft, STORAGE: 28 sq. ft, PATIO: 52 sq. ft,
GARAGE: 312 sq. ft, COVERED PATIO: 155 sq. ft, PORCH: 12 sq. ft

Floor Plan Created By V1photos.com, Measurements Deamed Highly Reliable But Not Guaranteed.



Disclaimer: Sizes and Dimensions are Approximate, Actual May Vary.



Taylor Haas

303-665-7368

taylorh@coloradorpm.com

<https://www.coloradorpm.com/available-rental-properties-denver>



Scan code
for more
property
details

