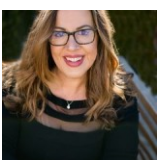
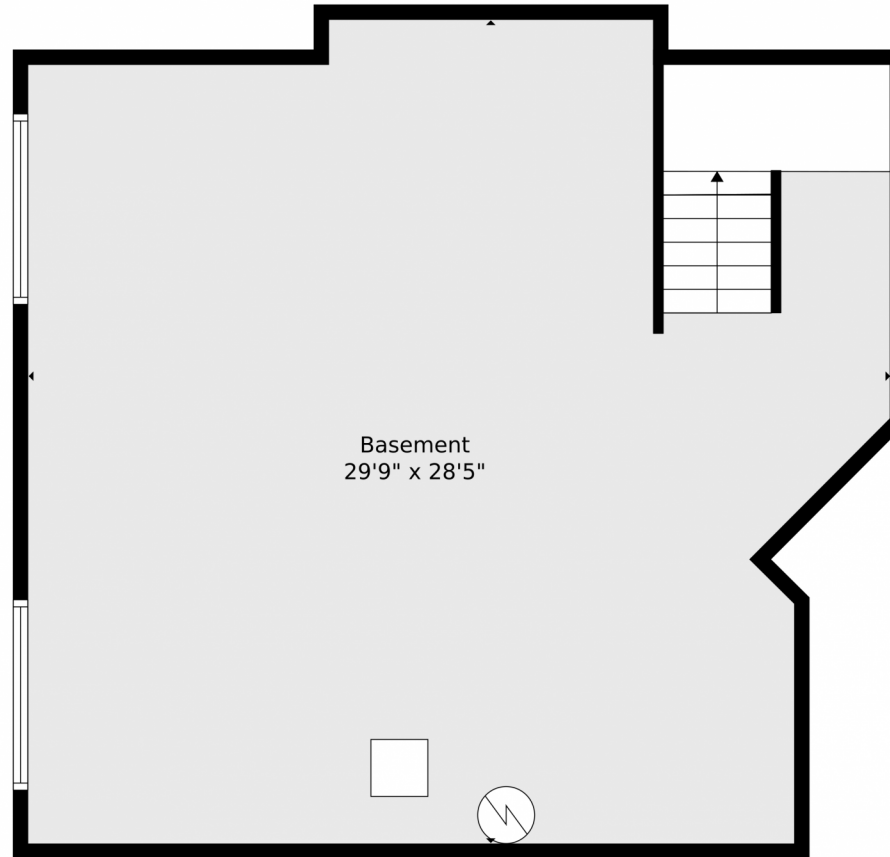


 Multi Family  2380 SQFT  3 Beds  3 Baths  2 Car  0.07 Acre



**Suzana Sweney**  
970-820-0222  
ssweney@kw.com





**TOTAL: 1465 sq. ft**  
BELOW GROUND: 0 sq. ft, FLOOR 2: 790 sq. ft, FLOOR 3: 675 sq. ft  
EXCLUDED AREAS: LOW CEILING: 776 sq. ft, GARAGE: 559 sq. ft, OPEN TO BELOW: 271 sq. ft

Floor Plan Created By V1photos.com, Measurements Deamed Highly Reliable But Not Guaranteed.

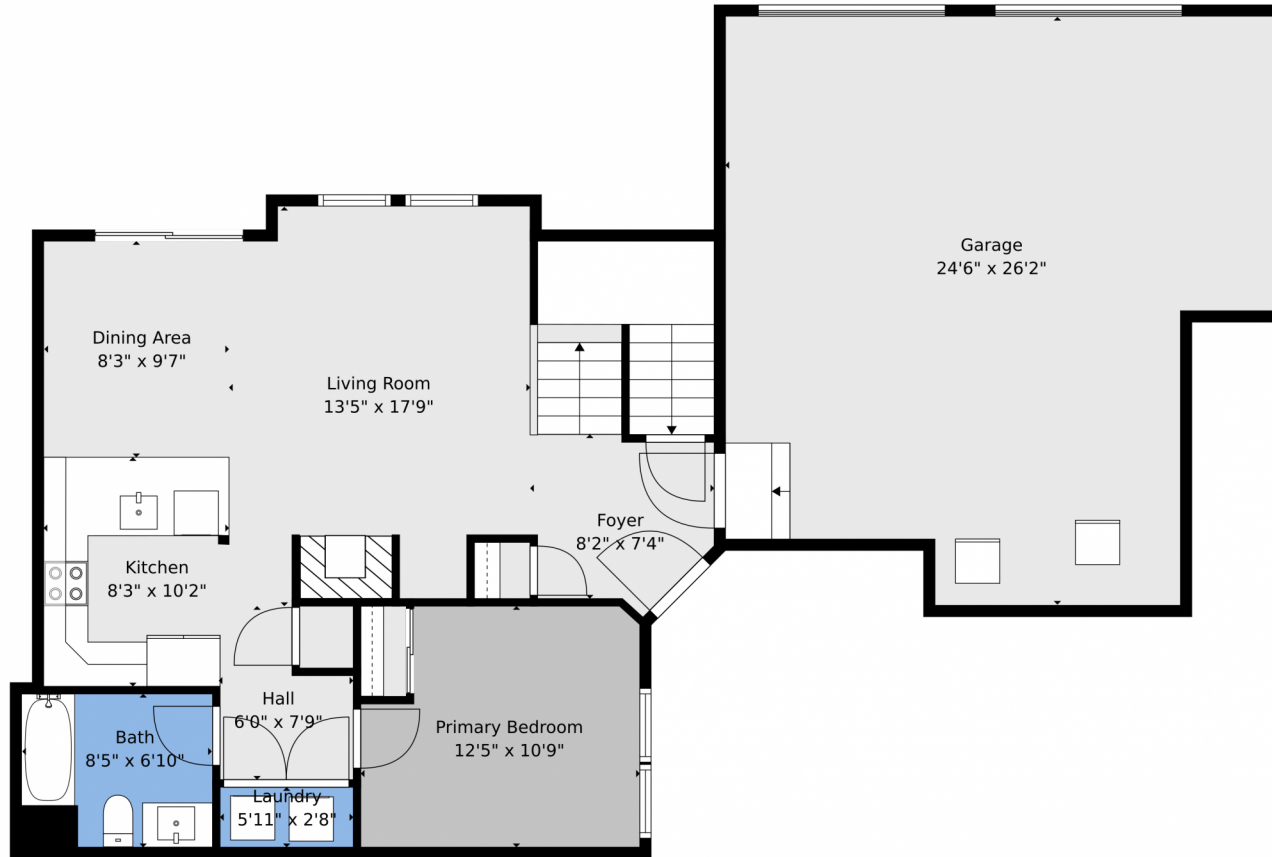


Disclaimer: Sizes and Dimensions are Approximate, Actual May Vary.



Suzana Sweney  
970-820-0222  
ssweney@kw.com





**TOTAL: 1465 sq. ft**  
BELOW GROUND: 0 sq. ft, FLOOR 2: 790 sq. ft, FLOOR 3: 675 sq. ft  
EXCLUDED AREAS: LOW CEILING: 776 sq. ft, GARAGE: 559 sq. ft, OPEN TO BELOW: 271 sq. ft  
Floor Plan Created By V1photos.com, Measurements Deamed Highly Reliable But Not Guaranteed.



Disclaimer: Sizes and Dimensions are Approximate, Actual May Vary.

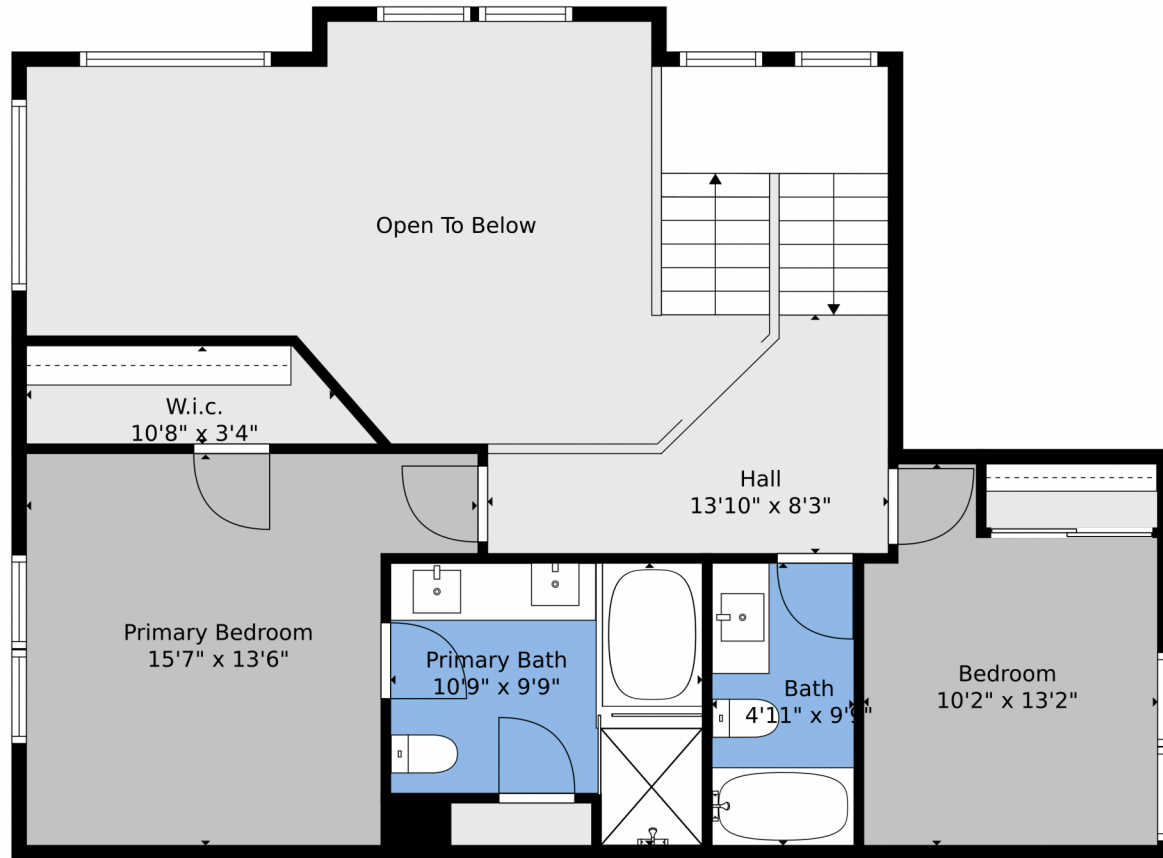


Suzana Sweney  
970-820-0222  
ssweney@kw.com



Scan code for more property details





**TOTAL: 1465 sq. ft**  
BELOW GROUND: 0 sq. ft, FLOOR 2: 790 sq. ft, FLOOR 3: 675 sq. ft  
EXCLUDED AREAS: LOW CEILING: 776 sq. ft, GARAGE: 559 sq. ft, OPEN TO BELOW: 271 sq. ft  
Floor Plan Created By V1photos.com, Measurements Deamed Highly Reliable But Not Guaranteed.



Disclaimer: Sizes and Dimensions are Approximate, Actual May Vary.



**Suzana Sweney**  
970-820-0222  
ssweney@kw.com



Scan code for more property details



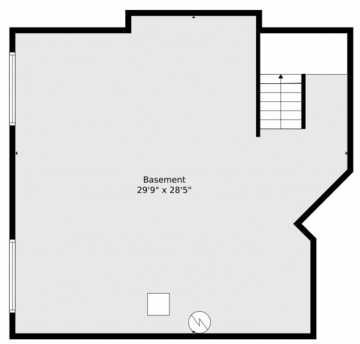
19420 E Mann Creek Drive, Parker, CO 80134 – floorplan\_all\_0



Floor 2



Floor 3



Floor 1



**TOTAL: 1465 sq. ft**  
BELOW GROUND: 0 sq. ft, FLOOR 2: 790 sq. ft, FLOOR 3: 675 sq. ft  
EXCLUDED AREAS: LOW CEILING: 776 sq. ft, GARAGE: 559 sq. ft, OPEN TO BELOW: 271 sq. ft  
Floor Plan Created By V1photos.com, Measurements Deamed Highly Reliable But Not Guaranteed.



Disclaimer: Sizes and Dimensions are Approximate, Actual May Vary.



Suzana Sweney  
970-820-0222  
ssweney@kw.com

Scan code for more property details

