



9677 Beryl Drive
Peyton, CO 80831



Single Family



3116 SQFT



3 Beds



2/1 Baths



2 Car



0.14 Acre



Erin Handlin

719-651-9683

erin.handlin.realtor@gmail.com

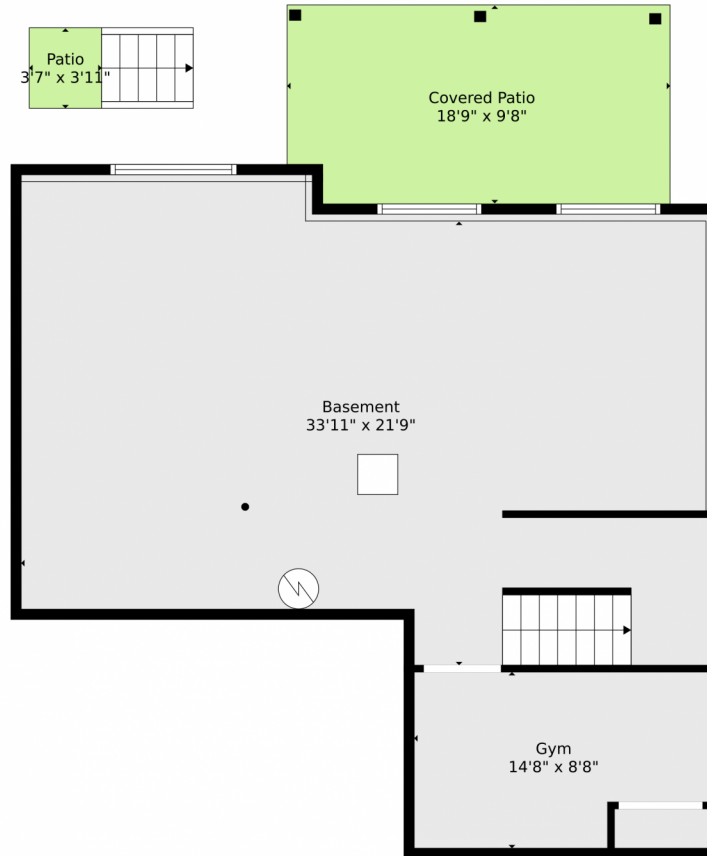
<https://erinhandlin.fathomrealty.com>



Scan code
for more
property
details



9677 Beryl Drive, Peyton, CO 80831 — Basement



TOTAL: 2248 sq. ft
BELOW GROUND: 132 sq. ft, FLOOR 2: 949 sq. ft, FLOOR 3: 1167 sq. ft
EXCLUDED AREAS: BASEMENT: 724 sq. ft, COVERED PATIO: 180 sq. ft, PATIO: 14 sq. ft,
GARAGE: 416 sq. ft, DECK: 202 sq. ft, PORCH: 87 sq. ft,
FIREPLACE: 8 sq. ft

Floor Plan Created By V1photos.com, Measurements Deamed Highly Reliable But Not Guaranteed.



Disclaimer: Sizes and Dimensions are Approximate, Actual May Vary.



Erin Handlin
719-651-9683
erin.handlin.realtor@gmail.com
<https://erinhandlin.fathomrealty.com>



Scan code
for more
property
details





TOTAL: 2248 sq. ft
BELOW GROUND: 132 sq. ft, FLOOR 2: 949 sq. ft, FLOOR 3: 1167 sq. ft
EXCLUDED AREAS: BASEMENT: 724 sq. ft, COVERED PATIO: 180 sq. ft, PATIO: 14 sq. ft,
GARAGE: 416 sq. ft, DECK: 202 sq. ft, PORCH: 87 sq. ft,
FIREPLACE: 8 sq. ft

Floor Plan Created By V1photos.com, Measurements Deamed Highly Reliable But Not Guaranteed.



Disclaimer: Sizes and Dimensions are Approximate, Actual May Vary.



Erin Handlin
719-651-9683
erin.handlin.realtor@gmail.com
<https://erinhandlin.fathomrealty.com>



Scan code
for more
property
details



9677 Beryl Drive, Peyton, CO 80831 – 2nd Level



TOTAL: 2248 sq. ft
BELOW GROUND: 132 sq. ft, FLOOR 2: 949 sq. ft, FLOOR 3: 1167 sq. ft
EXCLUDED AREAS: BASEMENT: 724 sq. ft, COVERED PATIO: 180 sq. ft, PATIO: 14 sq. ft,
GARAGE: 416 sq. ft, DECK: 202 sq. ft, PORCH: 87 sq. ft,
FIREPLACE: 8 sq. ft

Floor Plan Created By V1photos.com, Measurements Deamed Highly Reliable But Not Guaranteed.



Disclaimer: Sizes and Dimensions are Approximate, Actual May Vary.



Erin Handlin
719-651-9683
erin.handlin.realtor@gmail.com
<https://erinhandlin.fathomrealty.com>



Scan code
for more
property
details

9677 Beryl Drive, Peyton, CO 80831 – All Levels



Floor 2

Floor 3

Floor 1

TOTAL: 2248 sq. ft

BELOW GROUND: 132 sq. ft, FLOOR 2: 949 sq. ft, FLOOR 3: 1167 sq. ft
EXCLUDED AREAS: BASEMENT: 724 sq. ft, COVERED PATIO: 180 sq. ft, PATIO: 14 sq. ft,
GARAGE: 416 sq. ft, DECK: 202 sq. ft, PORCH: 87 sq. ft,
FIREPLACE: 8 sq. ft

Floor Plan Created By V1photos.com, Measurements Deamed Highly Reliable But Not Guaranteed.



Disclaimer: Sizes and Dimensions are Approximate, Actual May Vary.



Erin Handlin
719-651-9683
erin.handlin.realtor@gmail.com
<https://erinhandlin.fathomrealty.com>



Scan code
for more
property
details

