


 Single Family

 1705 SQFT

 3 Beds

 2 Baths

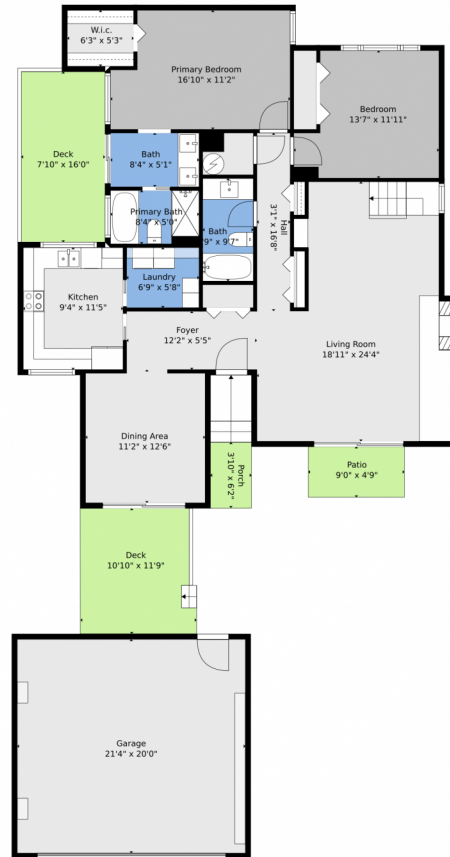
 2 Car



Alexis Foster
970-310-6999
alexisfoster@windermere.com



1904 Winterberry Way, Fort Collins, CO 80526 – Main



TOTAL: 1680 sq. ft
FLOOR 1: 1376 sq. ft, FLOOR 2: 304 sq. ft
EXCLUDED AREAS: GARAGE: 427 sq. ft, DECK: 245 sq. ft, PORCH: 24 sq. ft,
PATIO: 43 sq. ft, OPEN TO BELOW: 364 sq. ft

Floor Plan Created By V1photos.com, Measurements Deamed Highly Reliable But Not Guaranteed.



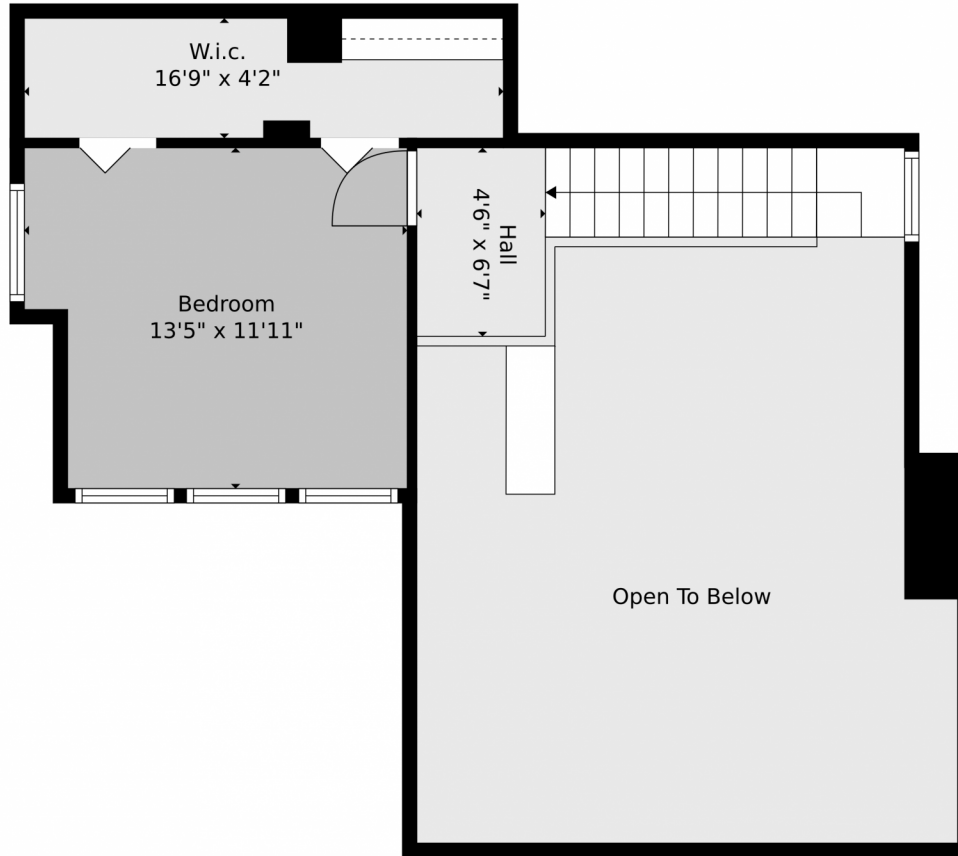
Disclaimer: Sizes and Dimensions are Approximate, Actual May Vary.



Alexis Foster
970-310-6999
alexisfoster@windermere.com

Scan code for more property details

1904 Winterberry Way, Fort Collins, CO 80526 – 2nd Level



TOTAL: 1680 sq. ft
FLOOR 1: 1376 sq. ft, FLOOR 2: 304 sq. ft
EXCLUDED AREAS: GARAGE: 427 sq. ft, DECK: 245 sq. ft, PORCH: 24 sq. ft,
PATIO: 43 sq. ft, OPEN TO BELOW: 364 sq. ft

Floor Plan Created By V1photos.com. Measurements Deamed Highly Reliable But Not Guaranteed.



Disclaimer: Sizes and Dimensions are Approximate, Actual May Vary.



Alexis Foster
970-310-6999
alexisfoster@windermere.com



Scan code
for more
property
details

1904 Winterberry Way, Fort Collins, CO 80526 – All Levels



TOTAL: 1680 sq. ft
FLOOR 1: 1376 sq. ft, FLOOR 2: 304 sq. ft
EXCLUDED AREAS: GARAGE: 427 sq. ft, DECK: 245 sq. ft, PORCH: 24 sq. ft,
PATIO: 43 sq. ft, OPEN TO BELOW: 364 sq. ft

Floor Plan Created By V1photos.com, Measurements Deemed Highly Reliable But Not Guaranteed.

Disclaimer: Sizes and Dimensions are Approximate, Actual May Vary.



Alexis Foster
970-310-6999
alexisfoster@windermere.com



Scan code
for more
property
details

