



18190 E Caspian Pl  
 Aurora, CO 80013  
 COMMUNITY: Lakeshore



Single Family



2465 SQFT



4 Beds



3 Baths



3 Car



0.17 Acre

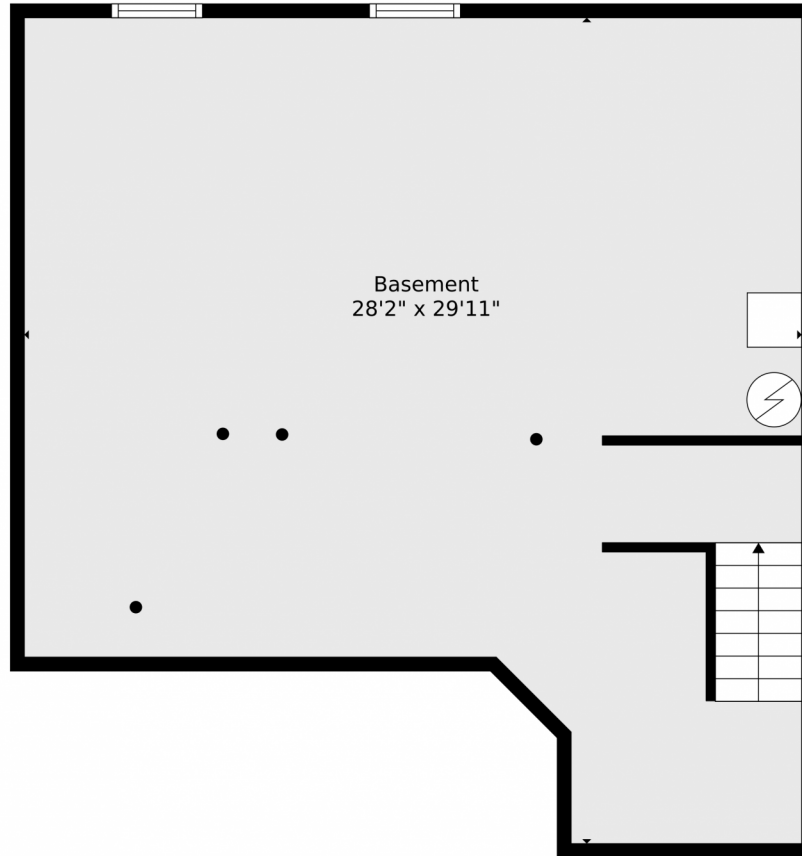


**ReeKae Tillman**  
 303-902-3094  
 reekae.tillman@gmail.com



Scan code  
 for more  
 property  
 details





**TOTAL: 2249 sq. ft**  
BELOW GROUND: 0 sq. ft, FLOOR 2: 1186 sq. ft, FLOOR 3: 1063 sq. ft  
EXCLUDED AREAS: BASEMENT: 712 sq. ft, GARAGE: 611 sq. ft, COVERED DECK: 497 sq. ft,  
PORCH: 43 sq. ft, OPEN TO BELOW: 472 sq. ft

Floor Plan Created By V1photos.com. Measurements Deamed Highly Reliable But Not Guaranteed.



Disclaimer: Sizes and Dimensions are Approximate, Actual May Vary.



**ReeKae Tillman**  
303-902-3094  
reekae.tillman@gmail.com





**TOTAL: 2249 sq. ft**  
BELOW GROUND: 0 sq. ft, FLOOR 2: 1186 sq. ft, FLOOR 3: 1063 sq. ft  
EXCLUDED AREAS: BASEMENT: 712 sq. ft, GARAGE: 611 sq. ft, COVERED DECK: 497 sq. ft,  
PORCH: 43 sq. ft, OPEN TO BELOW: 472 sq. ft

Floor Plan Created By V1photos.com. Measurements Deamed Highly Reliable But Not Guaranteed.



Disclaimer: Sizes and Dimensions are Approximate, Actual May Vary.

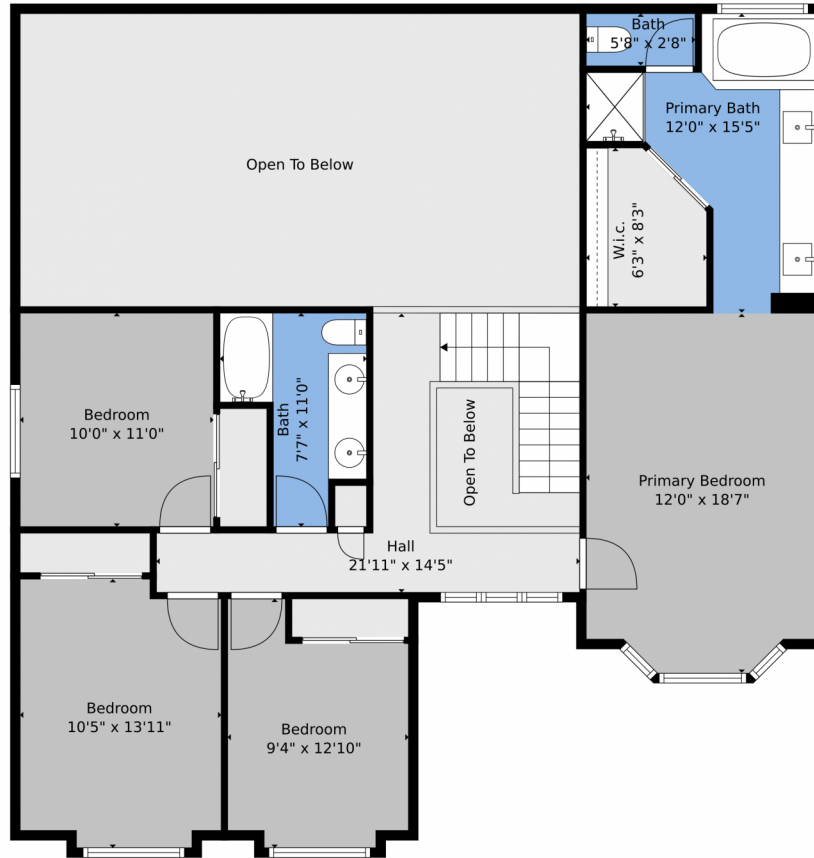


ReeKae Tillman  
303-902-3094  
reekae.tillman@gmail.com



Scan code  
for more  
property  
details

# 18190 E Caspian Pl, Aurora, CO 80013 – 2nd Level



**TOTAL: 2249 sq. ft**  
BELOW GROUND: 0 sq. ft, FLOOR 2: 1186 sq. ft, FLOOR 3: 1063 sq. ft  
EXCLUDED AREAS: BASEMENT: 712 sq. ft, GARAGE: 611 sq. ft, COVERED DECK: 497 sq. ft,  
PORCH: 43 sq. ft, OPEN TO BELOW: 472 sq. ft

Floor Plan Created By V1photos.com. Measurements Deamed Highly Reliable But Not Guaranteed.



Disclaimer: Sizes and Dimensions are Approximate, Actual May Vary.



ReeKae Tillman  
303-902-3094  
reekae.tillman@gmail.com





# 18190 E Caspian Pl, Aurora, CO 80013 – All Levels



**TOTAL: 2249 sq. ft**  
 BELOW GROUND: 0 sq. ft, FLOOR 2: 1186 sq. ft, FLOOR 3: 1063 sq. ft  
 EXCLUDED AREAS: BASEMENT: 712 sq. ft, GARAGE: 611 sq. ft, COVERED DECK: 497 sq. ft,  
 PORCH: 43 sq. ft, OPEN TO BELOW: 472 sq. ft

Floor Plan Created By V1photos.com, Measurements Deamed Highly Reliable But Not Guaranteed.



Disclaimer: Sizes and Dimensions are Approximate, Actual May Vary.



**ReeKae Tillman**  
 303-902-3094  
 reekae.tillman@gmail.com

