


 Single Family

 2151 SQFT

 5 Beds

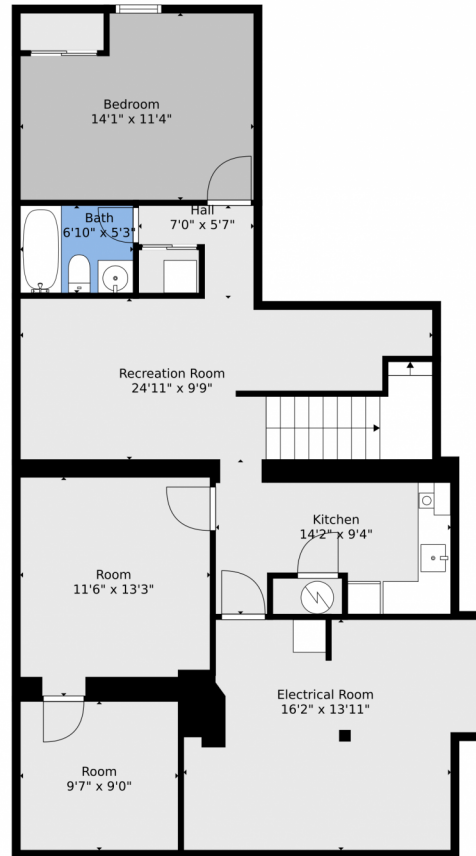
 3 Baths



Taylor Haas
303-665-7368
taylorh@coloradorpm.com
<https://www.coloradorpm.com/available-rental-properties-denver>



2900 Saint Paul Street, Denver, CO 80205 – Lower Level



TOTAL: 2267 sq. ft
BELOW GROUND: 877 sq. ft, FLOOR 2: 1390 sq. ft
EXCLUDED AREAS: ELECTRICAL ROOM: 232 sq. ft, STORAGE: 70 sq. ft, PORCH: 80 sq. ft,
PATIO: 731 sq. ft, CARPORT: 609 sq. ft, BAY WINDOW: 16 sq. ft

Floor Plan Created By V1photos.com, Measurements Deamed Highly Reliable But Not Guaranteed.



Disclaimer: Sizes and Dimensions are Approximate, Actual May Vary.



Taylor Haas
303-665-7368
taylorh@coloradorm.com
<https://www.coloradorm.com/available-rental-properties-denver>



Scan code
for more
property
details





TOTAL: 2267 sq. ft
BELOW GROUND: 877 sq. ft, FLOOR 2: 1390 sq. ft
EXCLUDED AREAS: ELECTRICAL ROOM: 232 sq. ft, STORAGE: 70 sq. ft, PORCH: 80 sq. ft,
PATIO: 731 sq. ft, CARPORT: 609 sq. ft, BAY WINDOW: 16 sq. ft

Floor Plan Created By V1photos.com, Measurements Deamed Highly Reliable But Not Guaranteed.



Disclaimer: Sizes and Dimensions are Approximate, Actual May Vary.



Taylor Haas
303-665-7368
taylorh@coloradorm.com
<https://www.coloradorm.com/available-rental-properties-denv>



Scan code
for more
property
details



2900 Saint Paul Street, Denver, CO 80205 – All Levels



TOTAL: 2267 sq. ft
BELOW GROUND: 877 sq. ft, FLOOR 2: 1390 sq. ft
EXCLUDED AREAS: ELECTRICAL ROOM: 232 sq. ft, STORAGE: 70 sq. ft, PORCH: 80 sq. ft,
PATIO: 731 sq. ft, CARPORT: 609 sq. ft, BAY WINDOW: 16 sq. ft

Floor Plan Created By V1photos.com, Measurements Deamed Highly Reliable But Not Guaranteed.



Disclaimer: Sizes and Dimensions are Approximate, Actual May Vary.



Taylor Haas

303-665-7368

taylorh@coloradorpm.com

<https://www.coloradorpm.com/available-rental-properties-denver>



Scan code
for more
property
details

