


 Single Family

 2400 SQFT

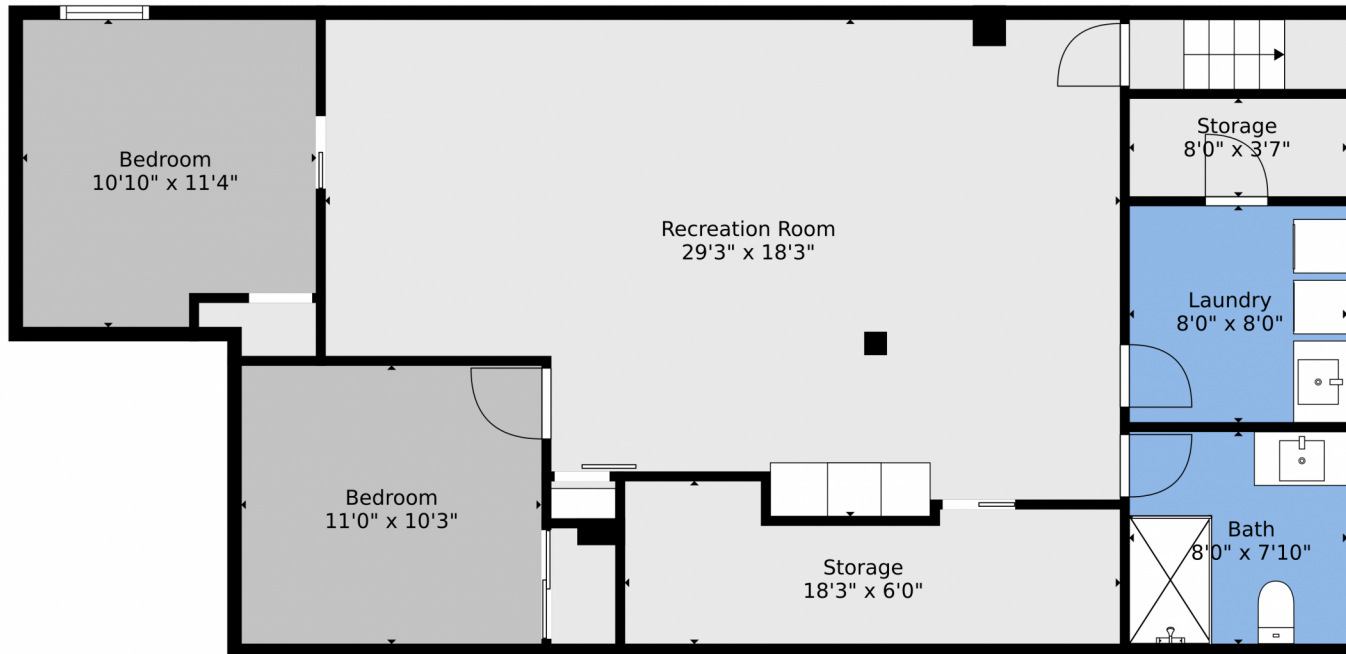
 4 Beds

 2 Baths



**Joey Hoiescu**  
619-806-7014  
joey@luxdenver.com  
<https://www.thepropertysomm.com>





**TOTAL: 2035 sq. ft**  
BELOW GROUND: 905 sq. ft, FLOOR 2: 1130 sq. ft  
EXCLUDED AREAS: STORAGE: 121 sq. ft, PATIO: 274 sq. ft, PORCH: 74 sq. ft  
Floor Plan Created By V1photos.com, Measurements Deamed Highly Reliable But Not Guaranteed.



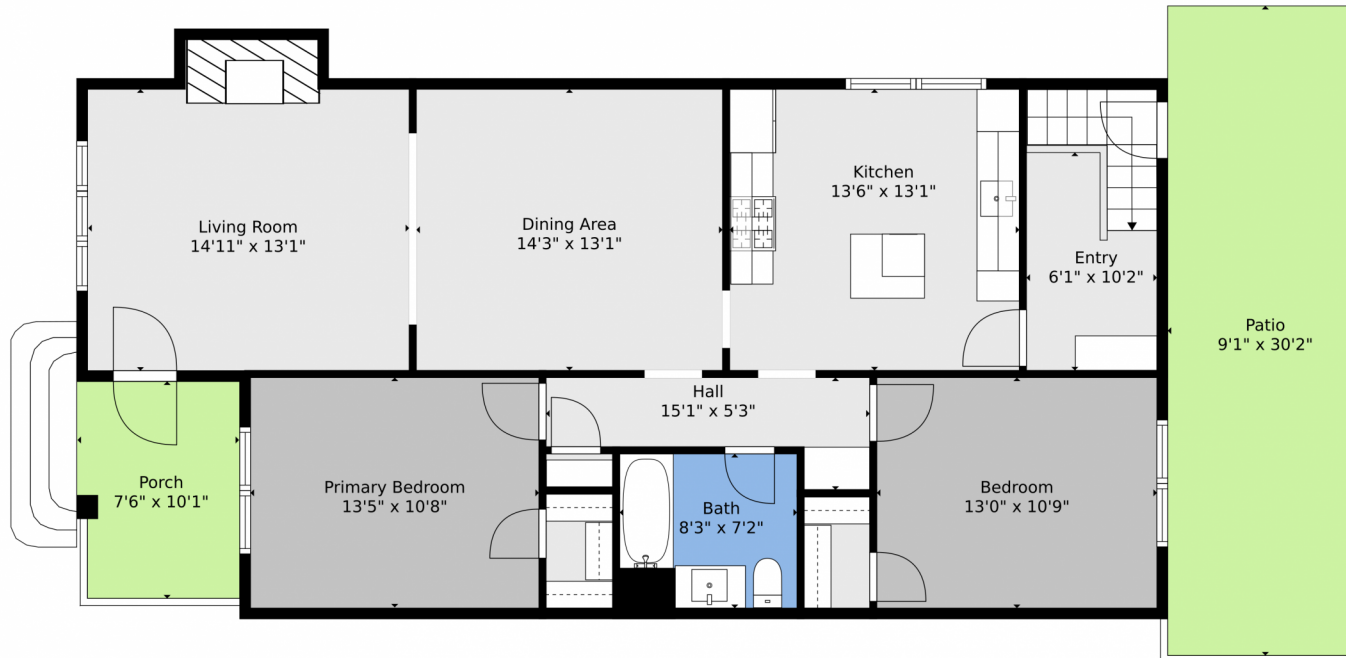
Disclaimer: Sizes and Dimensions are Approximate, Actual May Vary.



**Joey Hoiescu**  
619-806-7014  
joey@luxdenver.com  
<https://www.thepropertysomm.com>



1445 Osceola Street, Denver, CO 80204 – Main



**TOTAL: 2035 sq. ft**  
BELOW GROUND: 905 sq. ft, FLOOR 2: 1130 sq. ft  
EXCLUDED AREAS: STORAGE: 121 sq. ft, PATIO: 274 sq. ft, PORCH: 74 sq. ft  
Floor Plan Created By V1photos.com, Measurements Deamed Highly Reliable But Not Guaranteed.



Disclaimer: Sizes and Dimensions are Approximate, Actual May Vary.

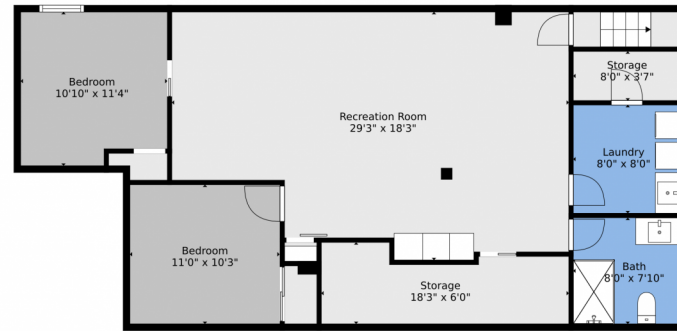
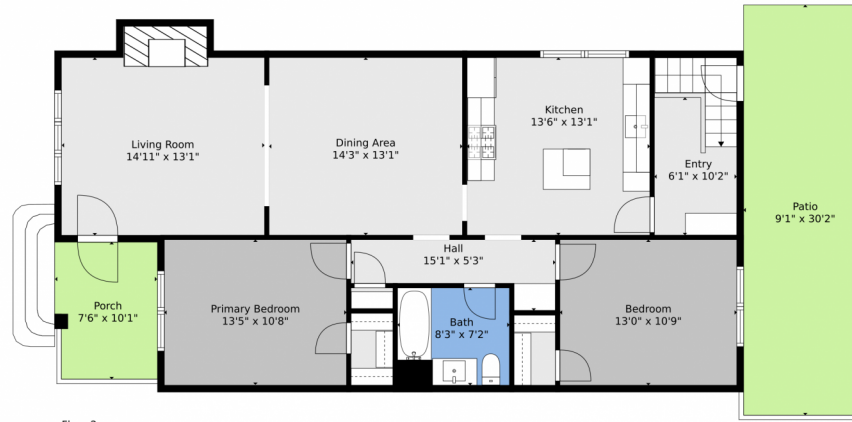


**Joey Hoiescu**  
619-806-7014  
joey@luxdenver.com  
<https://www.thepropertysomm.com>



Scan code for more property details

# 1445 Osceola Street, Denver, CO 80204 – All Levels



**TOTAL: 2035 sq. ft**  
BELOW GROUND: 905 sq. ft, FLOOR 2: 1130 sq. ft  
EXCLUDED AREAS: STORAGE: 121 sq. ft, PATIO: 274 sq. ft, PORCH: 74 sq. ft  
Floor Plan Created By V1photos.com, Measurements Deamed Highly Reliable But Not Guaranteed.



Disclaimer: Sizes and Dimensions are Approximate, Actual May Vary.



**Joey Hoiescu**  
619-806-7014  
joey@luxdenver.com  
<https://www.thepropertysomm.com>

