



1100 SE 5th Ct
 Pompano Beach, FL 33060
 COMMUNITY: NOBLE POINT

MLS
 # F10465196
 PRICE \$698,000



Condominium



1498 SQFT



2 Beds



2/1 Baths

PROPERTY DETAILS

Welcome to your waterfront paradise! This remodeled townhome features an open kitchen and living area that maximizes stunning water views. The modern kitchen is perfect for entertaining, while the living area creates a cozy atmosphere. Enjoy two screened-in balconies and a private rooftop deck for outdoor relaxation. Hurricane-impact windows and doors provide safety. A dock with electricity and water caters to boating enthusiasts. The complex offers resort-style amenities, including a pool, hot tub, gym, and lit tennis and pickleball courts, blending luxury and comfort perfectly.

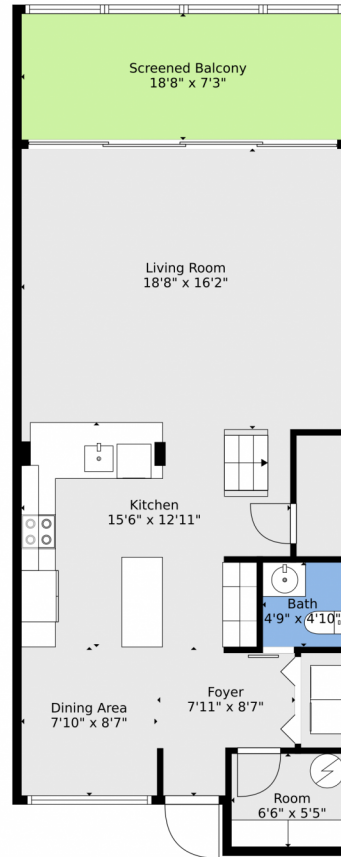


Kenny Silverman
 954-551-9099
 kenny@silvermanfirst.com
<https://www.silvermanfirst.com/>



Scan code
 for more
 property
 details





TOTAL: 1537 sq. ft
BELOW GROUND: 715 sq. ft, FLOOR 2: 822 sq. ft
EXCLUDED AREAS: SCREENED BALCONY: 136 sq. ft, OPEN TO BELOW: 74 sq. ft, TERRACE: 218 sq. ft
Floor Plan Created By V1photos.com, Measurements Deamed Highly Reliable But Not Guaranteed.



Disclaimer: Sizes and Dimensions are Approximate, Actual May Vary.



Kenny Silverman
954-551-9099
kenny@silvermanfirst.com
<https://www.silvermanfirst.com/>



Scan code
for more
property
details

1100 SE 5th Ct, Pompano Beach, FL 33060 – 2nd Level



TOTAL: 1537 sq. ft
BELOW GROUND: 715 sq. ft, FLOOR 2: 822 sq. ft
EXCLUDED AREAS: SCREENED BALCONY: 136 sq. ft, OPEN TO BELOW: 74 sq. ft, TERRACE: 218 sq. ft

Floor Plan Created By V1photos.com, Measurements Deamed Highly Reliable But Not Guaranteed.



Disclaimer: Sizes and Dimensions are Approximate, Actual May Vary.



Kenny Silverman
954-551-9099
kenny@silvermanfirst.com
<https://www.silvermanfirst.com/>



Scan code
for more
property
details

1100 SE 5th Ct, Pompano Beach, FL 33060 – All Levels



TOTAL: 1537 sq. ft
BELOW GROUND: 715 sq. ft, FLOOR 2: 822 sq. ft
EXCLUDED AREAS: SCREENED BALCONY: 136 sq. ft, OPEN TO BELOW: 74 sq. ft, TERRACE: 218 sq. ft

Floor Plan Created By V1photos.com, Measurements Deamed Highly Reliable But Not Guaranteed.



Disclaimer: Sizes and Dimensions are Approximate, Actual May Vary.



Kenny Silverman
954-551-9099
kenny@silvermanfirst.com
<https://www.silvermanfirst.com/>



Scan code
for more
property
details