

Remarkable one of a kind 2 story that lives like a ranch!



Single Family



5043 SQFT



6 Beds



4/1 Baths



4 Car



5.07 Acre

## PROPERTY DETAILS

Discover this unique 2-story home in Wild Pointe, designed for ranch-style living and allowing up to two horses per property. The sellers have invested over \$90k in upgrades! This home features an oversized 4-car garage with a Tesla charger and a 36x30 outbuilding with a loft and optional car lift. Set on 5 acres with \$250k in landscaping, it offers stunning views of Pikes Peak. Inside, enjoy a gourmet kitchen with leather granite counters and stainless appliances, a main-level primary bedroom, and a versatile office/bedroom with a Murphy bed. The finished walkout basement includes a 13-seat theater and recreation area. Relax by the fire pit or grill on the upper patio under the light-strung pavilion. This home is a perfect blend of luxury and comfort.



Jodi Rae Randa

720-244-1796

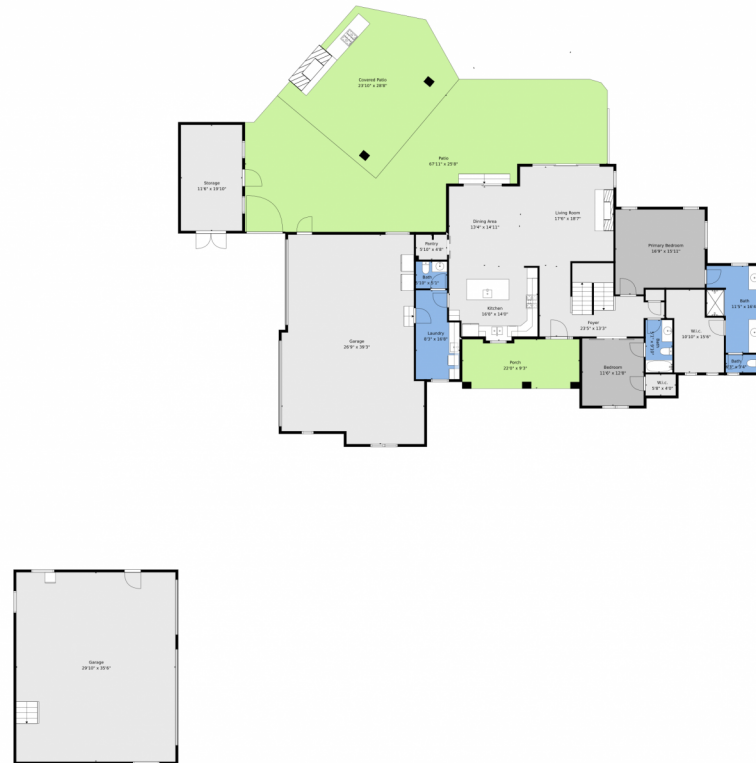
jodi@jodiranda.com

<https://JodiRanda.com>



Scan code  
for more  
property  
details





BELOW GROUND: 1688 sq. ft, FLOOR 2: 1996 sq. ft, FLOOR 3: 616 sq. ft, FLOOR 4: 0 sq. ft  
EXCLUDED AREAS: STORAGE: 462 sq. ft, PATIO: 1319 sq. ft, GARAGE: 2006 sq. ft,  
PORCH: 198 sq. ft, COVERED PATIO: 621 sq. ft, OPEN TO BELOW: 813 sq. ft,  
ATTIC: 728 sq. ft




Scan code  
for more  
property  
details



## 1300 Legacy Trail, Elizabeth, CO 80107 — 2nd Level



**TOTAL: 4300 sq. ft**  
BELOW GROUND: 1688 sq. ft, FLOOR 2: 1996 sq. ft, FLOOR 3: 616 sq. ft, FLOOR 4: 0 sq. ft  
EXCLUDED AREAS: STORAGE: 462 sq. ft, PATIO: 1319 sq. ft, GARAGE: 2006 sq. ft,  
PORCH: 198 sq. ft, COVERED PATIO: 621 sq. ft, OPEN TO BELOW: 813 sq. ft,  
ATTIC: 728 sq. ft

Floor Plan Created By V1photos.com, Measurements Deamed Highly Reliable But Not Guaranteed.



Disclaimer: Sizes and Dimensions are Approximate, Actual May Vary.



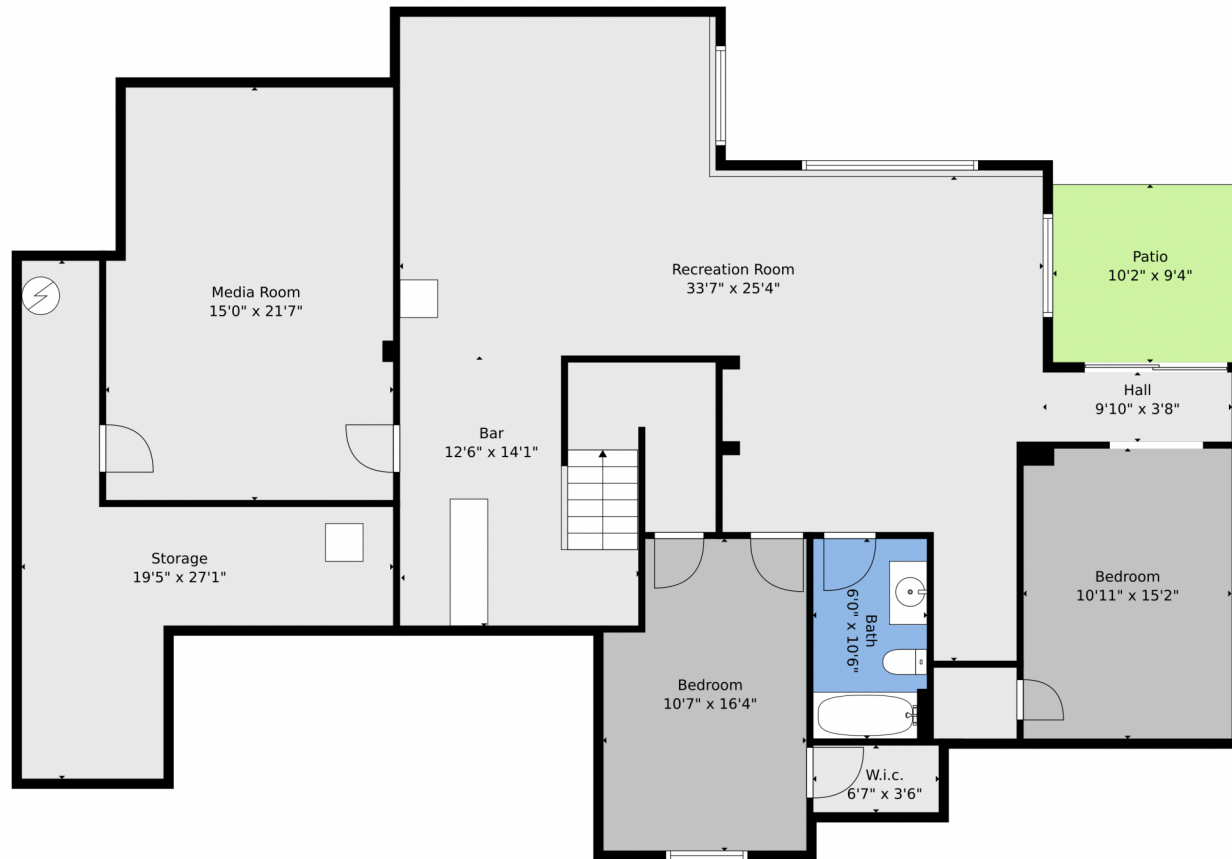
**Jodi Rae Randa**  
720-244-1796  
jodi@jodiranda.com  
<https://JodiRanda.com>



Scan code  
for more  
property  
details



# 1300 Legacy Trail, Elizabeth, CO 80107 — Lower Level



**TOTAL: 4300 sq. ft**  
BELOW GROUND: 1688 sq. ft, FLOOR 2: 1996 sq. ft, FLOOR 3: 616 sq. ft, FLOOR 4: 0 sq. ft  
EXCLUDED AREAS: STORAGE: 462 sq. ft, PATIO: 1319 sq. ft, GARAGE: 2006 sq. ft,  
PORCH: 198 sq. ft, COVERED PATIO: 621 sq. ft, OPEN TO BELOW: 813 sq. ft,  
ATTIC: 728 sq. ft

Floor Plan Created By V1photos.com, Measurements Deamed Highly Reliable But Not Guaranteed.



Disclaimer: Sizes and Dimensions are Approximate, Actual May Vary.



**Jodi Rae Randa**  
720-244-1796  
jodi@jodiranda.com  
<https://JodiRanda.com>



Scan code  
for more  
property  
details

