




1427 North Murray Boulevard
Colorado Springs, CO 80915



 Single Family

 2052 SQFT

 4 Beds

 2 Baths

 1 Car

Terry Moss
720-651-1734
tmoss@wedgewoodhomes.com



1427 North Murray Boulevard, Colorado Springs, CO 80915 – Lower Level



TOTAL: 1853 sq. ft
BELOW GROUND: 872 sq. ft, FLOOR 2: 981 sq. ft
EXCLUDED AREAS: ELECTRICAL ROOM: 92 sq. ft, GARAGE: 271 sq. ft, PORCH: 78 sq. ft,
COVERED PATIO: 528 sq. ft, PATIO: 121 sq. ft

Floor Plan Created By V1photos.com. Measurements Deamed Highly Reliable But Not Guaranteed.



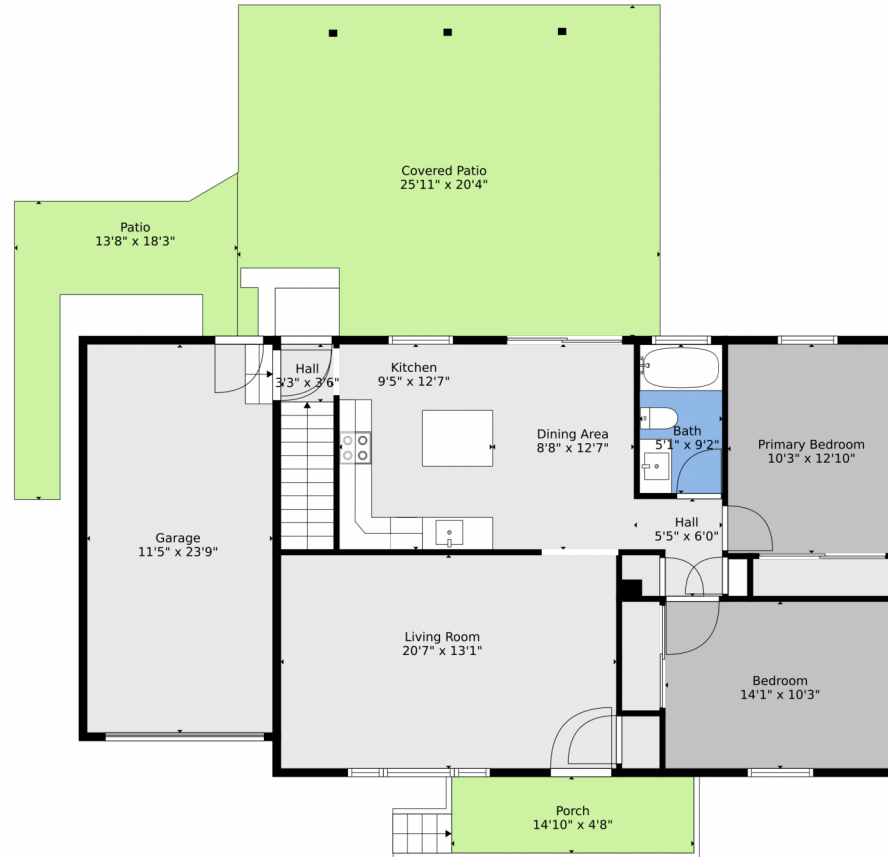
Disclaimer: Sizes and Dimensions are Approximate, Actual May Vary.

Terry Moss
720-651-1734
tmoss@wedgewoodhomes.com



Scan code
for more
property
details

1427 North Murray Boulevard, Colorado Springs, CO 80915 – Main



TOTAL: 1853 sq. ft
BELOW GROUND: 872 sq. ft, FLOOR 2: 981 sq. ft
EXCLUDED AREAS: ELECTRICAL ROOM: 92 sq. ft, GARAGE: 271 sq. ft, PORCH: 78 sq. ft,
COVERED PATIO: 528 sq. ft, PATIO: 121 sq. ft

Floor Plan Created By V1photos.com, Measurements Deamed Highly Reliable But Not Guaranteed.



Disclaimer: Sizes and Dimensions are Approximate, Actual May Vary.

Terry Moss
720-651-1734
tmoss@wedgewoodhomes.com



Scan code
for more
property
details

1427 North Murray Boulevard, Colorado Springs, CO 80915 – All Levels



TOTAL: 1853 sq. ft
BELOW GROUND: 872 sq. ft, FLOOR 2: 981 sq. ft
EXCLUDED AREAS: ELECTRICAL ROOM: 92 sq. ft, GARAGE: 271 sq. ft, PORCH: 78 sq. ft,
COVERED PATIO: 528 sq. ft, PATIO: 121 sq. ft

Floor Plan Created By V1photos.com, Measurements Deamed Highly Reliable But Not Guaranteed.



Disclaimer: Sizes and Dimensions are Approximate, Actual May Vary.

Terry Moss
720-651-1734
tmoss@wedgewoodhomes.com



Scan code
for more
property
details