



Single Family



1422 SQFT

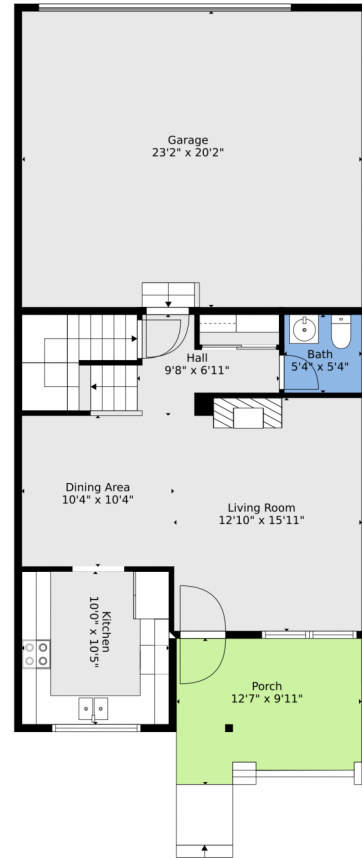


Lindsey Crisanti
970-420-4498
lindseyc@windermere.com



Scan code
for more
property
details





TOTAL: 1372 sq. ft
BELOW GROUND: 0 sq. ft, FLOOR 2: 565 sq. ft, FLOOR 3: 807 sq. ft
EXCLUDED AREAS: BASEMENT: 564 sq. ft, GARAGE: 468 sq. ft, PORCH: 116 sq. ft,
OPEN TO BELOW: 173 sq. ft

Floor Plan Created By V1photos.com, Measurements Deamed Highly Reliable But Not Guaranteed.

Disclaimer: Sizes and Dimensions are Approximate, Actual May Vary.

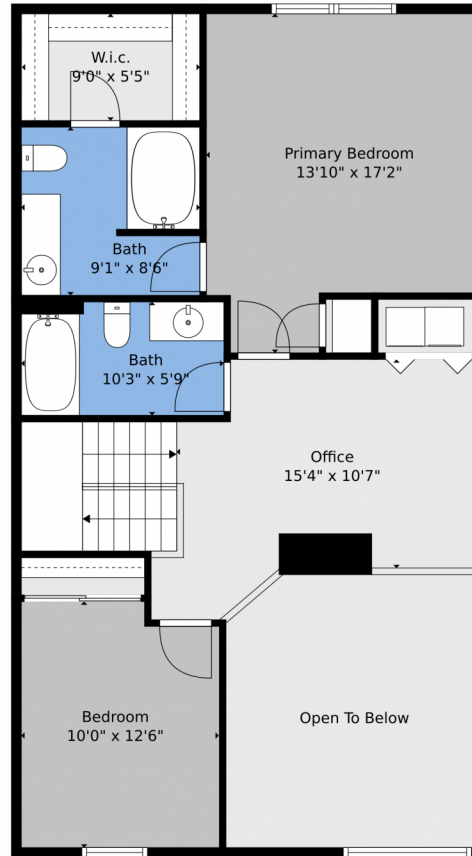


Lindsey Crisanti
970-420-4498
lindseyc@windermere.com



Scan code
for more
property
details

5145 Corbett Drive, Fort Collins, CO 80528 – 2nd Level



TOTAL: 1372 sq. ft
BELOW GROUND: 0 sq. ft, FLOOR 2: 565 sq. ft, FLOOR 3: 807 sq. ft
EXCLUDED AREAS: BASEMENT: 564 sq. ft, GARAGE: 468 sq. ft, PORCH: 116 sq. ft,
OPEN TO BELOW: 173 sq. ft

Floor Plan Created By V1photos.com. Measurements Deamed Highly Reliable But Not Guaranteed.

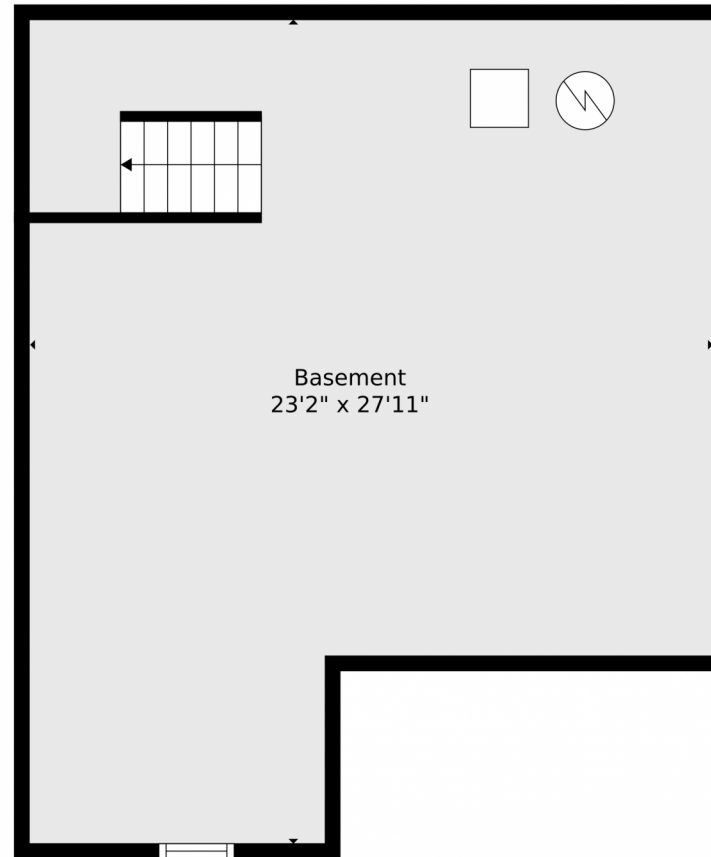
Disclaimer: Sizes and Dimensions are Approximate, Actual May Vary.



Lindsey Crisanti
970-420-4498
lindseyc@windermere.com



Scan code
for more
property
details



TOTAL: 1372 sq. ft
BELOW GROUND: 0 sq. ft, FLOOR 2: 565 sq. ft, FLOOR 3: 807 sq. ft
EXCLUDED AREAS: BASEMENT: 564 sq. ft, GARAGE: 468 sq. ft, PORCH: 116 sq. ft,
OPEN TO BELOW: 173 sq. ft

Floor Plan Created By V1photos.com. Measurements Deamed Highly Reliable But Not Guaranteed.

Disclaimer: Sizes and Dimensions are Approximate, Actual May Vary.



Lindsey Crisanti
970-420-4498
lindseyc@windermere.com



5145 Corbett Drive, Fort Collins, CO 80528 – All Levels



TOTAL: 1372 sq. ft
BELOW GROUND: 0 sq. ft, FLOOR 2: 565 sq. ft, FLOOR 3: 807 sq. ft
EXCLUDED AREAS: BASEMENT: 564 sq. ft, GARAGE: 468 sq. ft, PORCH: 116 sq. ft,
OPEN TO BELOW: 173 sq. ft

Floor Plan Created By V1photos.com, Measurements Deamed Highly Reliable But Not Guaranteed.

Disclaimer: Sizes and Dimensions are Approximate, Actual May Vary.



Lindsey Crisanti
970-420-4498
lindseyc@windermere.com

