




floorplan_single_1



 Single Family

 1184 SQFT

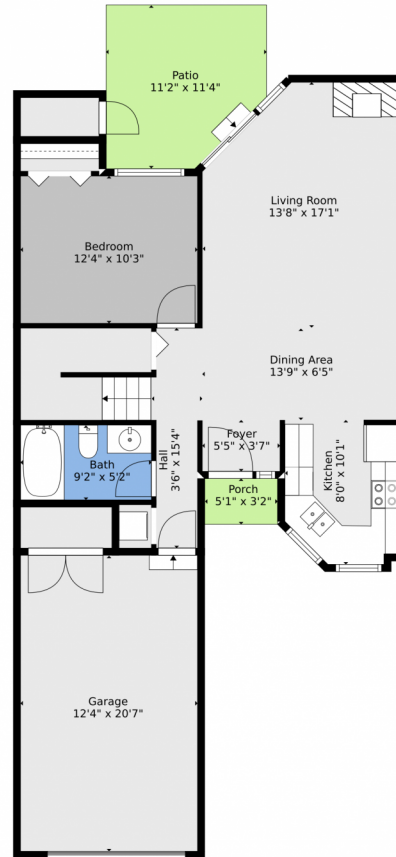
 2 Beds

 2 Baths



Taylor Haas
 303-665-7368
 taylorh@coloradorpm.com
<https://www.coloradorpm.com/available-rental-properties-denver>





TOTAL: 1131 sq. ft
FLOOR 1: 752 sq. ft, FLOOR 2: 379 sq. ft
EXCLUDED AREAS: GARAGE: 255 sq. ft, PORCH: 16 sq. ft, PATIO: 116 sq. ft,
OPEN TO BELOW: 187 sq. ft

Floor Plan Created By V1photos.com, Measurements Deamed Highly Reliable But Not Guaranteed.

Disclaimer: Sizes and Dimensions are Approximate, Actual May Vary.



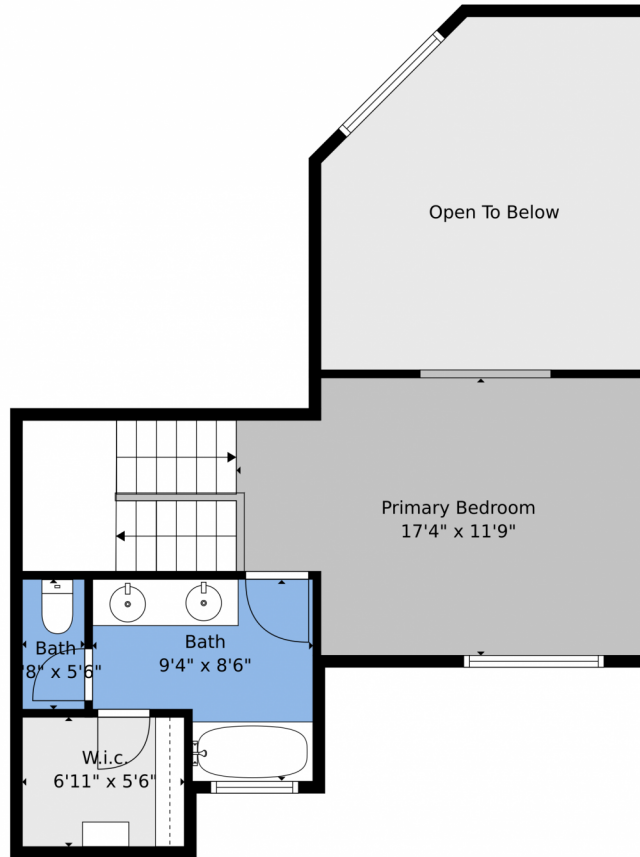
Taylor Haas
303-665-7368
taylorh@coloradorpm.com
<https://www.coloradorpm.com/available-rental-properties-denver>



Scan code
for more
property
details



325 Autumn Ridge Circle, Colorado Springs, CO 80906 – 2nd Level



TOTAL: 1131 sq. ft
FLOOR 1: 752 sq. ft, FLOOR 2: 379 sq. ft
EXCLUDED AREAS: GARAGE: 255 sq. ft, PORCH: 16 sq. ft, PATIO: 116 sq. ft,
OPEN TO BELOW: 187 sq. ft

Floor Plan Created By V1photos.com, Measurements Deamed Highly Reliable But Not Guaranteed.



Disclaimer: Sizes and Dimensions are Approximate, Actual May Vary.



Taylor Haas
303-665-7368
taylorh@coloradorpm.com
<https://www.coloradorpm.com/available-rental-properties-denver>



325 Autumn Ridge Circle, Colorado Springs, CO 80906 – All Levels



TOTAL: 1131 sq. ft
FLOOR 1: 752 sq. ft, FLOOR 2: 379 sq. ft
EXCLUDED AREAS: GARAGE: 255 sq. ft, PORCH: 16 sq. ft, PATIO: 116 sq. ft,
OPEN TO BELOW: 187 sq. ft

Floor Plan Created By V1photos.com, Measurements Deamed Highly Reliable But Not Guaranteed.

Disclaimer: Sizes and Dimensions are Approximate, Actual May Vary.



Taylor Haas
303-665-7368
taylorh@coloradorpm.com
<https://www.coloradorpm.com/available-rental-properties-denver>

