



Single Family



1795 SQFT



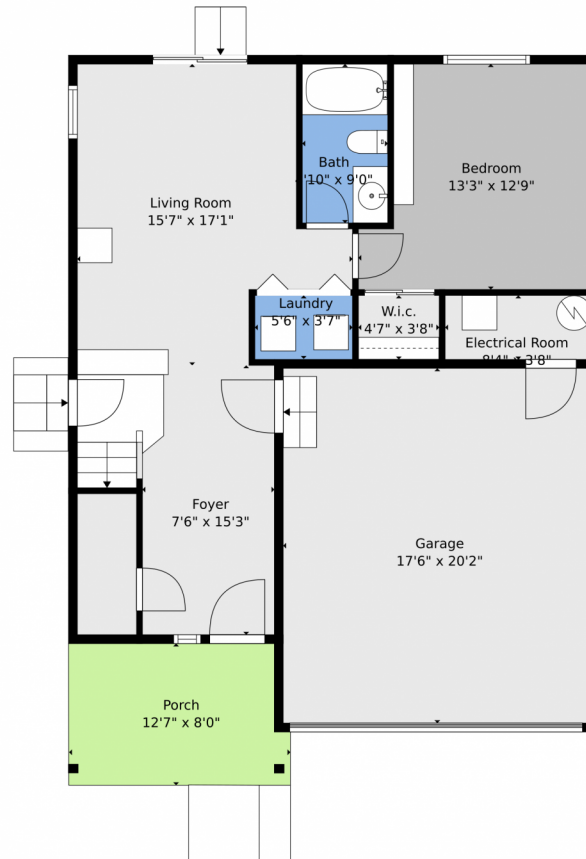
Jacqueline Feil
970-402-7509
jfeil@windermere.com



Scan code
for more
property
details



3912 Alcazar Drive, Castle Rock, CO 80109 – Lower Level



TOTAL: 1623 sq. ft
FLOOR 1: 634 sq. ft, FLOOR 2: 989 sq. ft
EXCLUDED AREAS: GARAGE: 352 sq. ft, ELECTRICAL ROOM: 30 sq. ft, PORCH: 97 sq. ft,
BALCONY: 59 sq. ft

Floor Plan Created By V1photos.com, Measurements Deamed Highly Reliable But Not Guaranteed.



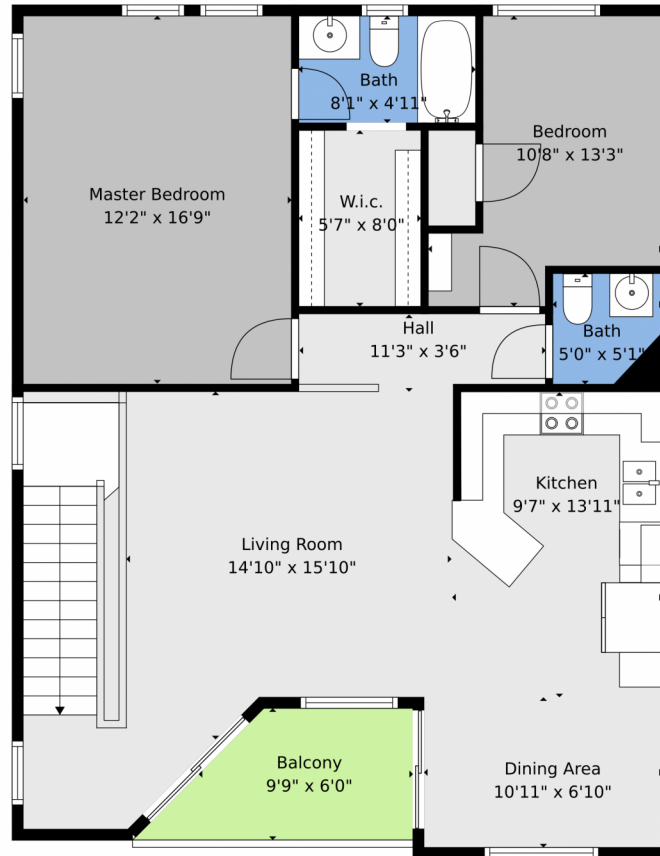
Disclaimer: Sizes and Dimensions are Approximate, Actual May Vary.



Jacqueline Feil
970-402-7509
jfeil@windermere.com



3912 Alcazar Drive, Castle Rock, CO 80109 – Main

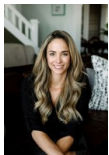


TOTAL: 1623 sq. ft
FLOOR 1: 634 sq. ft, FLOOR 2: 989 sq. ft
EXCLUDED AREAS: GARAGE: 352 sq. ft, ELECTRICAL ROOM: 30 sq. ft, PORCH: 97 sq. ft,
BALCONY: 59 sq. ft

Floor Plan Created By V1photos.com, Measurements Deamed Highly Reliable But Not Guaranteed.



Disclaimer: Sizes and Dimensions are Approximate, Actual May Vary.

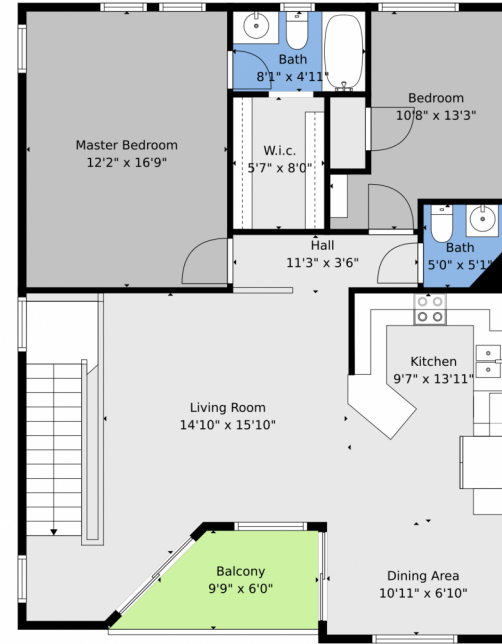
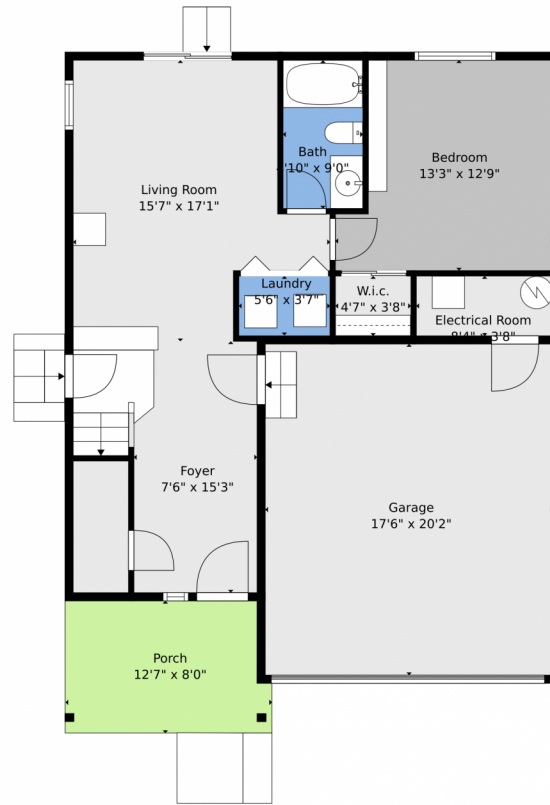


Jacqueline Feil
970-402-7509
jfeil@windermere.com



Scan code
for more
property
details

3912 Alcazar Drive, Castle Rock, CO 80109 – All Levels



TOTAL: 1623 sq. ft
FLOOR 1: 634 sq. ft, FLOOR 2: 989 sq. ft
EXCLUDED AREAS: GARAGE: 352 sq. ft, ELECTRICAL ROOM: 30 sq. ft, PORCH: 97 sq. ft,
BALCONY: 59 sq. ft

Floor Plan Created By V1photos.com, Measurements Deamed Highly Reliable But Not Guaranteed.



Disclaimer: Sizes and Dimensions are Approximate, Actual May Vary.



Jacqueline Feil
970-402-7509
jfeil@windermere.com

