







COMPASS

5526 Irish Pat Murphy Drive
Parker, CO 80134
COMMUNITY: The Pinery

MLS # 3110133
PRICE \$715,000



 Single Family  2441 SQFT  3 Beds  2/1 Baths  2 Car  0.45 Acre

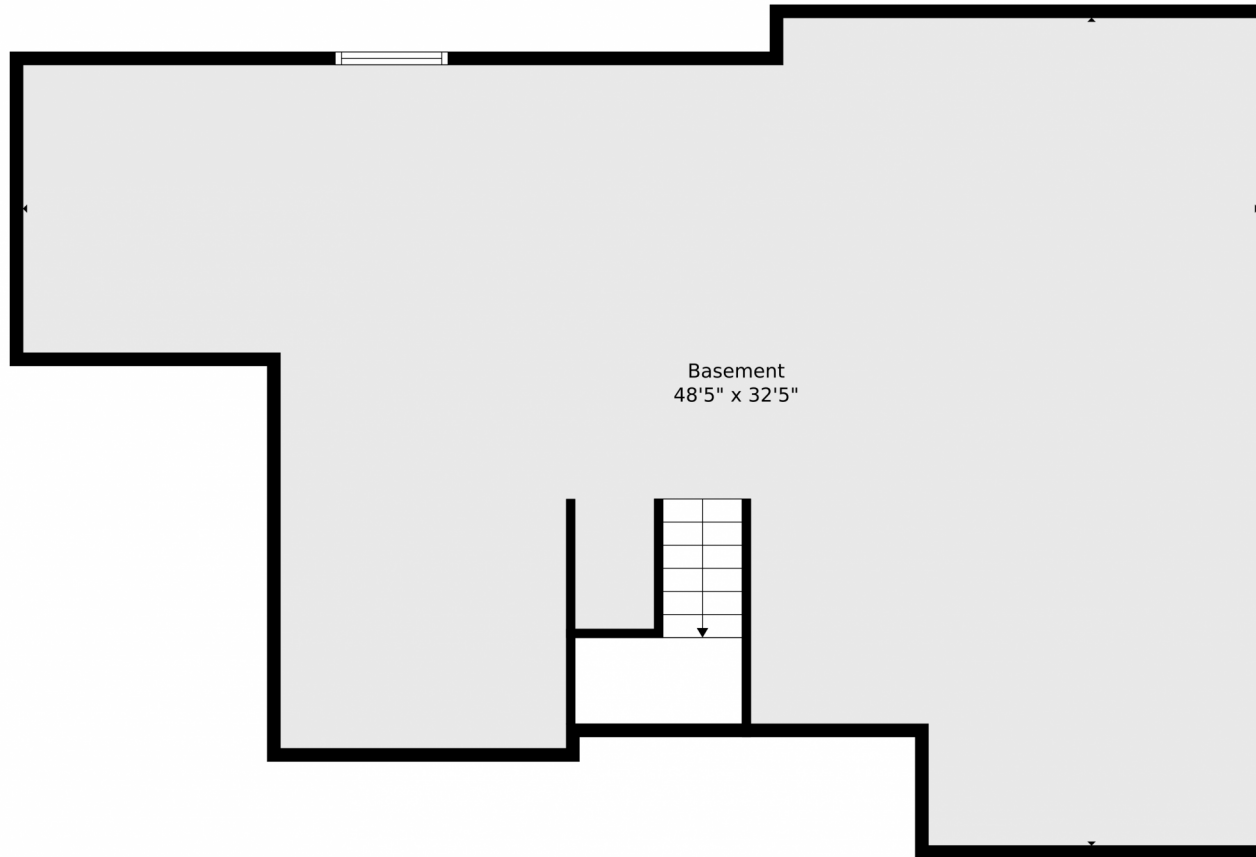
PROPERTY DETAILS

Don't miss this incredible opportunity in the prestigious Pinery subdivision! This stately home sits on a half-acre corner lot backing to forested open space. The main floor features soaring ceilings, a spacious living room, dining room, and an open-concept family room with a brick fireplace leading to a casual dining nook and kitchen. A convenient half bath is also located here. Upstairs, the primary suite includes a 5-piece en-suite bathroom, plus two additional bedrooms sharing a full bath. Step outside to a back deck that feels like a mountain retreat, perfect for relaxation and entertaining. The xeriscaped lot promotes water conservation, and the full unfinished basement offers endless customization potential. With a new roof in 2024 and a new water heater in 2022, this home is ready for your vision. Schedule a private showing for 5526 Irish Pat Murphy Drive today!



Brittany (Britt) Armstrong
303-550-1103
britt.armstrong@compass.com





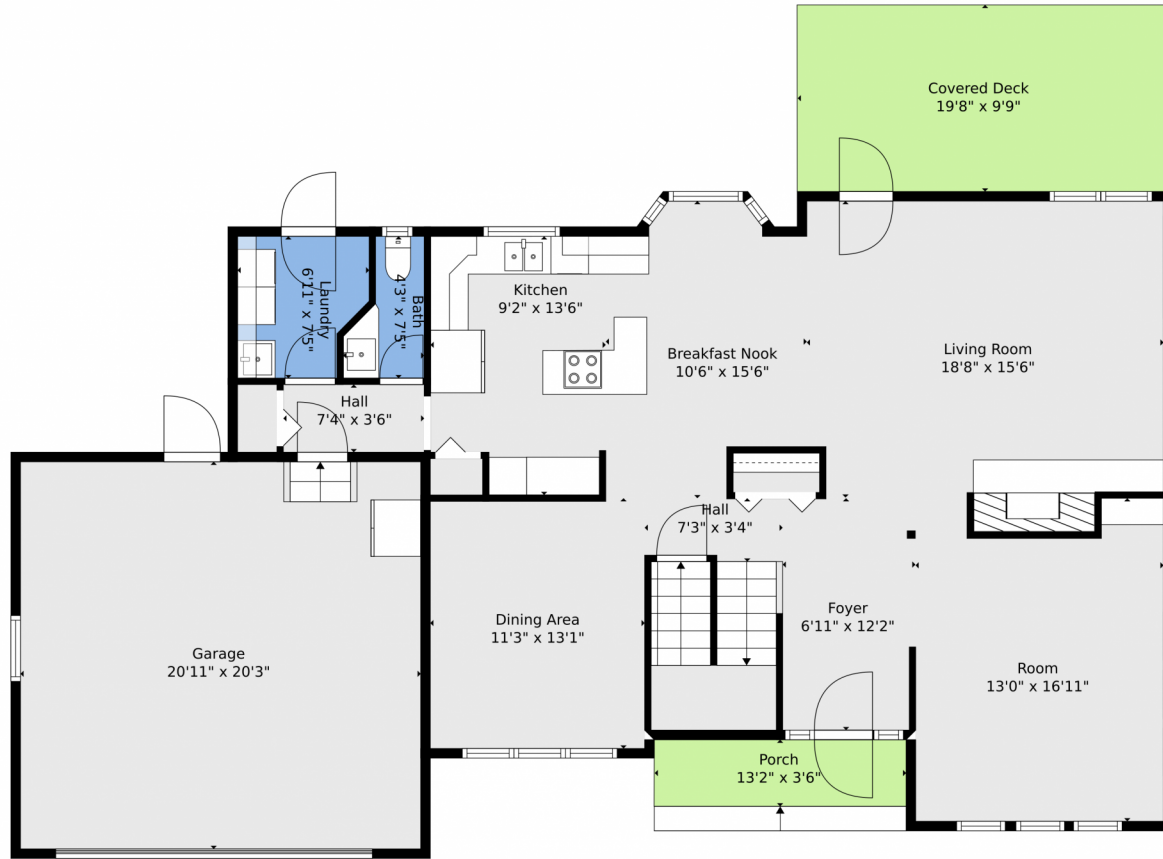
TOTAL: 3575 sq. ft
BELOW GROUND: 1212 sq. ft, FLOOR 2: 1222 sq. ft, FLOOR 3: 1141 sq. ft
EXCLUDED AREAS: GARAGE: 424 sq. ft, PORCH: 46 sq. ft, COVERED DECK: 192 sq. ft,
LOW CEILING: 18 sq. ft, BALCONY: 110 sq. ft, OPEN TO BELOW: 79 sq. ft
Floor Plan Created By V1photos.com, Measurements Deamed Highly Reliable But Not Guaranteed.

Disclaimer: Sizes and Dimensions are Approximate, Actual May Vary.



Brittany (Britt) Armstrong
303-550-1103
britt.armstrong@compass.com

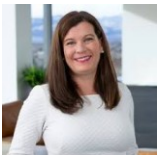




TOTAL: 3575 sq. ft
BELOW GROUND: 1212 sq. ft, FLOOR 2: 1222 sq. ft, FLOOR 3: 1141 sq. ft
EXCLUDED AREAS: GARAGE: 424 sq. ft, PORCH: 46 sq. ft, COVERED DECK: 192 sq. ft,
LOW CEILING: 18 sq. ft, BALCONY: 110 sq. ft, OPEN TO BELOW: 79 sq. ft
Floor Plan Created By V1photos.com, Measurements Deamed Highly Reliable But Not Guaranteed.



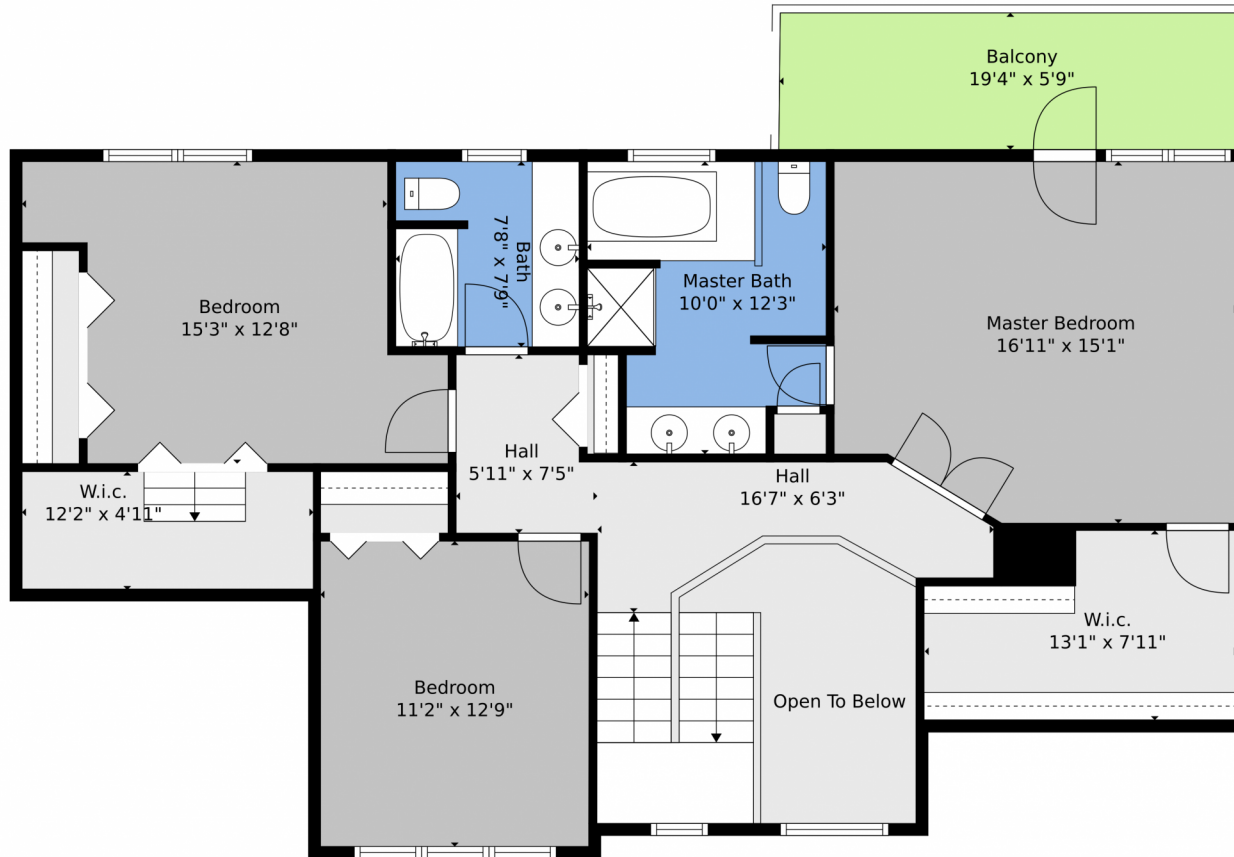
Disclaimer: Sizes and Dimensions are Approximate, Actual May Vary.



Brittany (Britt) Armstrong
303-550-1103
britt.armstrong@compass.com



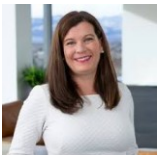
5526 Irish Pat Murphy Drive, Parker, CO 80134 – 2nd Level



TOTAL: 3575 sq. ft
BELOW GROUND: 1212 sq. ft, FLOOR 2: 1222 sq. ft, FLOOR 3: 1141 sq. ft
EXCLUDED AREAS: GARAGE: 424 sq. ft, PORCH: 46 sq. ft, COVERED DECK: 192 sq. ft,
LOW CEILING: 18 sq. ft, BALCONY: 110 sq. ft, OPEN TO BELOW: 79 sq. ft
Floor Plan Created By V1photos.com, Measurements Deamed Highly Reliable But Not Guaranteed.



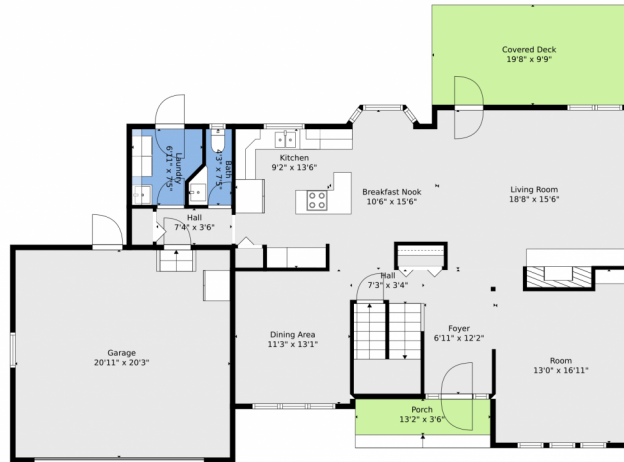
Disclaimer: Sizes and Dimensions are Approximate, Actual May Vary.



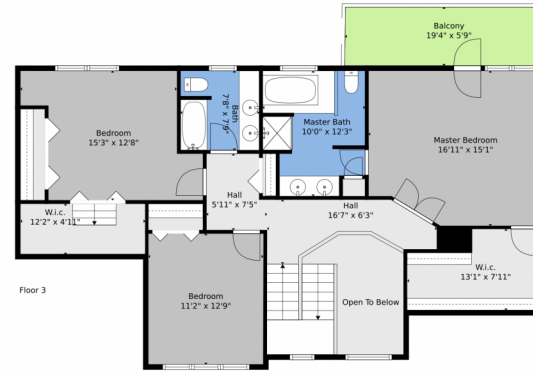
Brittany (Britt) Armstrong
303-550-1103
britt.armstrong@compass.com



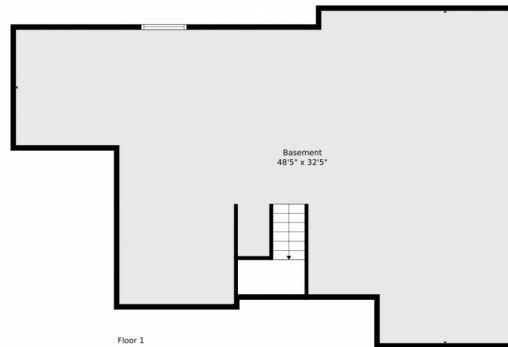
5526 Irish Pat Murphy Drive, Parker, CO 80134 – All Levels



Floor 2



Floor 3



Floor 1

TOTAL: 3575 sq. ft
BELOW GROUND: 1212 sq. ft, FLOOR 2: 1222 sq. ft, FLOOR 3: 1141 sq. ft
EXCLUDED AREAS: GARAGE: 424 sq. ft, PORCH: 46 sq. ft, COVERED DECK: 192 sq. ft
LOW CEILING: 18 sq. ft, BALCONY: 110 sq. ft, OPEN TO BELOW: 79 sq. ft

Floor Plan Created By V1photos.com, Measurements Deamed Highly Reliable But Not Guaranteed.



Disclaimer: Sizes and Dimensions are Approximate, Actual May Vary.



Brittany (Britt) Armstrong
303-550-1103
britt.armstrong@compass.com

