

 Single Family
  3673 SQFT
  4 Beds
  4 Baths
  2 Car
  0.15 Acre

PROPERTY DETAILS

Experience waterfront living in Denver's Wash Park neighborhood! This stunning four-bedroom, four-bath International Style home, designed by architect Steve Barsch and built in 2014, combines contemporary and timeless design. Enjoy panoramic views of Smith Lake and Wash Park from nearly every window. The living room features a woodburning fireplace, while the gourmet kitchen boasts Thermador and Decor appliances, a herringbone Carrera marble backsplash, and a large island. The executive office opens to patios, and the primary suite includes a private deck and a spa-inspired en suite bathroom. The finished basement offers a versatile bonus room. Enjoy a fully fenced backyard and a two-car detached garage with EV charging. Easy access to Wash Park's recreation and community events enhances this exceptional lifestyle.



Conrad Steller | Employing Broker
 720-435-4454
 Conrad@StellerRealEstate.com
<https://www.StellerRealEstate.com>



667 South Downing Street, Denver, CO 80209 – Main Level



TOTAL: 3063 sq. ft
BELOW GROUND: 660 sq. ft, FLOOR 2: 1318 sq. ft, FLOOR 3: 1085 sq. ft
EXCLUDED AREAS: ELECTRICAL ROOM: 188 sq. ft, FIREPLACE: 27 sq. ft, GARAGE: 485 sq. ft,
PORCH: 363 sq. ft, PATIO: 409 sq. ft, BALCONY: 196 sq. ft

Floor Plan Created By V1photos.com, Measurements Deamed Highly Reliable But Not Guaranteed.



Disclaimer: Sizes and Dimensions are Approximate, Actual May Vary.



Conrad Steller | Employing Broker

720-435-4454

Conrad@StellerRealEstate.com

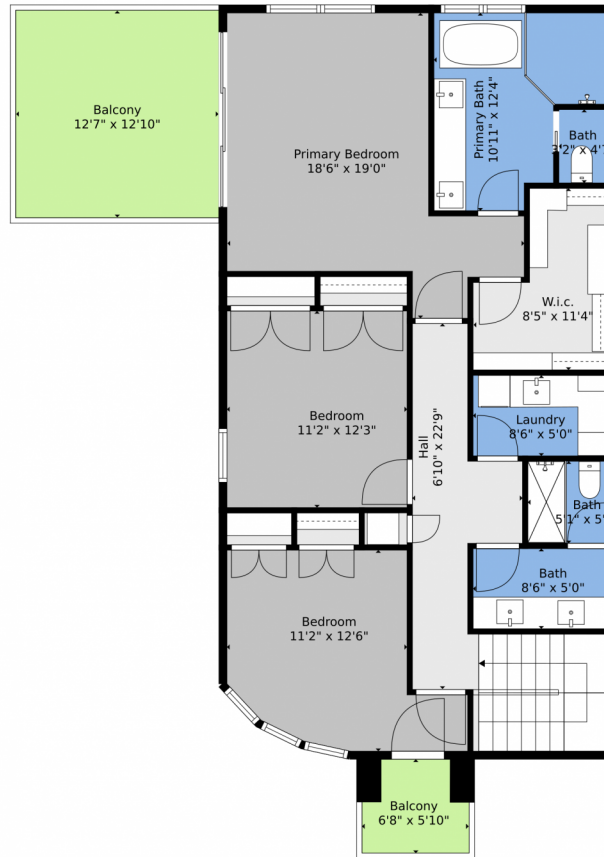
<https://www.StellerRealEstate.com>



Scan code
for more
property
details



667 South Downing Street, Denver, CO 80209 – Upper Level



TOTAL: 3063 sq. ft
BELOW GROUND: 660 sq. ft, FLOOR 2: 1318 sq. ft, FLOOR 3: 1085 sq. ft
EXCLUDED AREAS: ELECTRICAL ROOM: 188 sq. ft, FIREPLACE: 27 sq. ft, GARAGE: 485 sq. ft,
PORCH: 363 sq. ft, PATIO: 409 sq. ft, BALCONY: 196 sq. ft

Floor Plan Created By V1photos.com, Measurements Deamed Highly Reliable But Not Guaranteed.



Disclaimer: Sizes and Dimensions are Approximate, Actual May Vary.



Conrad Steller | Employing Broker

720-435-4454

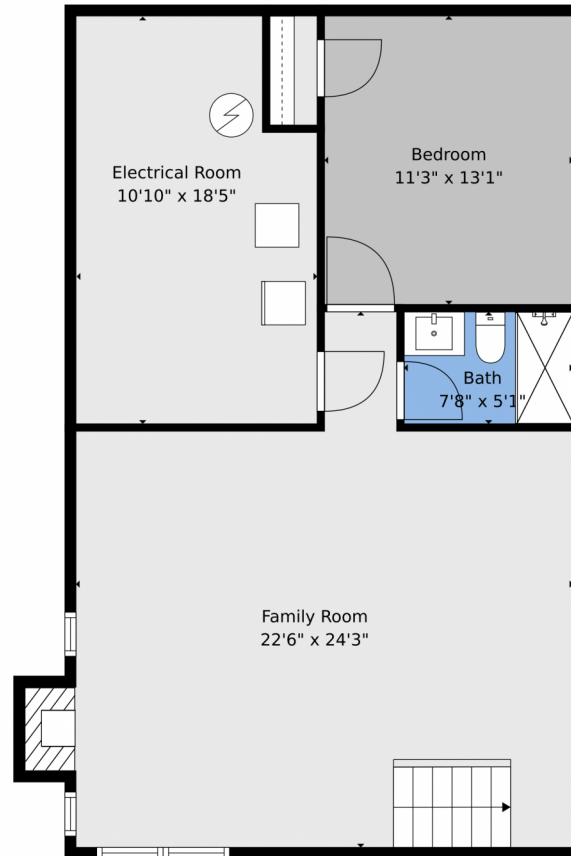
Conrad@StellerRealEstate.com

<https://www.StellerRealEstate.com>



Scan code
for more
property
details





TOTAL: 3063 sq. ft
BELOW GROUND: 660 sq. ft, FLOOR 2: 1318 sq. ft, FLOOR 3: 1085 sq. ft
EXCLUDED AREAS: ELECTRICAL ROOM: 188 sq. ft, FIREPLACE: 27 sq. ft, GARAGE: 485 sq. ft,
PORCH: 363 sq. ft, PATIO: 409 sq. ft, BALCONY: 196 sq. ft

Floor Plan Created By V1photos.com, Measurements Deamed Highly Reliable But Not Guaranteed.

Disclaimer: Sizes and Dimensions are Approximate, Actual May Vary.



Conrad Steller | Employing Broker

720-435-4454

Conrad@StellerRealEstate.com

<https://www.StellerRealEstate.com>



Scan code
for more
property
details



667 South Downing Street, Denver, CO 80209 – All Levels



TOTAL: 3063 sq. ft
 BELOW GROUND: 660 sq. ft, FLOOR 2: 1318 sq. ft, FLOOR 3: 1085 sq. ft
 EXCLUDED AREAS: ELECTRICAL ROOM: 188 sq. ft, FIREPLACE: 27 sq. ft, GARAGE: 485 sq. ft,
 PORCH: 363 sq. ft, PATIO: 409 sq. ft, BALCONY: 196 sq. ft

Floor Plan Created By V1photos.com, Measurements Deamed Highly Reliable But Not Guaranteed.



Disclaimer: Sizes and Dimensions are Approximate, Actual May Vary.



Conrad Steller | Employing Broker
 720-435-4454
 Conrad@StellerRealEstate.com
<https://www.StellerRealEstate.com>

