



956 Castle Ridge Road
 Golden, CO 80401
COMMUNITY: Riva Chase

MLS # 3830009
 PRICE \$2,100,000



Single Family



8479 SQFT



5 Beds



6 Baths



3 Car



2.44 Acre

PROPERTY DETAILS

Discover an exceptional executive estate in exclusive Riva Chase, just minutes from Denver. Nestled on nearly 2.5 acres with mature evergreens, this private home boasts 8,500 sq ft of luxurious mountain charm. Features include rich woodwork, hardwood floors, and elegant ceilings. The grand foyer leads to an executive office and an open floorplan ideal for entertaining, with a spacious living room and formal dining room that opens to a balcony. The chef's kitchen includes granite countertops and a Viking gas stove. The primary suite offers over 1,200 sq ft of luxury, complete with a fireplace and five-piece bath. The finished walkout basement features a bar, game room, and sauna. Enjoy the gated community's amenities like a stocked pond and park. Just 30 minutes from downtown Denver, experience the perfect blend of mountain living and city convenience.



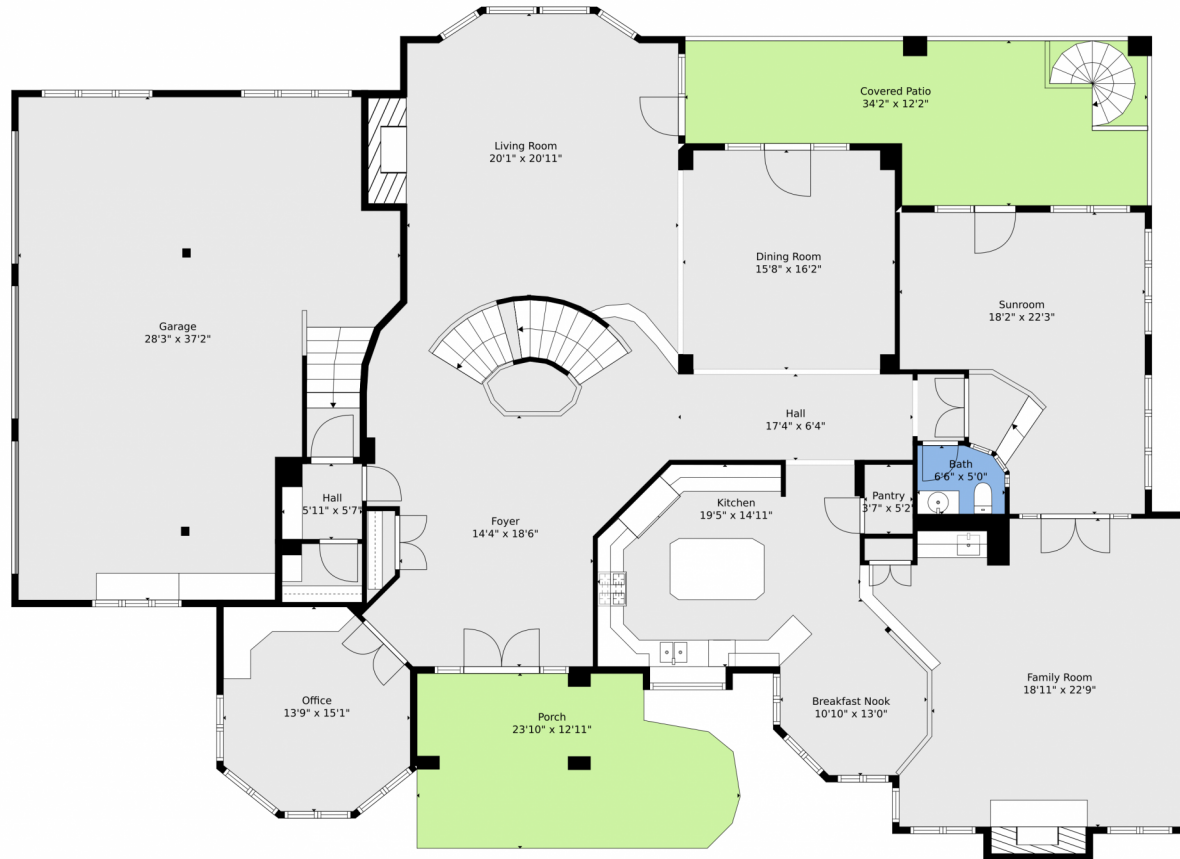
Blair Bryant | Designated Broker
 720-589-1740
 Blair@StellerRealEstate.com
<https://www.StellerRealEstate.com>



Scan code
 for more
 property
 details



956 Castle Ridge Road, Golden, CO 80401 – Main Level



TOTAL: 7963 sq. ft
BELOW GROUND: 2732 sq. ft, FLOOR 2: 2860 sq. ft, FLOOR 3: 2371 sq. ft
EXCLUDED AREAS: ELECTRICAL ROOM: 121 sq. ft, PATIO: 533 sq. ft, COVERED PATIO: 699 sq. ft,
FIREPLACE: 74 sq. ft, GARAGE: 896 sq. ft, PORCH: 273 sq. ft,
BAY WINDOW: 8 sq. ft, OPEN TO BELOW: 691 sq. ft

Floor Plan Created By V1photos.com, Measurements Deamed Highly Reliable But Not Guaranteed.



Disclaimer: Sizes and Dimensions are Approximate, Actual May Vary.



Blair Bryant | Designated Broker

720-589-1740

Blair@StellerRealEstate.com

<https://www.StellerRealEstate.com>



Scan code
for more
property
details



956 Castle Ridge Road, Golden, CO 80401 — Lower Level



TOTAL: 7963 sq. ft
BELOW GROUND: 2732 sq. ft, FLOOR 2: 2860 sq. ft, FLOOR 3: 2371 sq. ft
EXCLUDED AREAS: ELECTRICAL ROOM: 121 sq. ft, PATIO: 533 sq. ft, COVERED PATIO: 699 sq. ft,
FIREPLACE: 74 sq. ft, GARAGE: 896 sq. ft, PORCH: 273 sq. ft,
BAY WINDOW: 8 sq. ft, OPEN TO BELOW: 691 sq. ft

Floor Plan Created By V1photos.com, Measurements Deemed Highly Reliable But Not Guaranteed.



Disclaimer: Sizes and Dimensions are Approximate, Actual May Vary.



Blair Bryant | Designated Broker

720-589-1740

Blair@StellerRealEstate.com

<https://www.StellerRealEstate.com>



Scan code
for more
property
details



956 Castle Ridge Road, Golden, CO 80401 — Upper Level



TOTAL: 7963 sq. ft
BELOW GROUND: 2732 sq. ft, FLOOR 2: 2860 sq. ft, FLOOR 3: 2371 sq. ft
EXCLUDED AREAS: ELECTRICAL ROOM: 121 sq. ft, PATIO: 533 sq. ft, COVERED PATIO: 699 sq. ft,
FIREPLACE: 74 sq. ft, GARAGE: 896 sq. ft, PORCH: 273 sq. ft,
BAY WINDOW: 8 sq. ft, OPEN TO BELOW: 691 sq. ft

Floor Plan Created By V1photos.com, Measurements Deamed Highly Reliable But Not Guaranteed.



Disclaimer: Sizes and Dimensions are Approximate, Actual May Vary.



Blair Bryant | Designated Broker

720-589-1740

Blair@StellerRealEstate.com

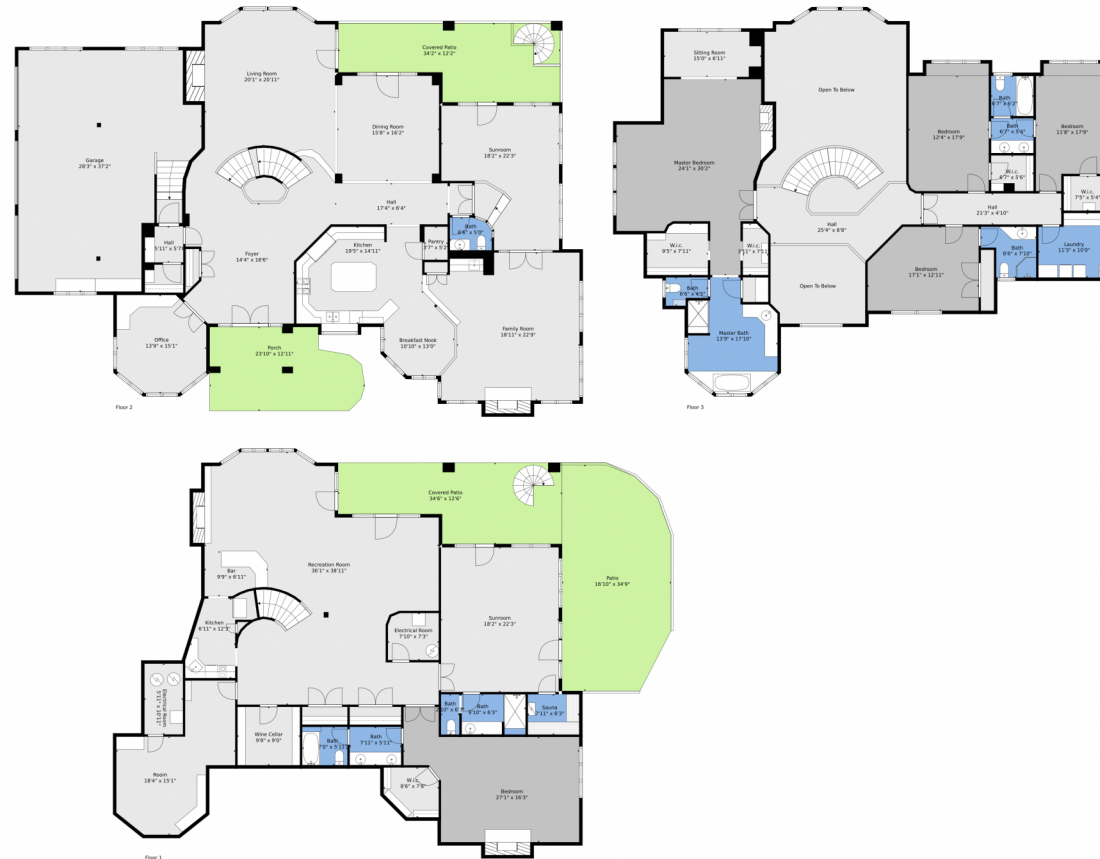
<https://www.StellerRealEstate.com>



Scan code
for more
property
details



956 Castle Ridge Road, Golden, CO 80401 — All Levels



TOTAL: 7963 sq. ft
 BELOW GROUND: 2732 sq. ft, FLOOR 2: 2860 sq. ft, FLOOR 3: 2371 sq. ft
 EXCLUDED AREAS: ELECTRICAL ROOM: 121 sq. ft, PATIO: 533 sq. ft, COVERED PATIO: 699 sq. ft,
 FIREPLACE: 74 sq. ft, GARAGE: 896 sq. ft, PORCH: 273 sq. ft,
 BAY WINDOW: 8 sq. ft, OPEN TO BELOW: 691 sq. ft

Floor Plan Created By V1photos.com. Measurements Deamed Highly Reliable But Not Guaranteed.



Disclaimer: Sizes and Dimensions are Approximate, Actual May Vary.



Blair Bryant | Designated Broker
 720-589-1740
 Blair@StellerRealEstate.com
<https://www.StellerRealEstate.com>

