

Orchard

10912 Memphis Court
Commerce City, CO 80022

COMMUNITY: Reunion

MLS # 9404152

PRICE \$630,000



Single Family



2717 SQFT



4 Beds



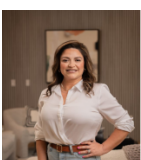
3/1 Baths



2 Car

PROPERTY DETAILS

Welcome to 10912 Memphis Ct, a beautiful 4-bedroom, 3.5-bathroom home featuring numerous upgrades. The main level has an open floor plan that connects the kitchen, living, and dining areas, ideal for entertaining, along with a half bath. Upstairs, enjoy a spacious primary suite, two additional bedrooms, and a laundry room. The finished basement includes a wet bar for customization. Upgrades include an extended kitchen island, tray ceilings, recessed lighting, and a covered patio. The home also has a tankless water heater, reverse osmosis system, and solar panels to be paid off at closing. Located near the Buffalo Run Golf Course, the HOA offers excellent amenities like a gym, basketball court, and pools. This move-in-ready home combines luxury and convenience.



Ashleigh Rangel

720-215-8609

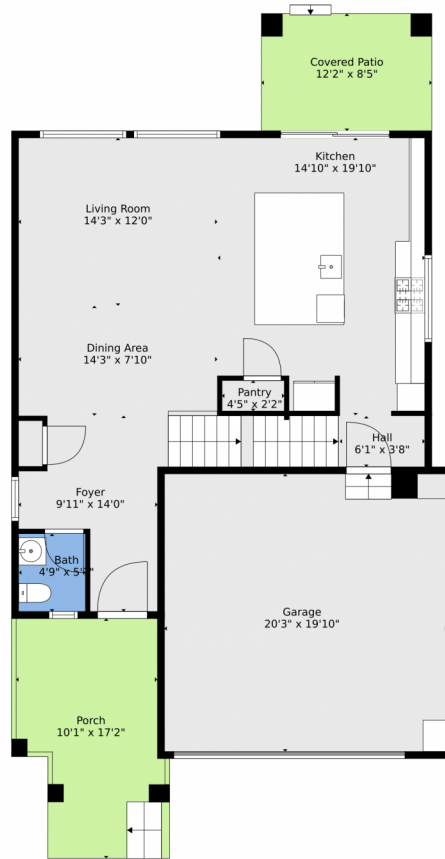
ashleigh.rangel@orchard.com



Scan code
for more
property
details



10912 Memphis Court, Commerce City, CO 80022 – Main



TOTAL: 2576 sq. ft
BELOW GROUND: 700 sq. ft, FLOOR 2: 787 sq. ft, FLOOR 3: 1089 sq. ft
EXCLUDED AREAS: ELECTRICAL ROOM: 20 sq. ft, COVERED PATIO: 102 sq. ft, PORCH: 166 sq. ft,
GARAGE: 402 sq. ft

Floor Plan Created By V1photos.com, Measurements Deamed Highly Reliable But Not Guaranteed.

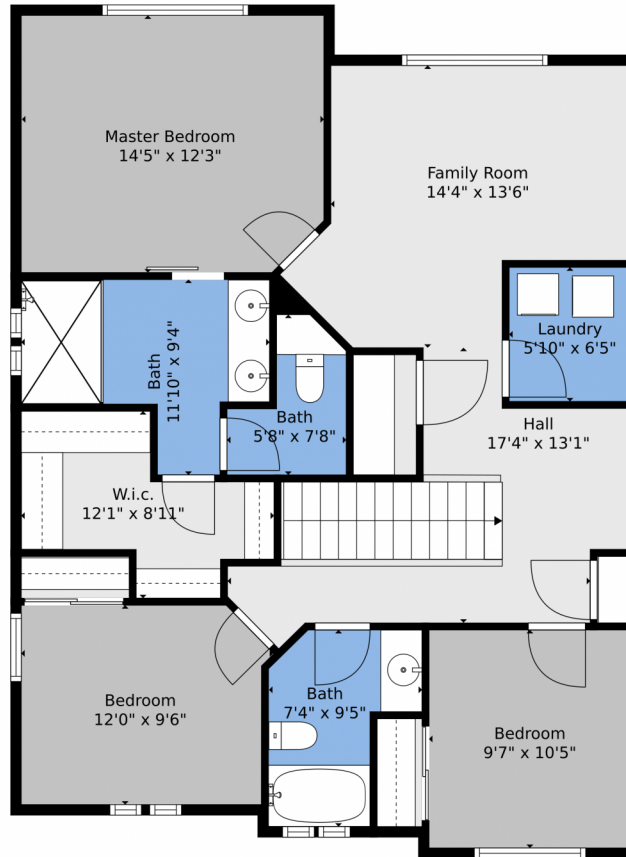
Disclaimer: Sizes and Dimensions are Approximate, Actual May Vary.



Ashleigh Rangel
720-215-8609
ashleigh.rangel@orchard.com



10912 Memphis Court, Commerce City, CO 80022 – 2nd Level



TOTAL: 2576 sq. ft
BELOW GROUND: 700 sq. ft, FLOOR 2: 787 sq. ft, FLOOR 3: 1089 sq. ft
EXCLUDED AREAS: ELECTRICAL ROOM: 20 sq. ft, COVERED PATIO: 102 sq. ft, PORCH: 166 sq. ft,
GARAGE: 402 sq. ft

Floor Plan Created By V1photos.com, Measurements Deamed Highly Reliable But Not Guaranteed.



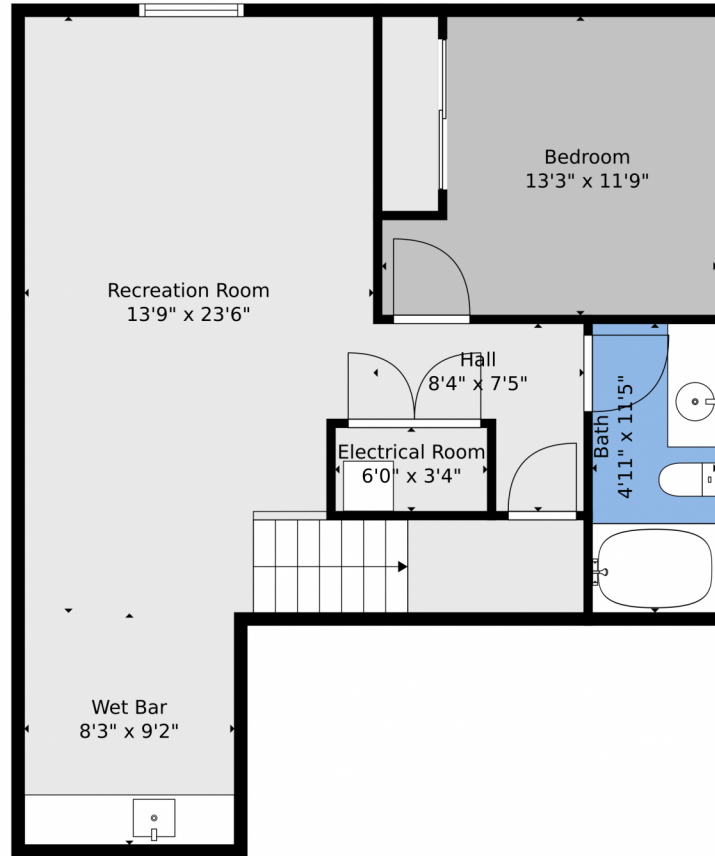
Disclaimer: Sizes and Dimensions are Approximate, Actual May Vary.



Ashleigh Rangel
720-215-8609
ashleigh.rangel@orchard.com



10912 Memphis Court, Commerce City, CO 80022 – Lower Level

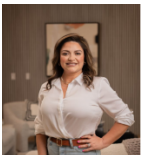


TOTAL: 2576 sq. ft
BELOW GROUND: 700 sq. ft, FLOOR 2: 787 sq. ft, FLOOR 3: 1089 sq. ft
EXCLUDED AREAS: ELECTRICAL ROOM: 20 sq. ft, COVERED PATIO: 102 sq. ft, PORCH: 166 sq. ft,
GARAGE: 402 sq. ft

Floor Plan Created By V1photos.com, Measurements Deamed Highly Reliable But Not Guaranteed.



Disclaimer: Sizes and Dimensions are Approximate, Actual May Vary.



Ashleigh Rangel
720-215-8609
ashleigh.rangel@orchard.com



10912 Memphis Court, Commerce City, CO 80022 – All Levels



TOTAL: 2576 sq. ft
 BELOW GROUND: 700 sq. ft, FLOOR 2: 787 sq. ft, FLOOR 3: 1089 sq. ft
 EXCLUDED AREAS: ELECTRICAL ROOM: 20 sq. ft, COVERED PATIO: 102 sq. ft, PORCH: 166 sq. ft,
 GARAGE: 402 sq. ft

Floor Plan Created By V1photos.com. Measurements Deamed Highly Reliable But Not Guaranteed.



Disclaimer: Sizes and Dimensions are Approximate, Actual May Vary.



Ashleigh Rangel
 720-215-8609
 ashleigh.rangel@orchard.com



Scan code
 for more
 property
 details

