



floorplan_single_1



Single Family



3327 SQFT



5 Beds



3 Baths



2 Car



0.14 Acre



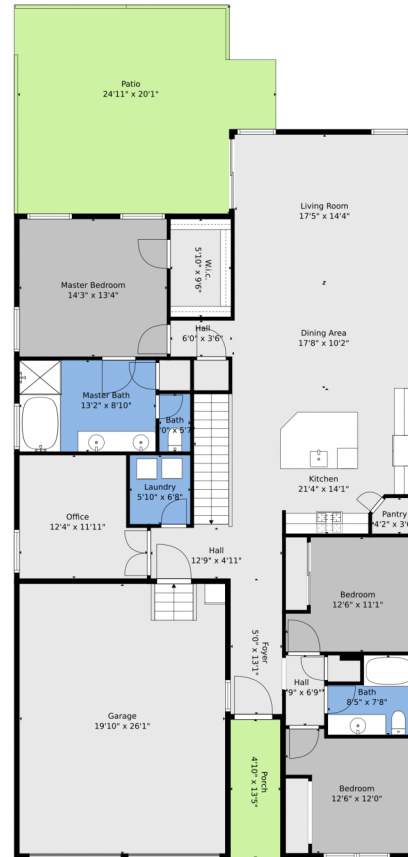
Susan Cary
303-903-4114
susan.cary@madisonprops.com



Scan code
for more
property
details



3946 Forever Circle, Castle Rock, CO 80109 – Main



TOTAL: 2952 sq. ft
BELOW GROUND: 1077 sq. ft, FLOOR 2: 1875 sq. ft
EXCLUDED AREAS: ELECTRICAL ROOM: 51 sq. ft, PORCH: 65 sq. ft, PATIO: 451 sq. ft,
GARAGE: 520 sq. ft

Floor Plan Created By V1photos.com, Measurements Deamed Highly Reliable But Not Guaranteed.



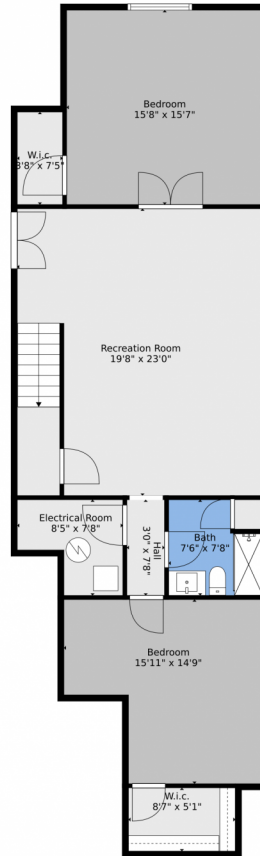
Disclaimer: Sizes and Dimensions are Approximate, Actual May Vary.



Susan Cary
303-903-4114
susan.cary@madisonprops.com



3946 Forever Circle, Castle Rock, CO 80109 – Basement



TOTAL: 2952 sq. ft
BELOW GROUND: 1077 sq. ft, FLOOR 2: 1875 sq. ft
EXCLUDED AREAS: ELECTRICAL ROOM: 51 sq. ft, PORCH: 65 sq. ft, PATIO: 451 sq. ft,
GARAGE: 520 sq. ft

Floor Plan Created By V1photos.com. Measurements Deamed Highly Reliable But Not Guaranteed.



Disclaimer: Sizes and Dimensions are Approximate, Actual May Vary.



Susan Cary
303-903-4114
susan.cary@madisonprops.com



3946 Forever Circle, Castle Rock, CO 80109 – All Levels



TOTAL: 2952 sq. ft
BELOW GROUND: 1077 sq. ft, FLOOR 2: 1875 sq. ft
EXCLUDED AREAS: ELECTRICAL ROOM: 51 sq. ft, PORCH: 65 sq. ft, PATIO: 451 sq. ft,
GARAGE: 520 sq. ft

Floor Plan Created By V1photos.com, Measurements Deamed Highly Reliable But Not Guaranteed.



Disclaimer: Sizes and Dimensions are Approximate, Actual May Vary.



Susan Cary
303-903-4114
susan.cary@madisonprops.com

