



Single Family



2599 SQFT



Maria Dellota
970-215-1013
mdellota@windermere.com



Scan code
for more
property
details





TOTAL: 2501 sq. ft
BELOW GROUND: 929 sq. ft, FLOOR 2: 1059 sq. ft, FLOOR 3: 513 sq. ft
EXCLUDED AREAS: STORAGE: 130 sq. ft, GARAGE: 387 sq. ft, PATIO: 257 sq. ft,
OPEN TO BELOW: 447 sq. ft

Floor Plan Created By V1photos.com, Measurements Deamed Highly Reliable But Not Guaranteed.



Disclaimer: Sizes and Dimensions are Approximate, Actual May Vary.

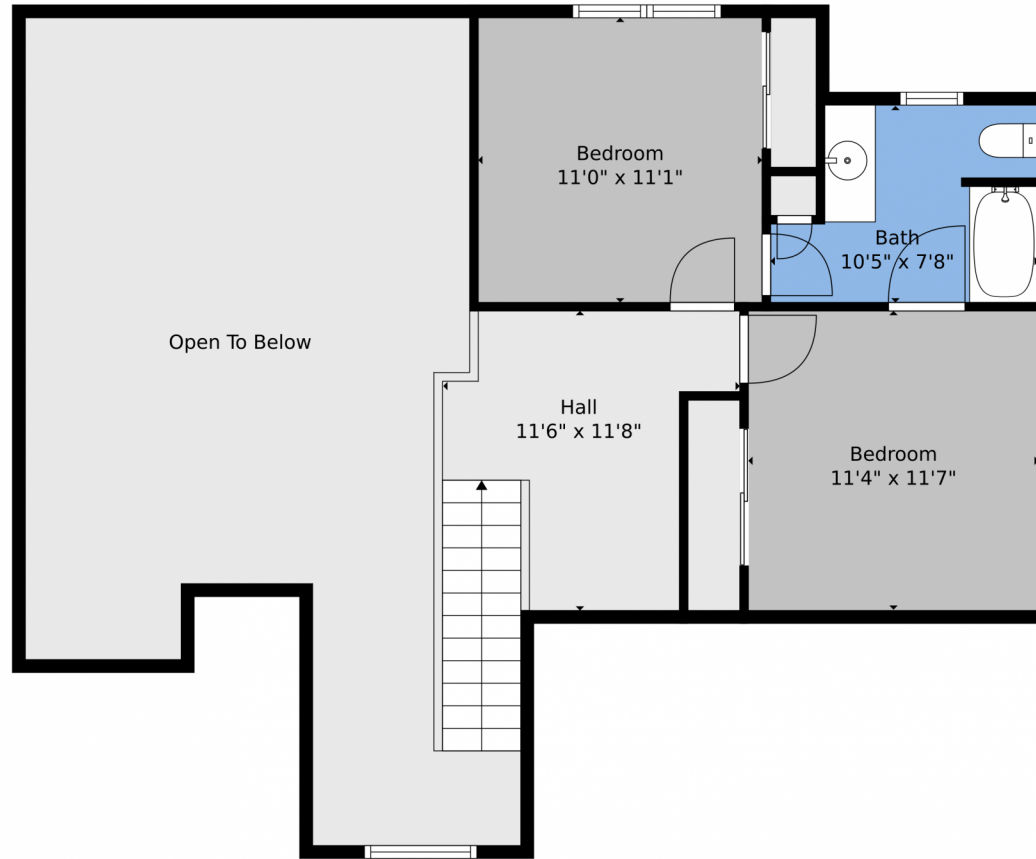


Maria Dellota
970-215-1013
mdellota@windermere.com



Scan code
for more
property
details

6355 Ozark Avenue, Loveland, CO 80538 – 2nd Level



TOTAL: 2501 sq. ft
BELOW GROUND: 929 sq. ft, FLOOR 2: 1059 sq. ft, FLOOR 3: 513 sq. ft
EXCLUDED AREAS: STORAGE: 130 sq. ft, GARAGE: 387 sq. ft, PATIO: 257 sq. ft,
OPEN TO BELOW: 447 sq. ft

Floor Plan Created By V1photos.com, Measurements Deamed Highly Reliable But Not Guaranteed.



Disclaimer: Sizes and Dimensions are Approximate, Actual May Vary.

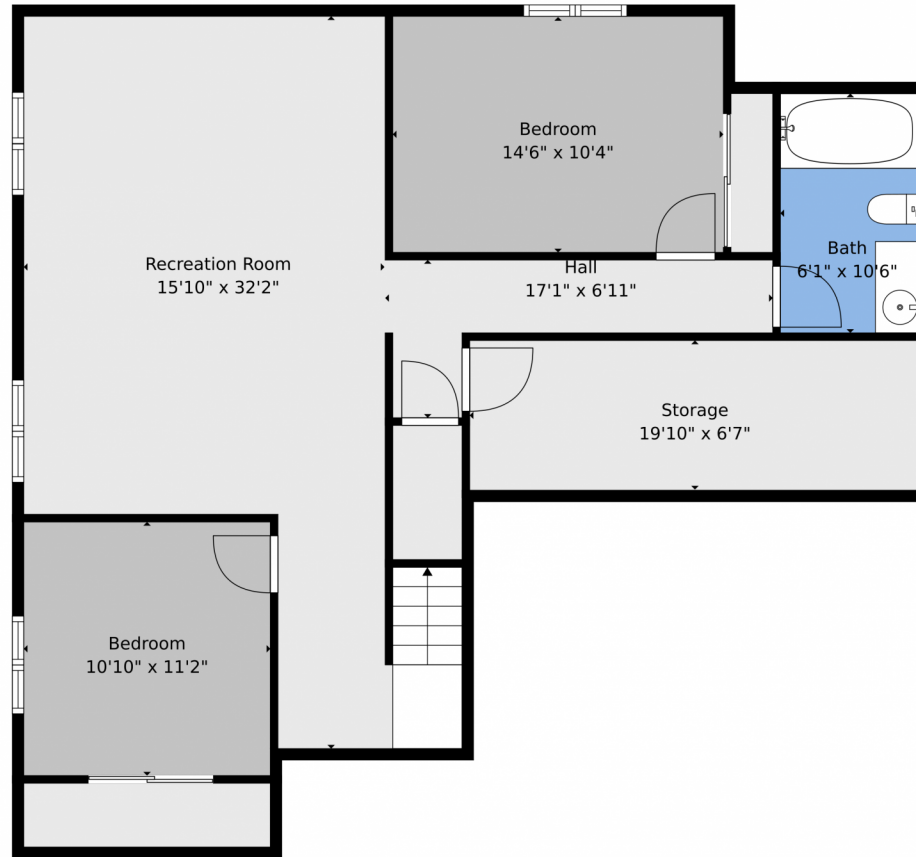


Maria Dellota
970-215-1013
mdellota@windermere.com



Scan code
for more
property
details

6355 Ozark Avenue, Loveland, CO 80538 – Lower Level



TOTAL: 2501 sq. ft
BELOW GROUND: 929 sq. ft, FLOOR 2: 1059 sq. ft, FLOOR 3: 513 sq. ft
EXCLUDED AREAS: STORAGE: 130 sq. ft, GARAGE: 387 sq. ft, PATIO: 257 sq. ft,
OPEN TO BELOW: 447 sq. ft

Floor Plan Created By V1photos.com, Measurements Deamed Highly Reliable But Not Guaranteed.



Disclaimer: Sizes and Dimensions are Approximate, Actual May Vary.



Maria Dellota
970-215-1013
mdellota@windermere.com



6355 Ozark Avenue, Loveland, CO 80538 – All Levels



TOTAL: 2501 sq. ft
BELOW GROUND: 929 sq. ft, FLOOR 2: 1059 sq. ft, FLOOR 3: 513 sq. ft
EXCLUDED AREAS: STORAGE: 130 sq. ft, GARAGE: 387 sq. ft, PATIO: 257 sq. ft,
OPEN TO BELOW: 447 sq. ft

Floor Plan Created By V1photos.com, Measurements Deamed Highly Reliable But Not Guaranteed.



Disclaimer: Sizes and Dimensions are Approximate, Actual May Vary.



Maria Dellota
970-215-1013
mdellota@windermere.com

