



4976 Borland Lane  
Palm Beach Gardens, FL 33418

MLS  
# RX11032928  
PRICE \$879,900

## Lakefront End Unit with First Floor Owner's Suite



Townhouse 3015 SQFT 4 Beds 3/1 Baths 2 Car

## PROPERTY DETAILS

Lakefront End Unit Wave Model in Pointe Midtown. Quality Built in 2021 this CBS construction w/steel re-enforced concrete foundation, Impact windows and Doors. Energy Rated and Smart technology systems. Owners Suite is ground floor in this Wave model. Featuring 4 Bed 3.5 Bathrooms spread over 2558 SqFt under air. Upgrades include Kitchen cabinets to ceiling, Quartz Counters, Gourmet Kitchen appliance package, LVP Shaw Coretec wide plank flooring throughout. Surround Sound Speakers in Fam Rm. Soaring 9'6" ceilings on both stories, LED lighting. Enjoy the Walkability of Pointe Midtown's location. Fresh Market, Restaurants, Shopping and Fitness options. Convenient to 95, Turnpike and PBI Airport. HOA includes property insurance, Cable TV, Peninsula Club Pool, Security monitoring, Pest Control and Landscape Maintenance.



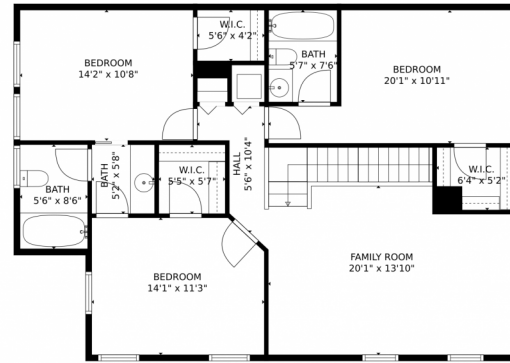
**Chris Dyer**  
301-343-9279  
chris@ebstonerealty.com  
<https://www.EbStoneRealty.com>



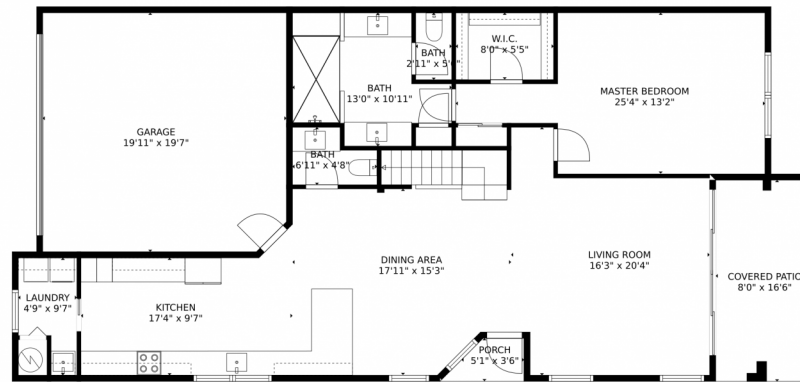
Scan code  
for more  
property  
details



# 4976 Borland Lane, Palm Beach Gardens, FL 33418 – All Levels



FLOOR 2



FLOOR 1

**TOTAL: 2361 sq. ft**  
FLOOR 1: 1271 sq. ft, FLOOR 2: 1090 sq. ft  
EXCLUDED AREAS: GARAGE: 387 sq. ft, PORCH: 18 sq. ft, COVERED PATIO: 132 sq. ft  
FLOOR PLAN CREATED BY CUBICASA APP. MEASUREMENTS DEEMED HIGHLY RELIABLE BUT NOT GUARANTEED.

Disclaimer: Sizes and Dimensions are Approximate, Actual May Vary.



**Chris Dyer**  
301-343-9279  
chris@ebstonerealty.com  
<https://www.EbStoneRealty.com>



Scan code  
for more  
property  
details