



16851 E Mansfield Circle  
Aurora, CO 80013  
COMMUNITY: Mission Viejo

MLS # 3436576  
PRICE \$450,000



Single Family



2240 SQFT



2 Beds



2 Baths



2 Car



0.15 Acre

## PROPERTY DETAILS

Welcome to this HOA-free, two-bedroom, two-bathroom ranch-style home in Mission Viejo! This upgraded home features a new roof, fresh paint, luxury vinyl plank flooring, and new carpet. The spacious living room boasts a wood-burning fireplace and ample natural light, ideal for entertaining. The gourmet kitchen offers plenty of cabinetry and countertops, with all appliances included for a move-in ready experience. The main level includes the primary bedroom with an en-suite bathroom and walk-in closet, plus a second bedroom and bathroom. An unfinished basement awaits your creative ideas, perfect for a game room or retreat. Enjoy the enclosed sunroom and a private backyard oasis with mature trees. Located near Cherry Creek Schools and Mission Viejo Park, with easy access to I-225, I-25, and local amenities. Welcome home!

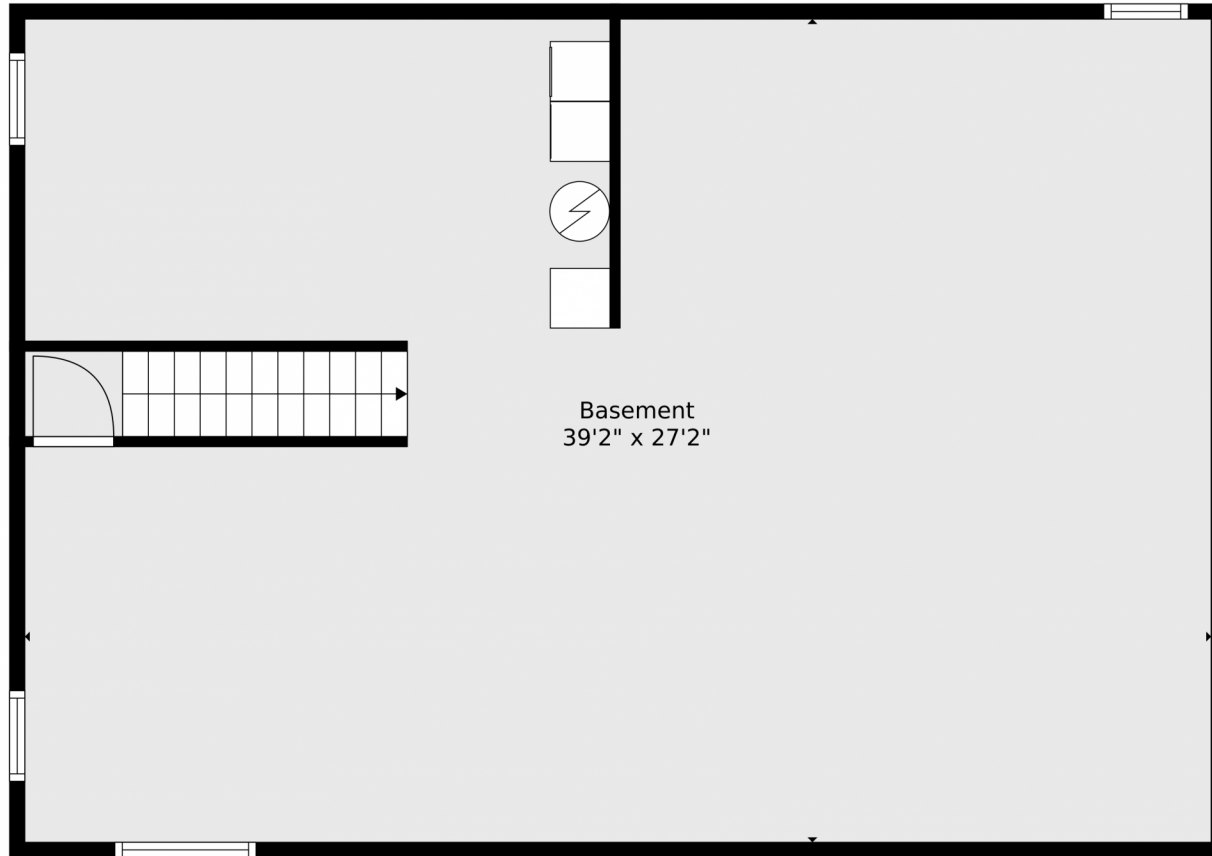


**Tatyana Sturm**  
720-350-5909  
tatyana@exitrealtydtc.com  
<https://thestorckteam.com>



Scan code  
for more  
property  
details





**TOTAL: 1066 sq. ft**  
BELOW GROUND: 0 sq. ft, FLOOR 2: 1066 sq. ft  
EXCLUDED AREAS: BASEMENT: 1063 sq. ft, SCREENED PORCH: 130 sq. ft, FIREPLACE: 9 sq. ft

Floor Plan Created By V1photos.com. Measurements Deamed Highly Reliable But Not Guaranteed.

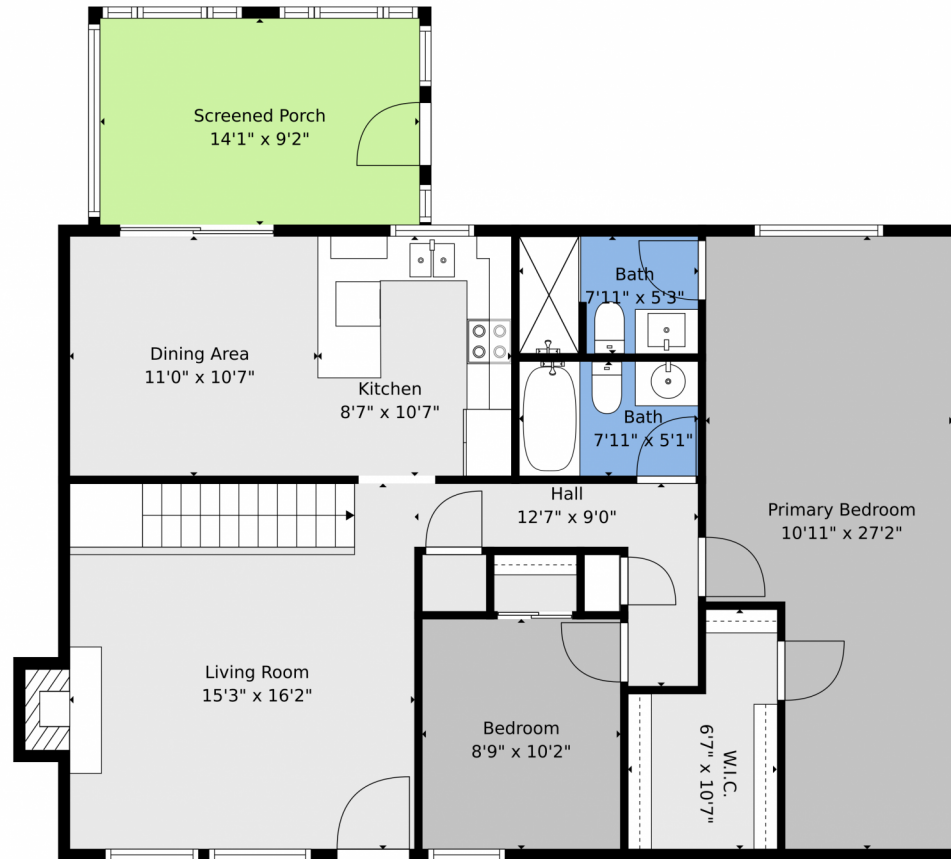


Disclaimer: Sizes and Dimensions are Approximate, Actual May Vary.



**Tatyana Sturm**  
720-350-5909  
tatyana@exitrealtydtc.com  
<https://thestorckteam.com>





**TOTAL: 1066 sq. ft**  
BELOW GROUND: 0 sq. ft, FLOOR 2: 1066 sq. ft  
EXCLUDED AREAS: BASEMENT: 1063 sq. ft, SCREENED PORCH: 130 sq. ft, FIREPLACE: 9 sq. ft  
Floor Plan Created By V1photos.com, Measurements Deamed Highly Reliable But Not Guaranteed.

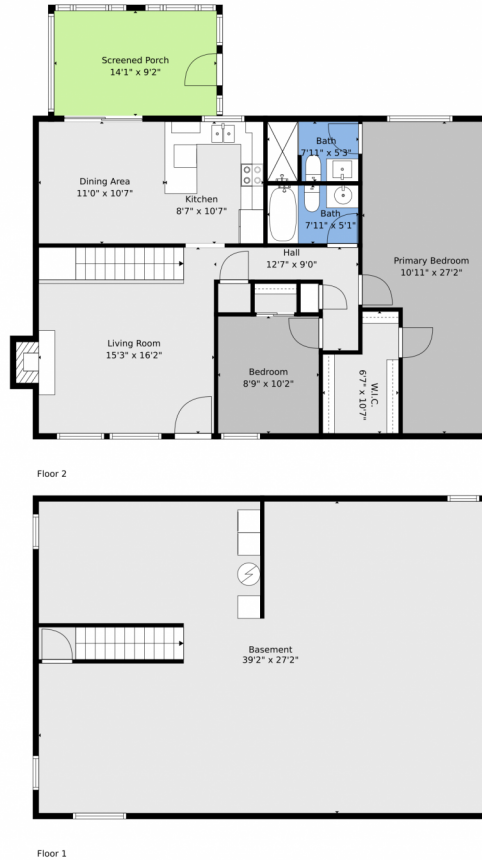


Disclaimer: Sizes and Dimensions are Approximate, Actual May Vary.



**Tatyana Sturm**  
720-350-5909  
tatyana@exitrealtydtc.com  
<https://thestorckteam.com>





**TOTAL: 1066 sq. ft**  
BELOW GROUND: 0 sq. ft, FLOOR 2: 1066 sq. ft  
EXCLUDED AREAS: BASEMENT: 1063 sq. ft, SCREENED PORCH: 130 sq. ft, FIREPLACE: 9 sq. ft

Floor Plan Created By V1photos.com, Measurements Deamed Highly Reliable But Not Guaranteed.



Disclaimer: Sizes and Dimensions are Approximate, Actual May Vary.



**Tatyana Sturm**  
720-350-5909  
tatyana@exitrealtydtc.com  
<https://thestorckteam.com>

