



2903 West Long Circle  
 Littleton, CO 80120  
 COMMUNITY: Southpark

PRICE \$525,000



Condominium



1830 SQFT



2 Beds



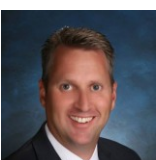
2/1 Baths



2 Car

## PROPERTY DETAILS

Stunning remodeled 2-bedroom, 3-bath Townhome in Southpark II. This home features a fully updated kitchen with newer cabinets, slab granite counters, and stainless steel appliances, including a double oven. The main level boasts hardwood floors and a gas fireplace. The upper floor includes a spacious Primary suite with an updated bath featuring a walk-in shower, plus a guest bath with modern fixtures. There's also a second bedroom and a versatile loft ideal for an office or workout space. This end unit has an oversized 2-car garage with electric charging. New carpet in 2025, exterior paint, and roof in 2024. Conveniently located near the light rail, South Platte River Greenway Trail, and Aspen Grove shopping.



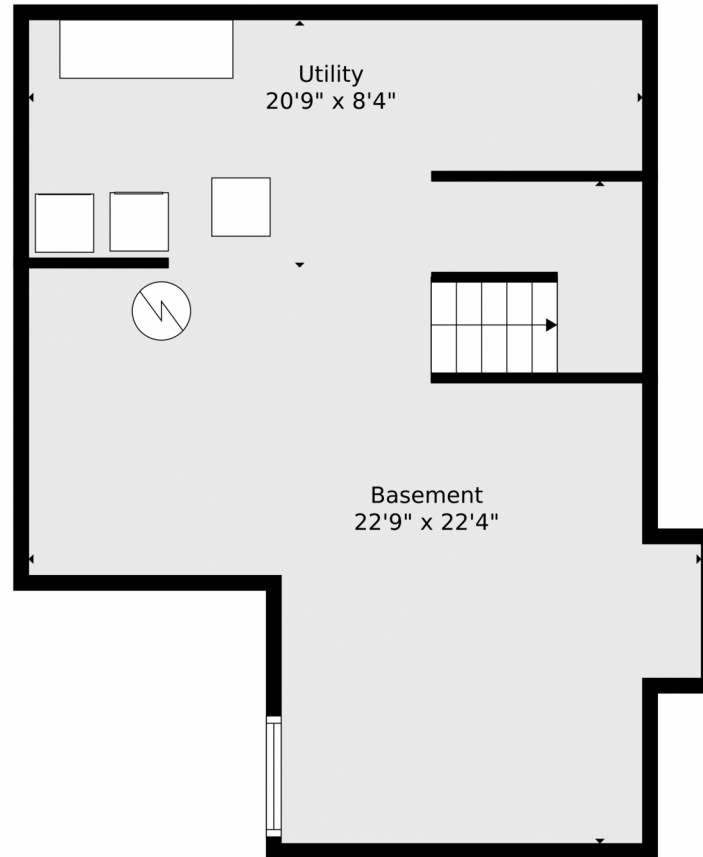
**Greg Dach**  
 303-525-9006  
 gregdach@remax.net



Scan code  
 for more  
 property  
 details



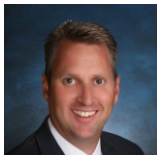
2903 West Long Circle, Littleton, CO 80120 – Basement



**TOTAL: 1248 sq. ft**  
BELOW GROUND: 0 sq. ft, FLOOR 2: 514 sq. ft, FLOOR 3: 734 sq. ft  
EXCLUDED AREAS: UTILITY: 153 sq. ft, BASEMENT: 356 sq. ft, GARAGE: 404 sq. ft,  
FIREPLACE: 10 sq. ft, OPEN TO BELOW: 188 sq. ft

Floor Plan Created By V1photos.com, Measurements Deamed Highly Reliable But Not Guaranteed.

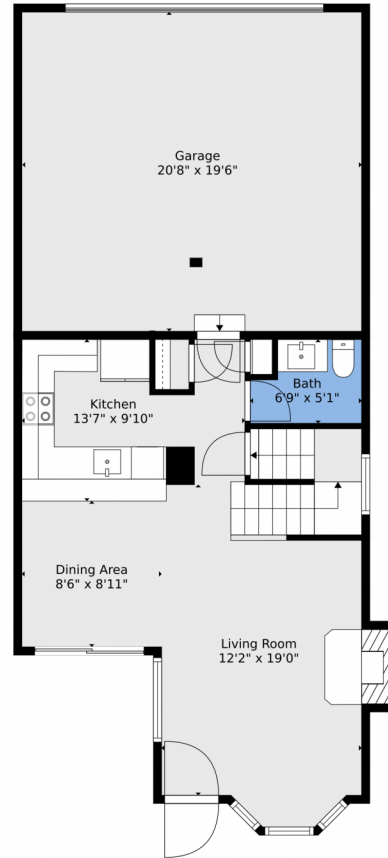
Disclaimer: Sizes and Dimensions are Approximate, Actual May Vary.



**Greg Dach**  
303-525-9006  
gregdach@remax.net



2903 West Long Circle, Littleton, CO 80120 – Main



**TOTAL: 1248 sq. ft**  
BELOW GROUND: 0 sq. ft, FLOOR 2: 514 sq. ft, FLOOR 3: 734 sq. ft  
EXCLUDED AREAS: UTILITY: 153 sq. ft, BASEMENT: 356 sq. ft, GARAGE: 404 sq. ft,  
FIREPLACE: 10 sq. ft, OPEN TO BELOW: 188 sq. ft

Floor Plan Created By V1photos.com, Measurements Deamed Highly Reliable But Not Guaranteed.



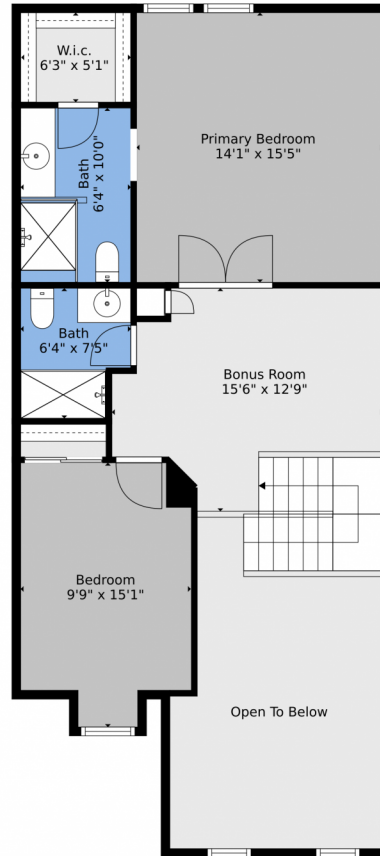
Disclaimer: Sizes and Dimensions are Approximate, Actual May Vary.



**Greg Dach**  
303-525-9006  
gregdach@remax.net



# 2903 West Long Circle, Littleton, CO 80120 – 2nd Level



**TOTAL: 1248 sq. ft**  
BELOW GROUND: 0 sq. ft, FLOOR 2: 514 sq. ft, FLOOR 3: 734 sq. ft  
EXCLUDED AREAS: UTILITY: 153 sq. ft, BASEMENT: 356 sq. ft, GARAGE: 404 sq. ft,  
FIREPLACE: 10 sq. ft, OPEN TO BELOW: 188 sq. ft

Floor Plan Created By V1photos.com, Measurements Deamed Highly Reliable But Not Guaranteed.



Disclaimer: Sizes and Dimensions are Approximate, Actual May Vary.



**Greg Dach**  
303-525-9006  
gregdach@remax.net



# 2903 West Long Circle, Littleton, CO 80120 – All Levels

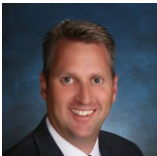


**TOTAL: 1248 sq. ft**  
BELOW GROUND: 0 sq. ft, FLOOR 2: 514 sq. ft, FLOOR 3: 734 sq. ft  
EXCLUDED AREAS: UTILITY: 153 sq. ft, BASEMENT: 356 sq. ft, GARAGE: 404 sq. ft,  
FIREPLACE: 10 sq. ft, OPEN TO BELOW: 188 sq. ft

Floor Plan Created By V1photos.com, Measurements Deamed Highly Reliable But Not Guaranteed.



Disclaimer: Sizes and Dimensions are Approximate, Actual May Vary.



**Greg Dach**  
303-525-9006  
gregdach@remax.net



Scan code  
for more  
property  
details

