


 Single Family

 1647 SQFT

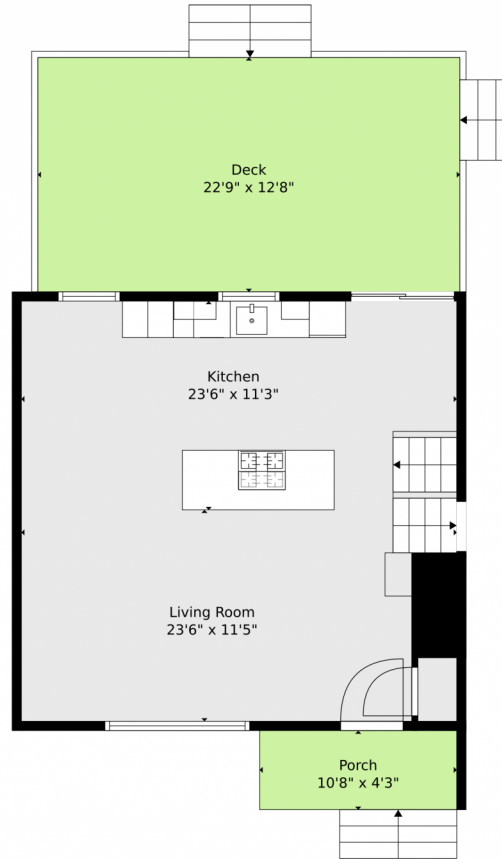
 3 Beds

 2/1 Baths



Taylor Haas
 303-665-7368
 taylorh@coloradorpm.com
<https://www.coloradorpm.com/available-rental-properties-denver>





TOTAL: 2068 sq. ft
BELOW GROUND: 480 sq. ft, FLOOR 2: 442 sq. ft, FLOOR 3: 533 sq. ft, FLOOR 4: 613 sq. ft
EXCLUDED AREAS: ELECTRICAL ROOM: 53 sq. ft, GARAGE: 378 sq. ft, DECK: 288 sq. ft,
PORCH: 45 sq. ft

Floor Plan Created By V1photos.com, Measurements Deamed Highly Reliable But Not Guaranteed.



Disclaimer: Sizes and Dimensions are Approximate, Actual May Vary.

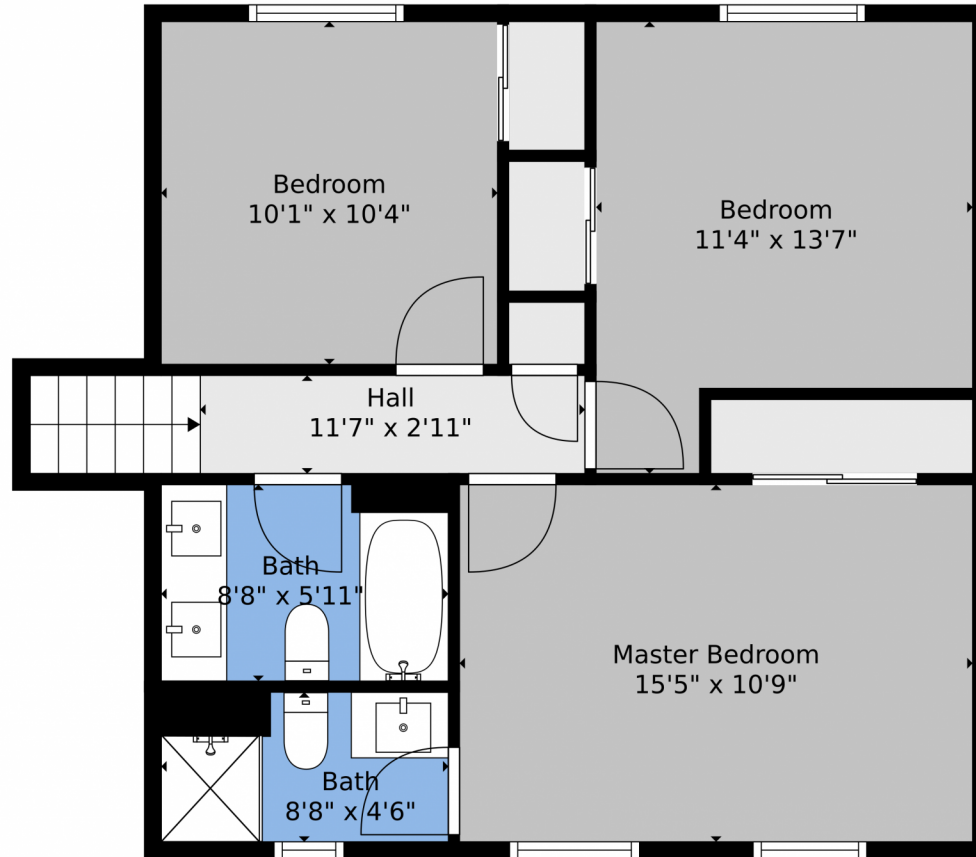


Taylor Haas
303-665-7368
taylorh@coloradorpm.com
<https://www.coloradorpm.com/available-rental-properties-denver>



Scan code
for more
property
details





TOTAL: 2068 sq. ft
BELOW GROUND: 480 sq. ft, FLOOR 2: 442 sq. ft, FLOOR 3: 533 sq. ft, FLOOR 4: 613 sq. ft
EXCLUDED AREAS: ELECTRICAL ROOM: 53 sq. ft, GARAGE: 378 sq. ft, DECK: 288 sq. ft,
PORCH: 45 sq. ft

Floor Plan Created By V1photos.com, Measurements Deamed Highly Reliable But Not Guaranteed.



Disclaimer: Sizes and Dimensions are Approximate, Actual May Vary.



Taylor Haas

303-665-7368

taylorh@coloradorpm.com

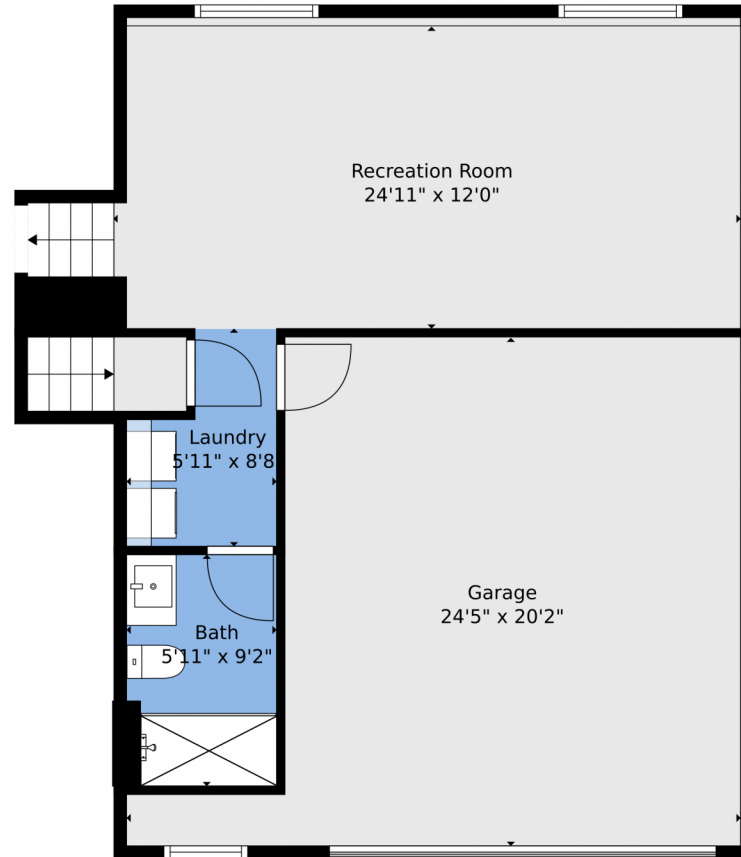
<https://www.coloradorpm.com/available-rental-properties-denver>



Scan code
for more
property
details



13795 West 68th Drive, Arvada, CO 80004 – Lower Level



TOTAL: 2068 sq. ft
BELOW GROUND: 480 sq. ft, FLOOR 2: 442 sq. ft, FLOOR 3: 533 sq. ft, FLOOR 4: 613 sq. ft
EXCLUDED AREAS: ELECTRICAL ROOM: 53 sq. ft, GARAGE: 378 sq. ft, DECK: 288 sq. ft,
PORCH: 45 sq. ft

Floor Plan Created By V1photos.com, Measurements Deamed Highly Reliable But Not Guaranteed.



Disclaimer: Sizes and Dimensions are Approximate, Actual May Vary.



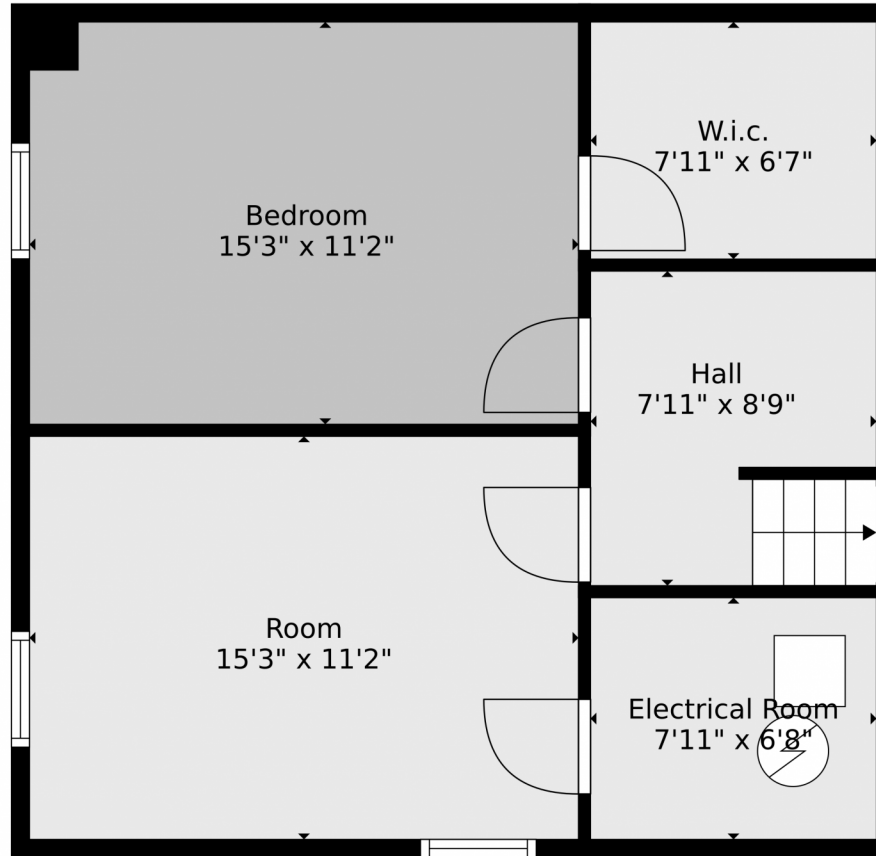
Taylor Haas
303-665-7368
taylorh@coloradorpm.com
<https://www.coloradorpm.com/available-rental-properties-denver>



Scan code
for more
property
details



13795 West 68th Drive, Arvada, CO 80004 – Basement



TOTAL: 2068 sq. ft
BELOW GROUND: 480 sq. ft, FLOOR 2: 442 sq. ft, FLOOR 3: 533 sq. ft, FLOOR 4: 613 sq. ft
EXCLUDED AREAS: ELECTRICAL ROOM: 53 sq. ft, GARAGE: 378 sq. ft, DECK: 288 sq. ft,
PORCH: 45 sq. ft

Floor Plan Created By V1photos.com. Measurements Deamed Highly Reliable But Not Guaranteed.



Disclaimer: Sizes and Dimensions are Approximate, Actual May Vary.



Taylor Haas

303-665-7368

taylorh@coloradorpm.com

<https://www.coloradorpm.com/available-rental-properties-denver>



Scan code
for more
property
details



13795 West 68th Drive, Arvada, CO 80004 – All Levels



TOTAL: 2068 sq. ft
BELOW GROUND: 480 sq. ft, FLOOR 2: 442 sq. ft, FLOOR 3: 533 sq. ft, FLOOR 4: 613 sq. ft
EXCLUDED AREAS: ELECTRICAL ROOM: 53 sq. ft, GARAGE: 378 sq. ft, DECK: 288 sq. ft, PORCH: 45 sq. ft

Floor Plan Created By V1photos.com, Measurements Deamed Highly Reliable But Not Guaranteed.



Disclaimer: Sizes and Dimensions are Approximate, Actual May Vary.



Taylor Haas

303-665-7368

taylorh@coloradorpm.com

<https://www.coloradorpm.com/available-rental-properties-denver>



Scan code
for more
property
details

