



3881 White Rose Street
 Castle Rock, CO 80104
 COMMUNITY: Terrain

MLS # 9311445
 PRICE \$665,000



floorplan_single_1



Single Family
 3688 SQFT
 3 Beds
 2/1 Baths
 2 Car
 0.14 Acre

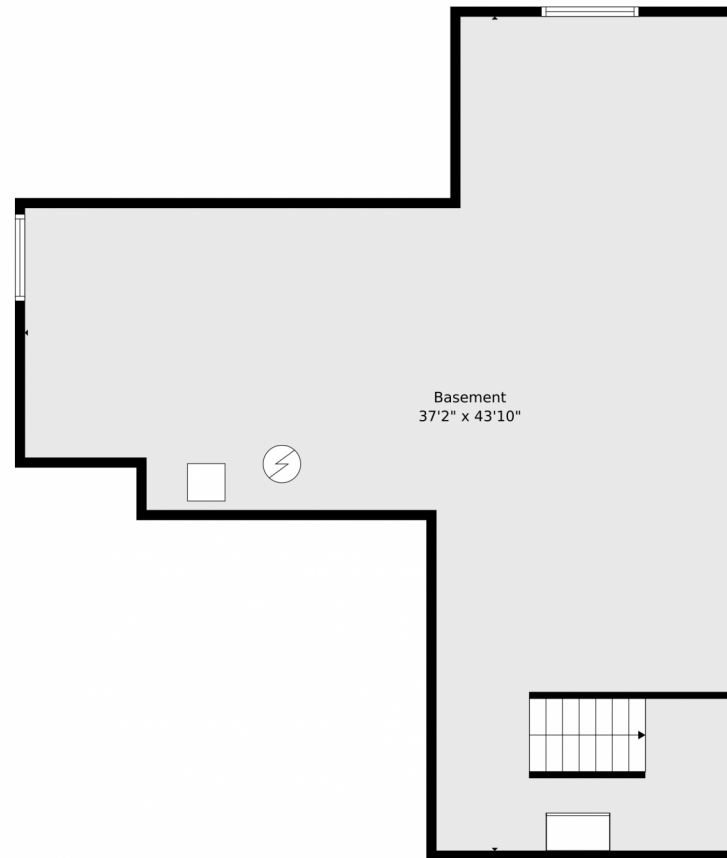
PROPERTY DETAILS

Welcome to this stunning 3-bedroom, 3-bath home in Castle Rock's Terrain community! Featuring a gourmet kitchen with a large granite island, stainless steel appliances, double ovens, and soft-close drawers, this home is perfect for gatherings. The bright adjacent room is ideal for dining or relaxing. Step outside to a spacious covered patio with serene views and no neighboring houses for added privacy. The upstairs layout includes a conveniently located laundry room near all bedrooms. The primary bedroom offers a spa-like en-suite with a walk-in shower. Just five minutes from downtown Castle Rock, enjoy peaceful living with access to grocery stores, dining, and nearby trails. Experience luxury living in an ideal location!



Michelle Cuscaden
 303-250-3786
 m.cuscaden30@gmail.com
<https://michellecuscaden.myrealtyonegroup.com/>





TOTAL: 2394 sq. ft
BELOW GROUND: 0 sq. ft, FLOOR 2: 1057 sq. ft, FLOOR 3: 1337 sq. ft
EXCLUDED AREAS: BASEMENT: 996 sq. ft, GARAGE: 505 sq. ft
Floor Plan Created By V1photos.com, Measurements Deamed Highly Reliable But Not Guaranteed.

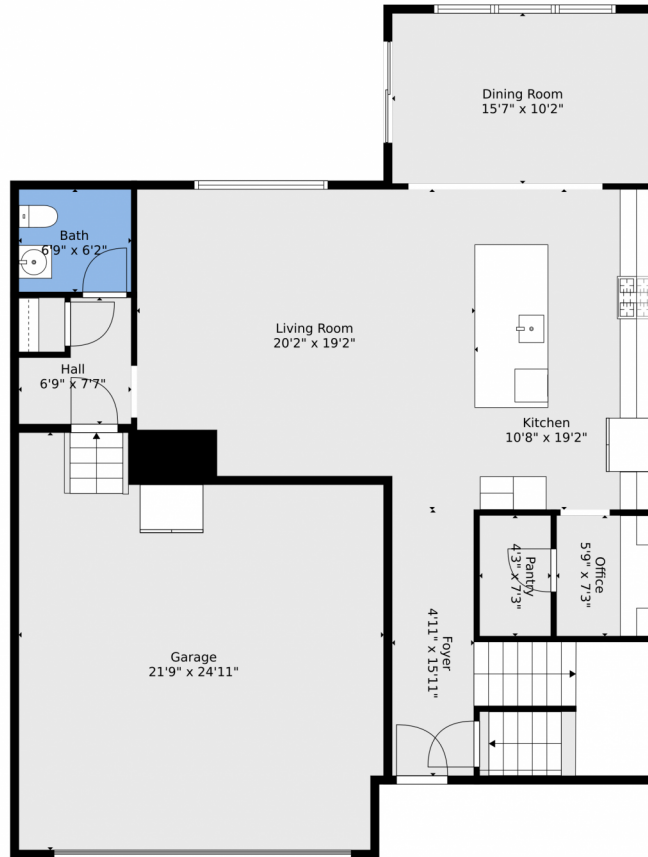


Disclaimer: Sizes and Dimensions are Approximate, Actual May Vary.



Michelle Cuscaden
303-250-3786
m.cuscaden30@gmail.com
<https://michellecuscaden.myrealtyonegroup.com/>





TOTAL: 2394 sq. ft
BELOW GROUND: 0 sq. ft, FLOOR 2: 1057 sq. ft, FLOOR 3: 1337 sq. ft
EXCLUDED AREAS: BASEMENT: 996 sq. ft, GARAGE: 505 sq. ft
Floor Plan Created By V1photos.com, Measurements Deamed Highly Reliable But Not Guaranteed.



Disclaimer: Sizes and Dimensions are Approximate, Actual May Vary.



Michelle Cuscaden
303-250-3786
m.cuscaden30@gmail.com
<https://michellecuscaden.myrealtyonegroup.com/>





TOTAL: 2394 sq. ft
BELOW GROUND: 0 sq. ft, FLOOR 2: 1057 sq. ft, FLOOR 3: 1337 sq. ft
EXCLUDED AREAS: BASEMENT: 996 sq. ft, GARAGE: 505 sq. ft
Floor Plan Created By V1photos.com, Measurements Deamed Highly Reliable But Not Guaranteed.

Disclaimer: Sizes and Dimensions are Approximate, Actual May Vary.



Michelle Cuscaden
303-250-3786
m.cuscaden30@gmail.com
<https://michellecuscaden.myrealtyonegroup.com/>





TOTAL: 2394 sq. ft
BELOW GROUND: 0 sq. ft, FLOOR 2: 1057 sq. ft, FLOOR 3: 1337 sq. ft
EXCLUDED AREAS: BASEMENT: 996 sq. ft, GARAGE: 505 sq. ft
Floor Plan Created By V1photos.com. Measurements Deamed Highly Reliable But Not Guaranteed.



Disclaimer: Sizes and Dimensions are Approximate, Actual May Vary.



Michelle Cuscaden
303-250-3786
m.cuscaden30@gmail.com
<https://michellecuscaden.myrealtyonegroup.com/>



Scan code
for more
property
details

