

## Live in the View



Single Family



3951 SQFT



3 Beds



3/1 Baths



2 Car



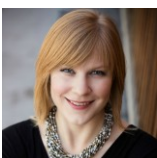
1.5 Acre

## PROPERTY DETAILS

Discover your peaceful retreat in the foothills of Boulder! Only 3 miles from North Boulder, this stunning home offers mountain living with town convenience. Spanning nearly 4000 sq ft, it features an open concept design and breathtaking 180-degree views of Boulder Valley.

Enjoy a 1200 sq ft composite deck, a newly fenced yard, and a large primary suite with a five-piece bath and private balcony. The sunlit loft leads to a wraparound balcony, while the spacious kitchen boasts a walk-in pantry and breakfast bar.

With a new fire-retardant roof and easy access to hiking and biking trails, this hilltop home is perfect for outdoor enthusiasts. Schedule a showing to experience the beauty firsthand!



**Jen Davis**  
303-912-7488  
Jen@DrewsHomeTeam.com



Scan code  
for more  
property  
details

