



5718 West Euclid Place
 Littleton, CO 80123
 COMMUNITY: Vintage Reserve

MLS # 9591354
 PRICE \$950,000



Single Family



2700 SQFT



4 Beds



2/1 Baths



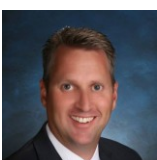
2 Car



0.16 Acre

PROPERTY DETAILS

This stunning 2700 sqft 4 bed, 3 bath home in Vintage Reserve, Littleton, features a main floor primary suite with a luxurious 5-piece bath and large walk-in closet. The modern design includes a main floor office, formal dining with coffered ceilings, and a spacious kitchen with stainless steel appliances, double ovens, and a breakfast nook. The family room boasts vaulted ceilings, a gas fireplace, and access to a backyard with a covered paverstone patio. Backing onto a greenbelt, the home offers miles of walking paths. The main level has hardwood flooring, while upstairs has 3 bedrooms, a full bath, and a loft. An unfinished 1900 sqft basement offers expansion potential. Recent updates include a new roof and exterior paint. Vintage Reserve features a clubhouse, playground, and scenic paths, making it an ideal neighborhood. This well-maintained home is a must-see.



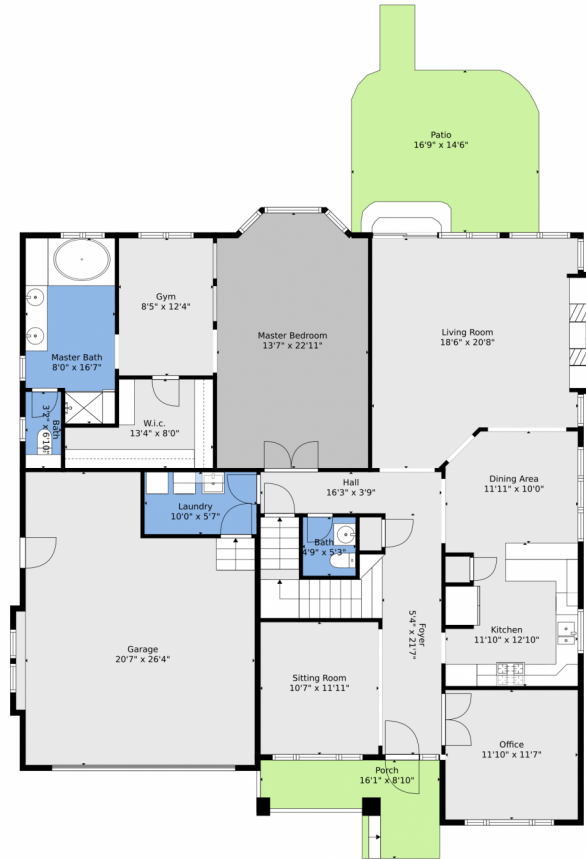
Greg Dach
 303-525-9006
 gregdach@remax.net



Scan code
 for more
 property
 details



5718 West Euclid Place, Littleton, CO 80123 – Main



TOTAL: 2692 sq. ft
BELOW GROUND: 0 sq. ft, FLOOR 2: 1922 sq. ft, FLOOR 3: 770 sq. ft
EXCLUDED AREAS: BASEMENT: 1796 sq. ft, PORCH: 101 sq. ft, PATIO: 256 sq. ft,
GARAGE: 489 sq. ft, OPEN TO BELOW: 339 sq. ft

Floor Plan Created By V1photos.com, Measurements Deamed Highly Reliable But Not Guaranteed.



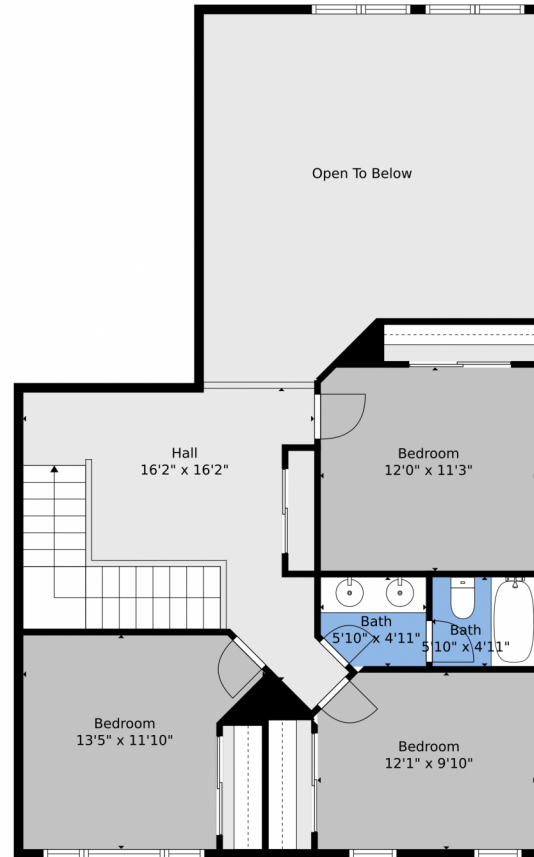
Disclaimer: Sizes and Dimensions are Approximate, Actual May Vary.



Greg Dach
303-525-9006
gregdach@remax.net



5718 West Euclid Place, Littleton, CO 80123 – 2nd Level



TOTAL: 2692 sq. ft
BELOW GROUND: 0 sq. ft, FLOOR 2: 1922 sq. ft, FLOOR 3: 770 sq. ft
EXCLUDED AREAS: BASEMENT: 1796 sq. ft, PORCH: 101 sq. ft, PATIO: 256 sq. ft,
GARAGE: 489 sq. ft, OPEN TO BELOW: 339 sq. ft

Floor Plan Created By V1photos.com, Measurements Deamed Highly Reliable But Not Guaranteed.



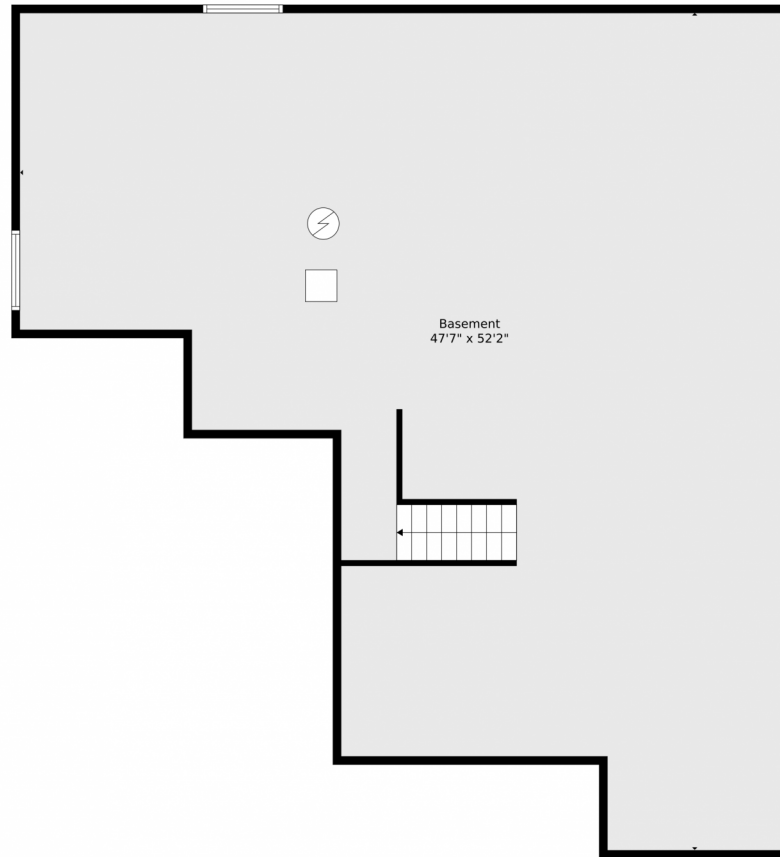
Disclaimer: Sizes and Dimensions are Approximate, Actual May Vary.



Greg Dach
303-525-9006
gregdach@remax.net



5718 West Euclid Place, Littleton, CO 80123 – Lower Level

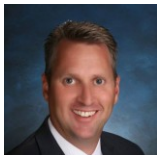


TOTAL: 2692 sq. ft
BELOW GROUND: 0 sq. ft, FLOOR 2: 1922 sq. ft, FLOOR 3: 770 sq. ft
EXCLUDED AREAS: BASEMENT: 1796 sq. ft, PORCH: 101 sq. ft, PATIO: 256 sq. ft,
GARAGE: 489 sq. ft, OPEN TO BELOW: 339 sq. ft

Floor Plan Created By V1photos.com, Measurements Deamed Highly Reliable But Not Guaranteed.



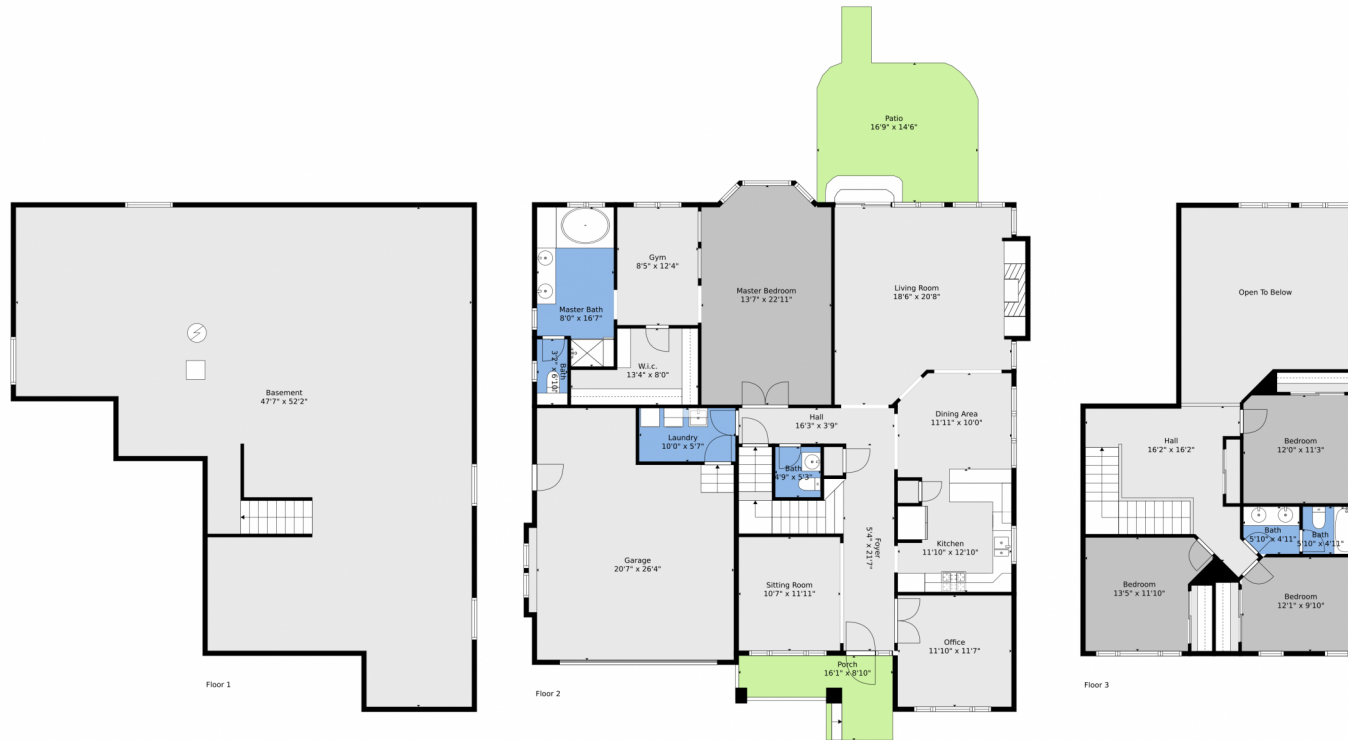
Disclaimer: Sizes and Dimensions are Approximate, Actual May Vary.



Greg Dach
303-525-9006
gregdach@remax.net



5718 West Euclid Place, Littleton, CO 80123 – All Levels



TOTAL: 2692 sq. ft
BELOW GROUND: 0 sq. ft, FLOOR 2: 1922 sq. ft, FLOOR 3: 770 sq. ft
EXCLUDED AREAS: BASEMENT: 1796 sq. ft, PORCH: 101 sq. ft, PATIO: 256 sq. ft,
GARAGE: 489 sq. ft, OPEN TO BELOW: 339 sq. ft

Floor Plan Created By V1photos.com, Measurements Deamed Highly Reliable But Not Guaranteed.



Disclaimer: Sizes and Dimensions are Approximate, Actual May Vary.



Greg Dach
303-525-9006
gregdach@remax.net

