





 Townhouse

 1800 SQFT

 3 Beds

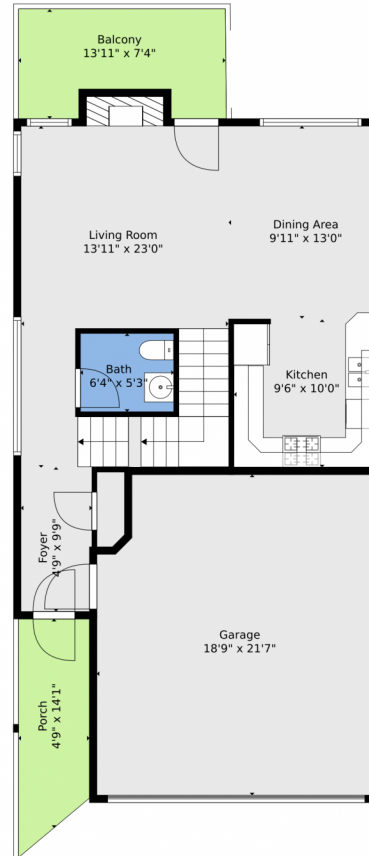
 2/1 Baths



Pandora & John Erlandson
303-888-6298
pandora@pandorajohnproperties.com
<https://www.pandorajohnproperties.com>



3671 Joyful Way, Unit A, Evergreen, CO 80439 – Main



TOTAL: 1948 sq. ft
BELOW GROUND: 756 sq. ft, FLOOR 2: 610 sq. ft, FLOOR 3: 582 sq. ft
EXCLUDED AREAS: ELECTRICAL ROOM: 73 sq. ft, GARAGE: 394 sq. ft, BALCONY: 91 sq. ft,
PORCH: 67 sq. ft, FIREPLACE: 12 sq. ft, OPEN TO BELOW: 319 sq. ft,
BAY WINDOW: 12 sq. ft

Floor Plan Created By V1photos.com, Measurements Deamed Highly Reliable But Not Guaranteed.



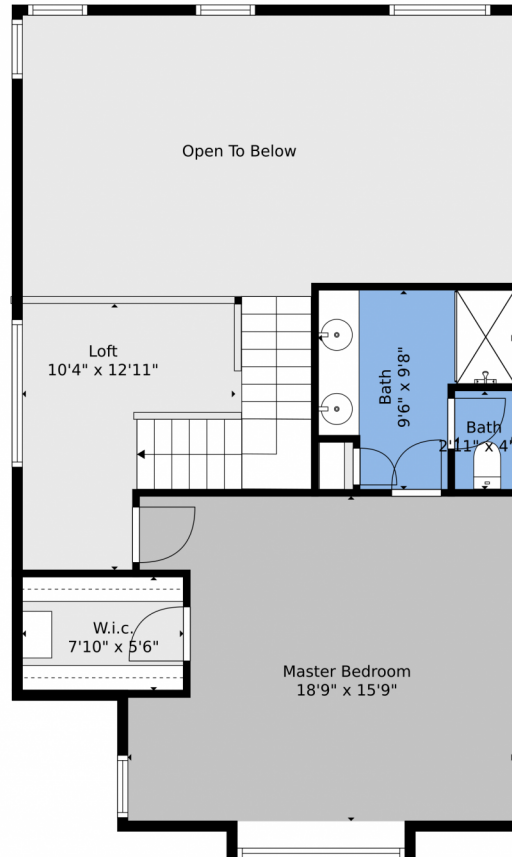
Disclaimer: Sizes and Dimensions are Approximate, Actual May Vary.



Pandora & John Erlandson
303-888-6298
pandora@pandorajohnproperties.com
<https://www.pandorajohnproperties.com>



3671 Joyful Way, Unit A, Evergreen, CO 80439 – 2nd Level



TOTAL: 1948 sq. ft
BELOW GROUND: 756 sq. ft, FLOOR 2: 610 sq. ft, FLOOR 3: 582 sq. ft
EXCLUDED AREAS: ELECTRICAL ROOM: 73 sq. ft, GARAGE: 394 sq. ft, BALCONY: 91 sq. ft,
PORCH: 67 sq. ft, FIREPLACE: 12 sq. ft, OPEN TO BELOW: 319 sq. ft,
BAY WINDOW: 12 sq. ft

Floor Plan Created By V1photos.com, Measurements Deamed Highly Reliable But Not Guaranteed.



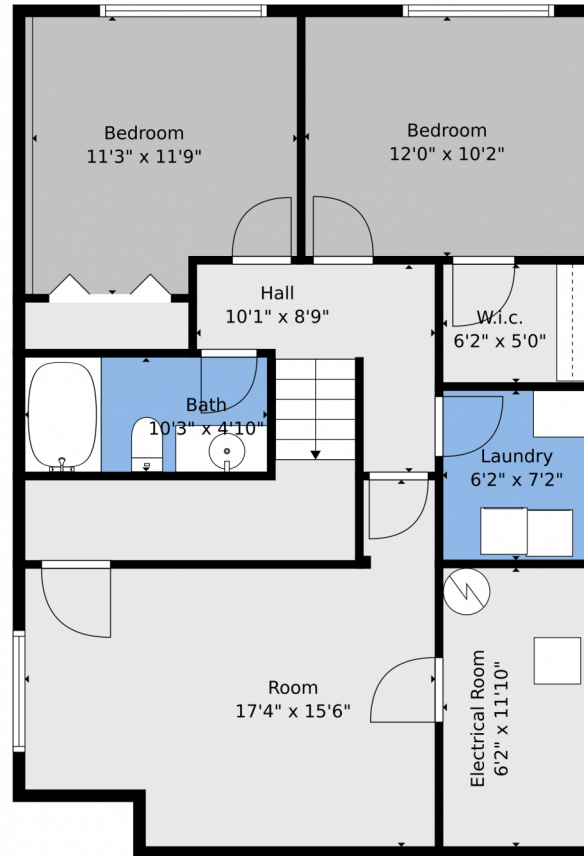
Disclaimer: Sizes and Dimensions are Approximate, Actual May Vary.



Pandora & John Erlandson
303-888-6298
pandora@pandorajohnproperties.com
<https://www.pandorajohnproperties.com>



3671 Joyful Way, Unit A, Evergreen, CO 80439 – Lower Level



TOTAL: 1948 sq. ft
BELOW GROUND: 756 sq. ft, FLOOR 2: 610 sq. ft, FLOOR 3: 582 sq. ft
EXCLUDED AREAS: ELECTRICAL ROOM: 73 sq. ft, GARAGE: 394 sq. ft, BALCONY: 91 sq. ft,
PORCH: 67 sq. ft, FIREPLACE: 12 sq. ft, OPEN TO BELOW: 319 sq. ft,
BAY WINDOW: 12 sq. ft

Floor Plan Created By V1photos.com. Measurements Deamed Highly Reliable But Not Guaranteed.



Disclaimer: Sizes and Dimensions are Approximate, Actual May Vary.



Pandora & John Erlandson

303-888-6298

pandora@pandorajohnproperties.com

<https://www.pandorajohnproperties.com>



Scan code
for more
property
details



3671 Joyful Way, Unit A, Evergreen, CO 80439 – All Levels



TOTAL: 1948 sq. ft
BELOW GROUND: 756 sq. ft, FLOOR 2: 610 sq. ft, FLOOR 3: 582 sq. ft
EXCLUDED AREAS: ELECTRICAL ROOM: 73 sq. ft, GARAGE: 394 sq. ft, BALCONY: 91 sq. ft,
PORCH: 67 sq. ft, FIREPLACE: 12 sq. ft, OPEN TO BELOW: 319 sq. ft,
BAY WINDOW: 12 sq. ft

Floor Plan Created By V1photos.com, Measurements Deamed Highly Reliable But Not Guaranteed.



Disclaimer: Sizes and Dimensions are Approximate, Actual May Vary.



Pandora & John Erlandson
303-888-6298
pandora@pandorajohnproperties.com
<https://www.pandorajohnproperties.com>

