



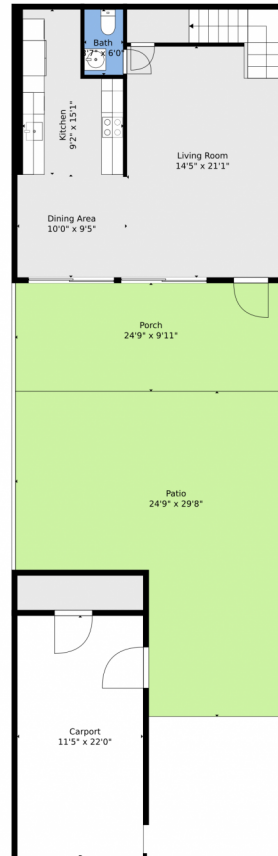
 Townhouse  1250 SQFT



Kenny Silverman
954-551-9099
kenny@silvermanfirst.com
<https://www.silvermanfirst.com/>



6 Hathaway Lane, Wilton Manors, FL 33305 – Main



TOTAL: 1206 sq. ft
BELOW GROUND: 625 sq. ft, FLOOR 2: 581 sq. ft
EXCLUDED AREAS: PATIO: 570 sq. ft, PORCH: 244 sq. ft, CARPORT: 253 sq. ft,
OPEN TO BELOW: 15 sq. ft, BAY WINDOW: 18 sq. ft

Floor Plan Created By V1photos.com, Measurements Deamed Highly Reliable But Not Guaranteed.



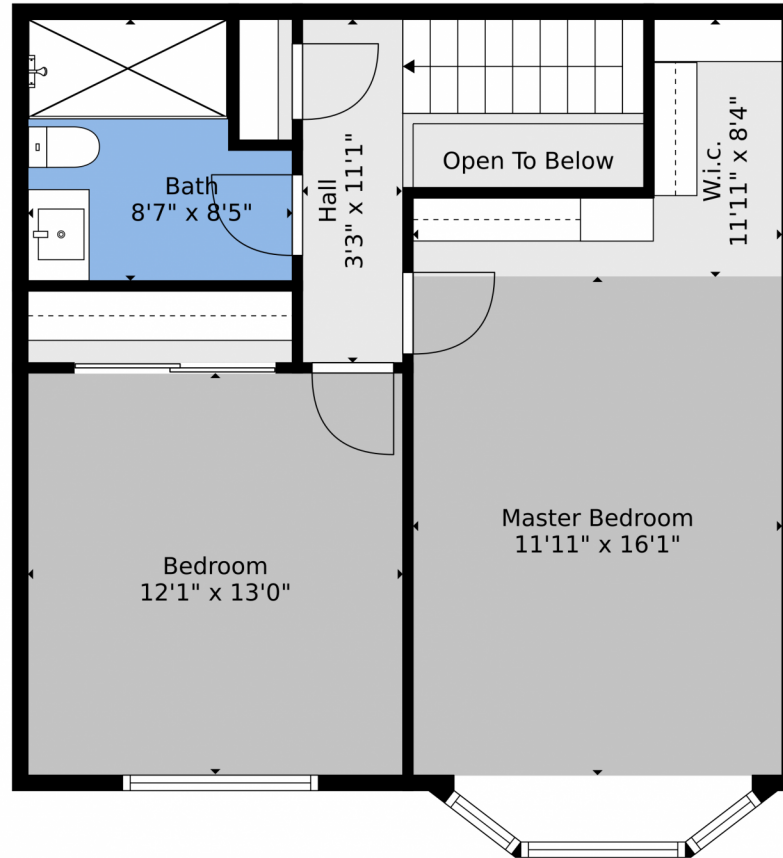
Disclaimer: Sizes and Dimensions are Approximate, Actual May Vary.



Kenny Silverman
954-551-9099
kenny@silvermanfirst.com
<https://www.silvermanfirst.com/>



6 Hathaway Lane, Wilton Manors, FL 33305 – 2nd Level



TOTAL: 1206 sq. ft
BELOW GROUND: 625 sq. ft, FLOOR 2: 581 sq. ft
EXCLUDED AREAS: PATIO: 570 sq. ft, PORCH: 244 sq. ft, CARPORT: 253 sq. ft,
OPEN TO BELOW: 15 sq. ft, BAY WINDOW: 18 sq. ft

Floor Plan Created By V1photos.com, Measurements Deamed Highly Reliable But Not Guaranteed.



Disclaimer: Sizes and Dimensions are Approximate, Actual May Vary.



Kenny Silverman
954-551-9099
kenny@silvermanfirst.com
<https://www.silvermanfirst.com/>



6 Hathaway Lane, Wilton Manors, FL 33305 – All Levels



TOTAL: 1206 sq. ft
BELOW GROUND: 625 sq. ft, FLOOR 2: 581 sq. ft
EXCLUDED AREAS: PATIO: 570 sq. ft, PORCH: 244 sq. ft, CARPORT: 253 sq. ft,
OPEN TO BELOW: 15 sq. ft, BAY WINDOW: 18 sq. ft

Floor Plan Created By V1photos.com, Measurements Deamed Highly Reliable But Not Guaranteed.



Disclaimer: Sizes and Dimensions are Approximate, Actual May Vary.



Kenny Silverman
954-551-9099
kenny@silvermanfirst.com
<https://www.silvermanfirst.com/>

