



Single Family

2318 SQFT

4 Beds

2 Baths

1 Car



**Paul D. Andrews**  
720-270-1306  
andrews.realtor@gmail.com  
<https://www.greaterdenverhomesite.com/paul-andrews/>

Scan code for more property details

# 5007 South Perry Street, Littleton, CO 80123 – Main



**TOTAL: 2150 sq. ft**  
BELOW GROUND: 1075 sq. ft, FLOOR 2: 1075 sq. ft  
EXCLUDED AREAS: PORCH: 26 sq. ft, PATIO: 252 sq. ft, GARAGE: 295 sq. ft  
Floor Plan Created By V1photos.com, Measurements Deamed Highly Reliable But Not Guaranteed.



Disclaimer: Sizes and Dimensions are Approximate, Actual May Vary.



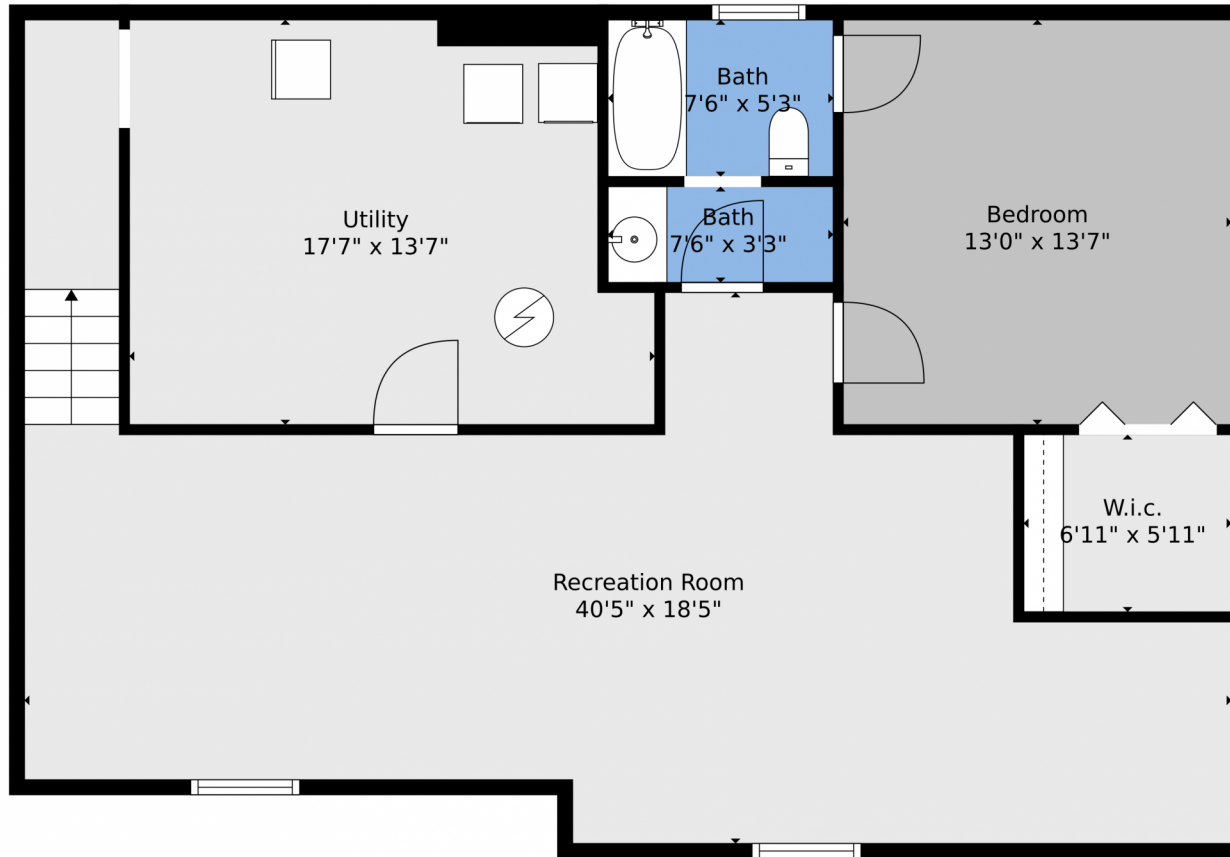
**Paul D. Andrews**  
720-270-1306  
andrews.realtor@gmail.com  
<https://www.greaterdenverhomesite.com/paul-andrews/>



Scan code  
for more  
property  
details



5007 South Perry Street, Littleton, CO 80123 – Lower Level



**TOTAL: 2150 sq. ft**  
BELOW GROUND: 1075 sq. ft, FLOOR 2: 1075 sq. ft  
EXCLUDED AREAS: PORCH: 26 sq. ft, PATIO: 252 sq. ft, GARAGE: 295 sq. ft  
Floor Plan Created By V1photos.com. Measurements Deamed Highly Reliable But Not Guaranteed.



Disclaimer: Sizes and Dimensions are Approximate, Actual May Vary.



**Paul D. Andrews**  
720-270-1306  
andrews.realtor@gmail.com  
<https://www.greaterdenverhomesite.com/paul-andrews/>



# 5007 South Perry Street, Littleton, CO 80123 – All Levels



**TOTAL: 2150 sq. ft**  
BELOW GROUND: 1075 sq. ft, FLOOR 2: 1075 sq. ft  
EXCLUDED AREAS: PORCH: 26 sq. ft, PATIO: 252 sq. ft, GARAGE: 295 sq. ft  
Floor Plan Created By V1photos.com, Measurements Deamed Highly Reliable But Not Guaranteed.



Disclaimer: Sizes and Dimensions are Approximate, Actual May Vary.



**Paul D. Andrews**  
720-270-1306  
andrews.realtor@gmail.com  
<https://www.greaterdenverhomesite.com/paul-andrews/>

