




 Single Family

 1976 SQFT

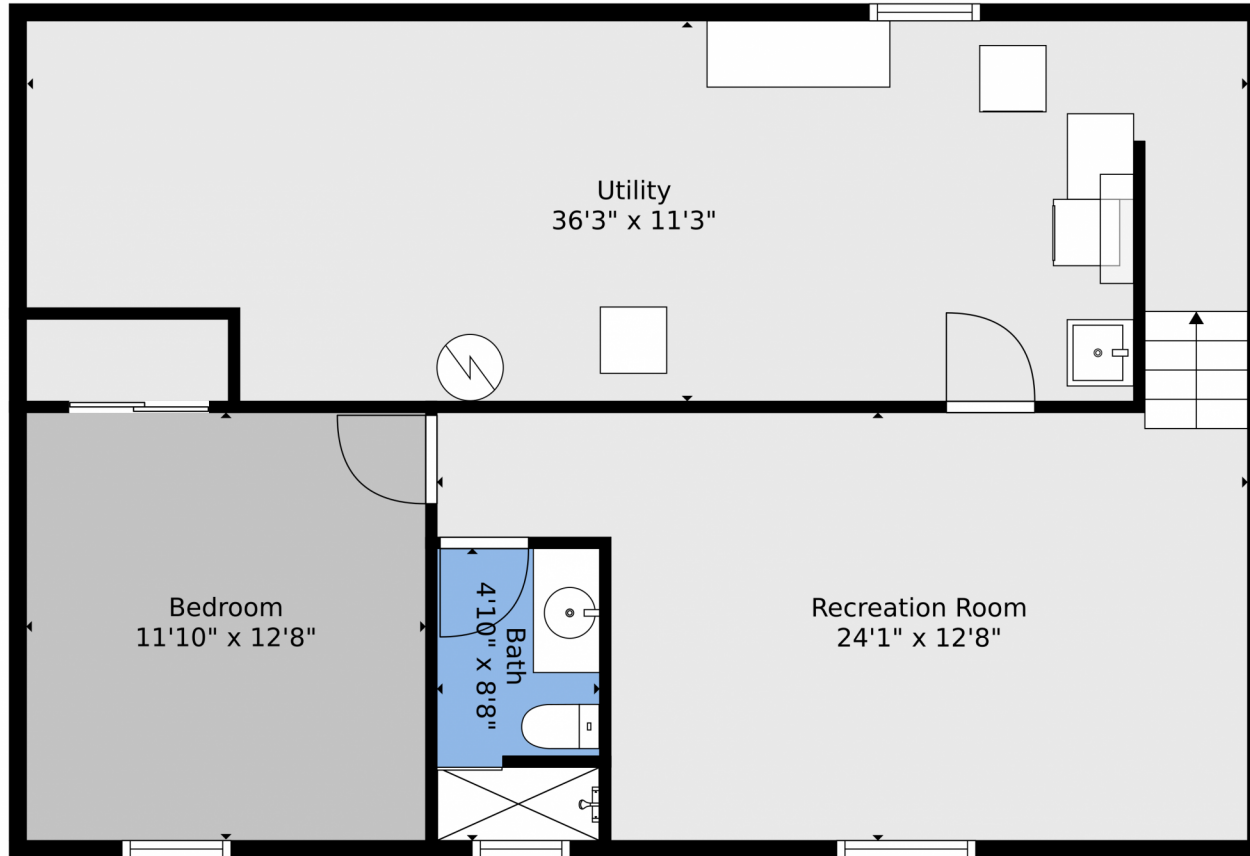
 3 Beds

 2 Baths



**Taylor Haas**  
303-665-7368  
taylorh@coloradorpm.com  
<https://www.coloradorpm.com/available-rental-properties-denver>





**TOTAL: 1386 sq. ft**  
BELOW GROUND: 500 sq. ft, FLOOR 2: 886 sq. ft  
EXCLUDED AREAS: UTILITY: 383 sq. ft, GARAGE: 401 sq. ft, STORAGE: 76 sq. ft,  
PORCH: 110 sq. ft, SCREENED PORCH: 390 sq. ft

Floor Plan Created By V1photos.com, Measurements Deamed Highly Reliable But Not Guaranteed.



Disclaimer: Sizes and Dimensions are Approximate, Actual May Vary.



**Taylor Haas**

303-665-7368

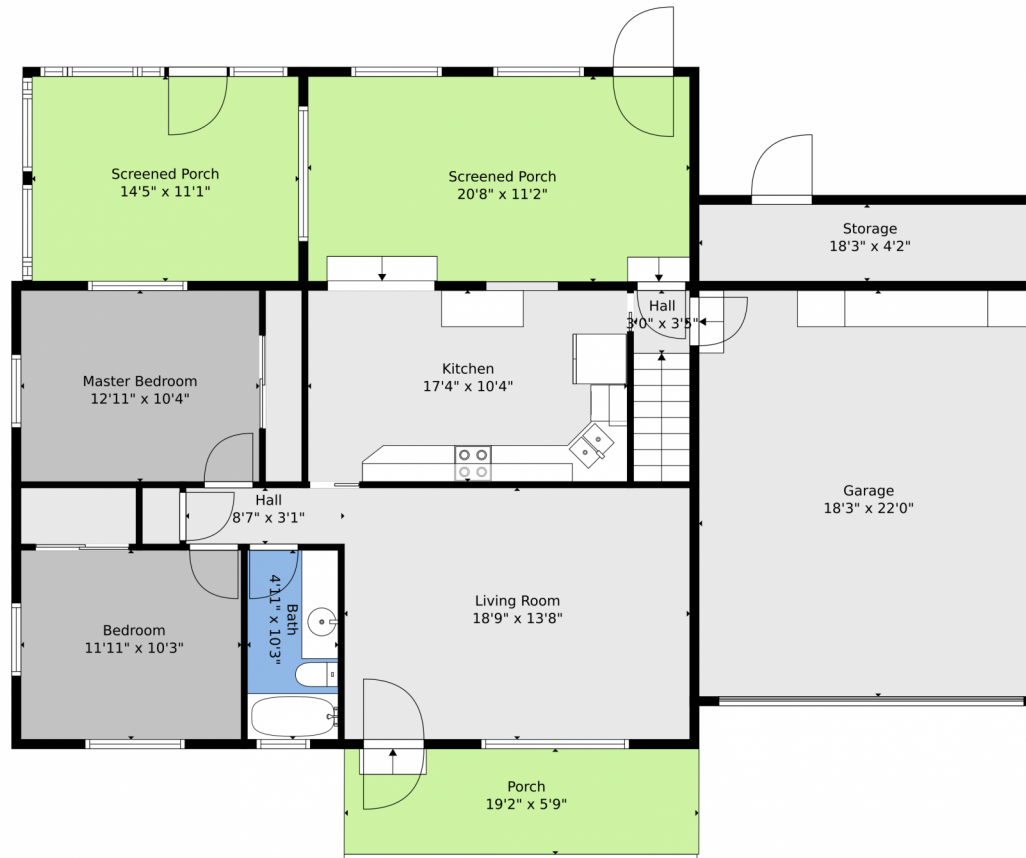
taylorh@coloradorpm.com

<https://www.coloradorpm.com/available-rental-properties-denver>



Scan code  
for more  
property  
details





**TOTAL: 1386 sq. ft**  
BELOW GROUND: 500 sq. ft, FLOOR 2: 886 sq. ft  
EXCLUDED AREAS: UTILITY: 383 sq. ft, GARAGE: 401 sq. ft, STORAGE: 76 sq. ft,  
PORCH: 110 sq. ft, SCREENED PORCH: 390 sq. ft

Floor Plan Created By V1photos.com, Measurements Deamed Highly Reliable But Not Guaranteed.



Disclaimer: Sizes and Dimensions are Approximate, Actual May Vary.



**Taylor Haas**

303-665-7368

taylorh@coloradorpm.com

<https://www.coloradorpm.com/available-rental-properties-denver>



Scan code  
for more  
property  
details



# 8691 Norwich Street, Westminster, CO 80031 – All Levels



**TOTAL: 1386 sq. ft**  
BELOW GROUND: 500 sq. ft, FLOOR 2: 886 sq. ft  
EXCLUDED AREAS: UTILITY: 383 sq. ft, GARAGE: 401 sq. ft, STORAGE: 76 sq. ft,  
PORCH: 110 sq. ft, SCREENED PORCH: 390 sq. ft

Floor Plan Created By V1photos.com, Measurements Deamed Highly Reliable But Not Guaranteed.



Disclaimer: Sizes and Dimensions are Approximate, Actual May Vary.



**Taylor Haas**

303-665-7368

taylorh@coloradorpm.com

<https://www.coloradorpm.com/available-rental-properties-denver>



Scan code  
for more  
property  
details

