




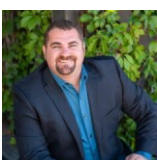
 Single Family

 3500 SQFT

 5 Beds

 3 Baths

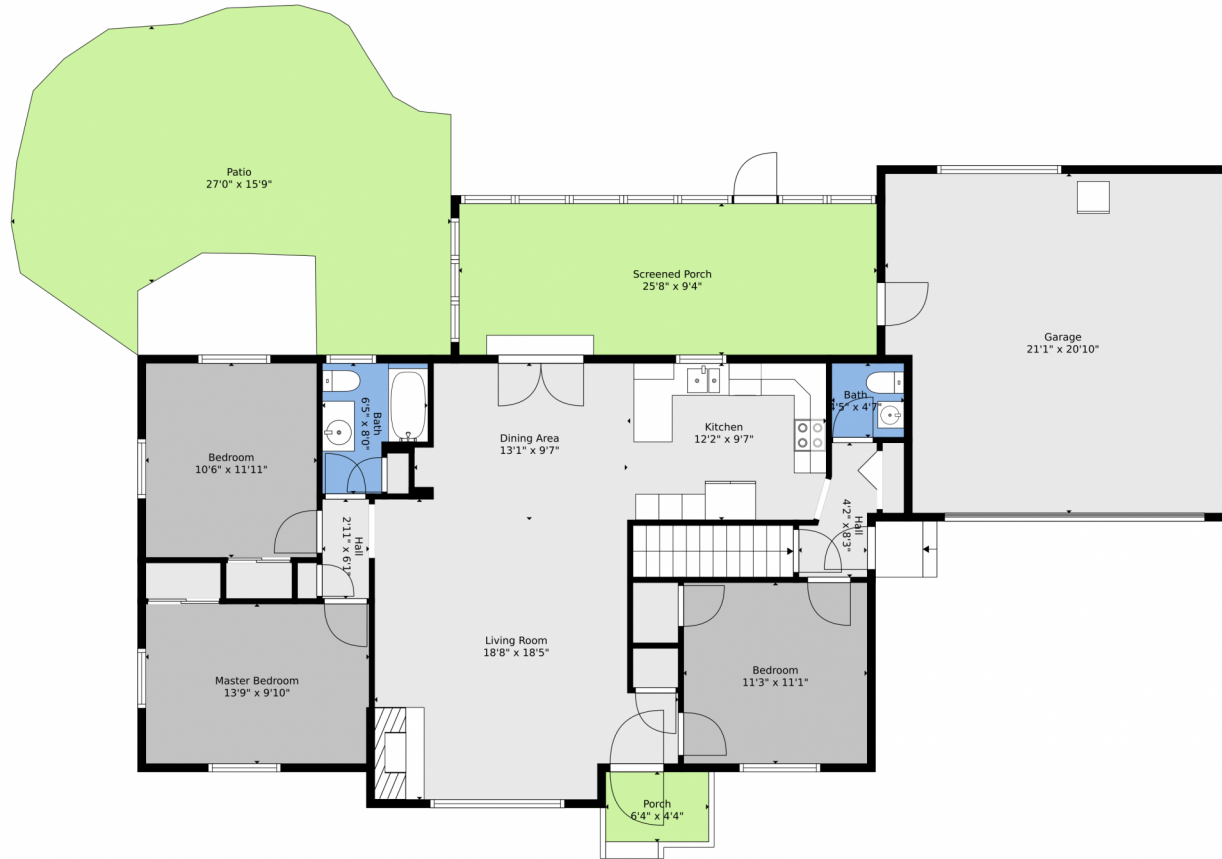
 2 Car



Brad Inhulsen
970-584-4144
brad@searsrealestate.com



2020 18th Avenue, Greeley, CO 80631 — Main



TOTAL: 2234 sq. ft
BELOW GROUND: 1093 sq. ft, FLOOR 2: 1141 sq. ft
EXCLUDED AREAS: ELECTRICAL ROOM: 27 sq. ft, PORCH: 27 sq. ft, SCREENED PORCH: 238 sq. ft,
PATIO: 427 sq. ft, GARAGE: 423 sq. ft

Floor Plan Created By V1photos.com, Measurements Deamed Highly Reliable But Not Guaranteed.



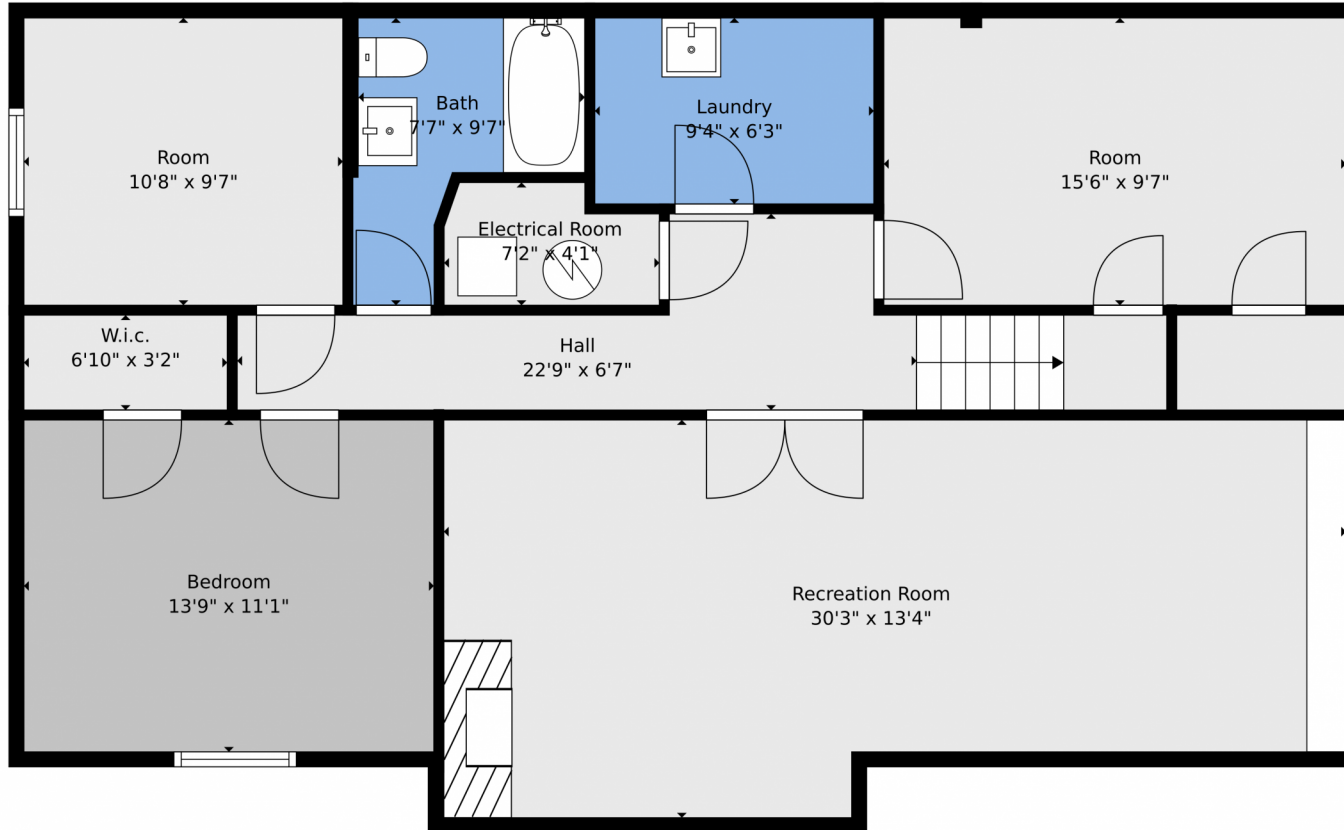
Disclaimer: Sizes and Dimensions are Approximate, Actual May Vary.



Brad Inhulsen
970-584-4144
brad@searsrealestate.com



2020 18th Avenue, Greeley, CO 80631 – Lower Level



TOTAL: 2234 sq. ft
BELOW GROUND: 1093 sq. ft, FLOOR 2: 1141 sq. ft
EXCLUDED AREAS: ELECTRICAL ROOM: 27 sq. ft, PORCH: 27 sq. ft, SCREENED PORCH: 238 sq. ft,
PATIO: 427 sq. ft, GARAGE: 423 sq. ft

Floor Plan Created By V1photos.com, Measurements Deamed Highly Reliable But Not Guaranteed.



Disclaimer: Sizes and Dimensions are Approximate, Actual May Vary.



Brad Inhulsen
970-584-4144
brad@searsrealestate.com



Scan code
for more
property
details



2020 18th Avenue, Greeley, CO 80631 – All Levels



Floor 2



Floor 1

TOTAL: 2234 sq. ft
BELOW GROUND: 1093 sq. ft, FLOOR 2: 1141 sq. ft
EXCLUDED AREAS: ELECTRICAL ROOM: 27 sq. ft, PORCH: 27 sq. ft, SCREENED PORCH: 238 sq. ft,
PATIO: 427 sq. ft, GARAGE: 423 sq. ft

Floor Plan Created By V1photos.com, Measurements Deamed Highly Reliable But Not Guaranteed.



Disclaimer: Sizes and Dimensions are Approximate, Actual May Vary.



Brad Inhulsen
970-584-4144
brad@searsrealestate.com

