


 Single Family

 2466 SQFT

 4 Beds

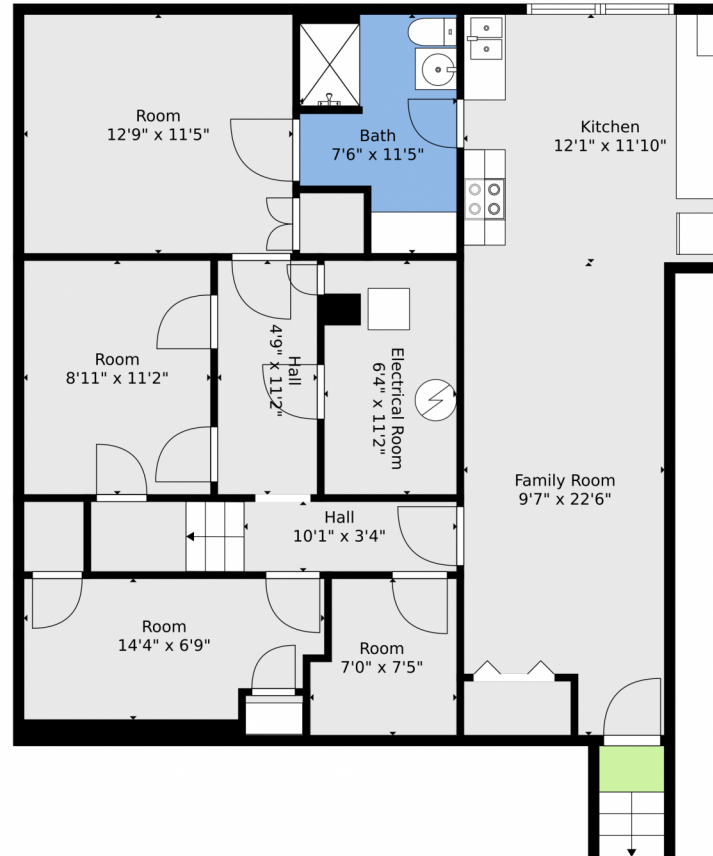
 2 Baths

 2 Car

Terry Moss
720-651-1734
tmoss@wedgewoodhomes.com



1318 East Pikes Peak Avenue, Colorado Springs, CO 80909 – Lower Level



TOTAL: 2191 sq. ft
BELOW GROUND: 959 sq. ft, FLOOR 2: 1232 sq. ft
EXCLUDED AREAS: ROOM: 48 sq. ft, ELECTRICAL ROOM: 70 sq. ft, PORCH: 92 sq. ft,
PATIO: 267 sq. ft, FIREPLACE: 11 sq. ft

Floor Plan Created By V1photos.com, Measurements Deamed Highly Reliable But Not Guaranteed.

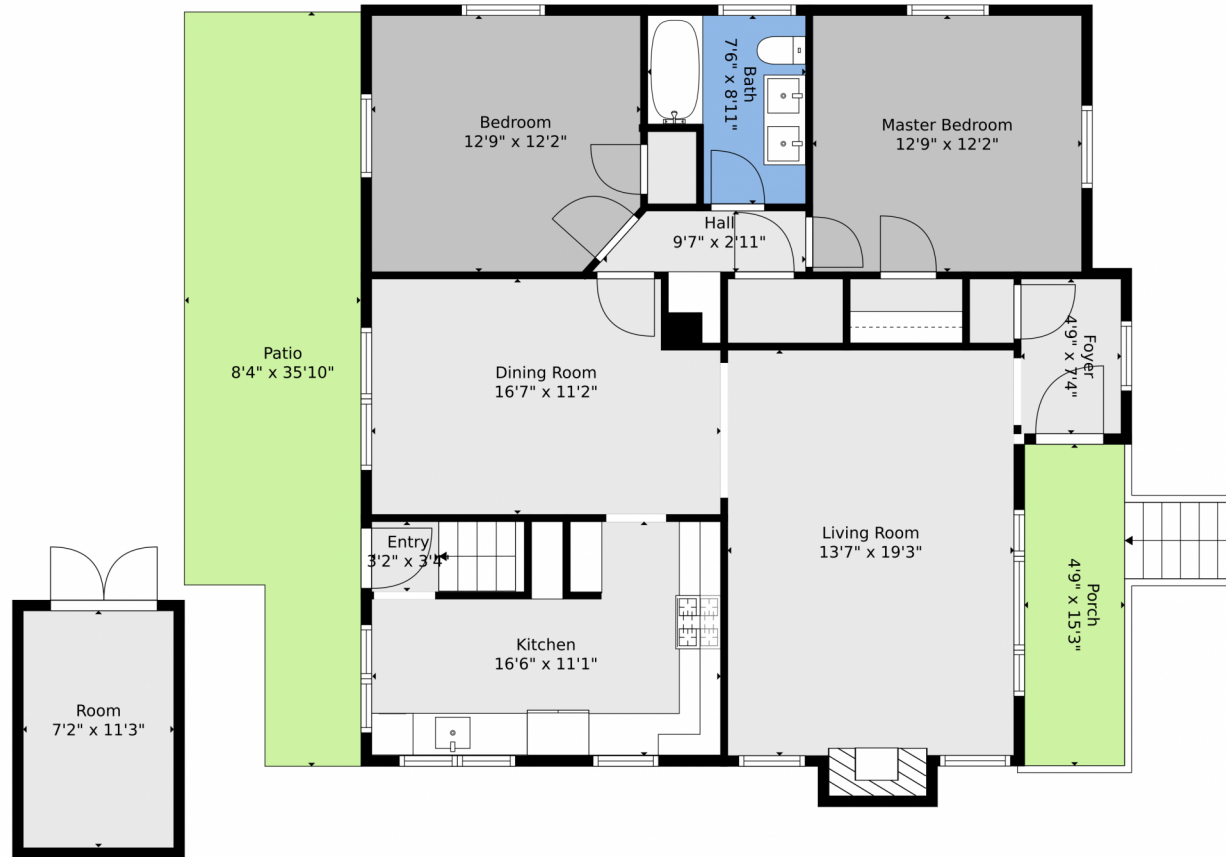


Disclaimer: Sizes and Dimensions are Approximate, Actual May Vary.

Terry Moss
720-651-1734
tmoss@wedgewoodhomes.com



1318 East Pikes Peak Avenue, Colorado Springs, CO 80909 – Main



TOTAL: 2191 sq. ft
BELOW GROUND: 959 sq. ft, FLOOR 2: 1232 sq. ft
EXCLUDED AREAS: ROOM: 48 sq. ft, ELECTRICAL ROOM: 70 sq. ft, PORCH: 92 sq. ft,
PATIO: 267 sq. ft, FIREPLACE: 11 sq. ft

Floor Plan Created By V1photos.com, Measurements Deamed Highly Reliable But Not Guaranteed.

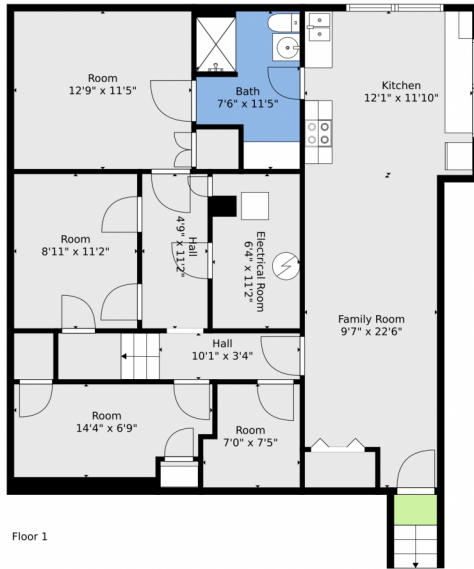


Disclaimer: Sizes and Dimensions are Approximate, Actual May Vary.

Terry Moss
720-651-1734
tmoss@wedgewoodhomes.com



1318 East Pikes Peak Avenue, Colorado Springs, CO 80909 – All Levels



Floor 1



Floor 2

TOTAL: 2191 sq. ft
 BELOW GROUND: 959 sq. ft, FLOOR 2: 1232 sq. ft
 EXCLUDED AREAS: ROOM: 48 sq. ft, ELECTRICAL ROOM: 70 sq. ft, PORCH: 92 sq. ft,
 PATIO: 267 sq. ft, FIREPLACE: 11 sq. ft

Floor Plan Created By V1photos.com. Measurements Deamed Highly Reliable But Not Guaranteed.



Disclaimer: Sizes and Dimensions are Approximate, Actual May Vary.

Terry Moss
 720-651-1734
 tmoss@wedgewoodhomes.com

