



45148 County Road 33  
 Pierce, CO 80650  
 COMMUNITY: N/A

MLS # 3849964  
 PRICE \$700,000



Single Family



2280 SQFT



4 Beds



2 Baths



4 Car



4.14 Acre

## PROPERTY DETAILS

Experience country living in this stunning home on 4 acres, free from HOA restrictions. Enjoy a bright, open layout with high ceilings and wood beams. The upgraded kitchen features double ovens, stainless steel appliances, a large pantry, and a commercial-grade refrigerator. The primary suite offers a walk-in closet, soaking tub, and a luxurious double shower with a rainfall showerhead. For vehicles and equipment, the insulated 1,200 sq ft garage/shop includes a pellet stove and Wi-Fi-enabled doors. The property is animal-ready, featuring a fully fenced pasture with a solar electric fence, a tack room, and a run-in shelter. Relax in the hot tub while being just 15 miles from Greeley!



**Taylor Bunney**  
 720-606-1503  
 taylorbunney.realtor@gmail.com



Scan code  
 for more  
 property  
 details

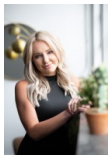




**TOTAL: 2223 sq. ft**  
BELOW GROUND: 0 sq. ft, FLOOR 2: 2223 sq. ft  
EXCLUDED AREAS: GARAGE: 1158 sq. ft, COVERED PATIO: 281 sq. ft  
Floor Plan Created By V1photos.com, Measurements Deamed Highly Reliable But Not Guaranteed.



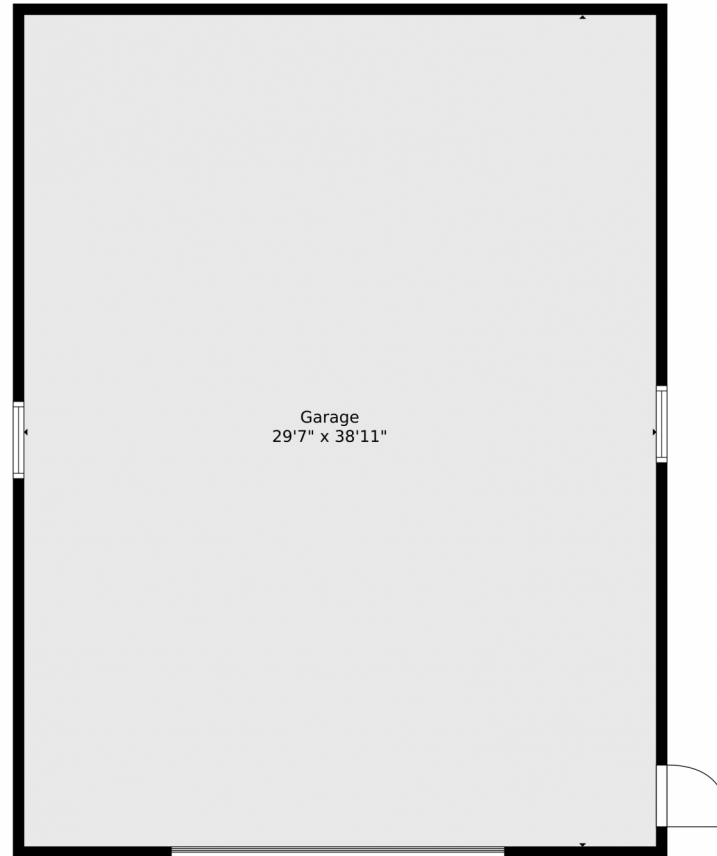
Disclaimer: Sizes and Dimensions are Approximate, Actual May Vary.



**Taylor Bunney**  
720-606-1503  
taylorbunney.realtor@gmail.com



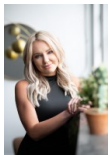
45148 County Road 33, Pierce, CO 80650 – Detached Garage



**TOTAL: 2223 sq. ft**  
BELOW GROUND: 0 sq. ft, FLOOR 2: 2223 sq. ft  
EXCLUDED AREAS: GARAGE: 1158 sq. ft, COVERED PATIO: 281 sq. ft  
Floor Plan Created By V1photos.com, Measurements Deamed Highly Reliable But Not Guaranteed.



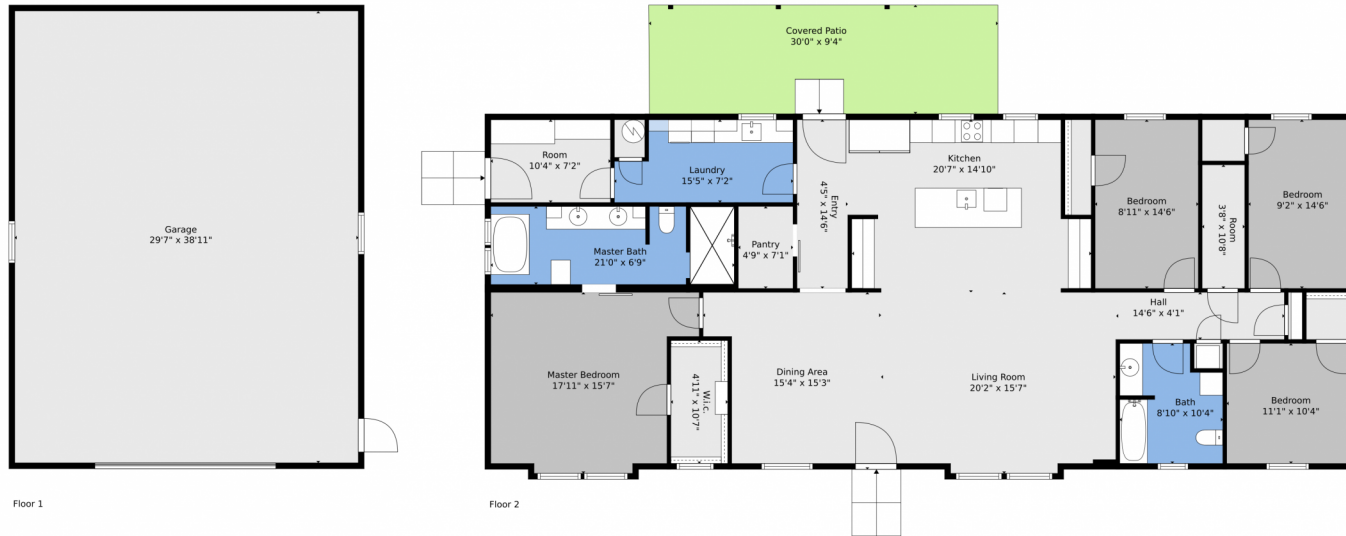
Disclaimer: Sizes and Dimensions are Approximate, Actual May Vary.



**Taylor Bunney**  
720-606-1503  
taylorbunney.realtor@gmail.com



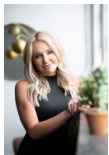
# 45148 County Road 33, Pierce, CO 80650 – All Levels



**TOTAL: 2223 sq. ft**  
BELOW GROUND: 0 sq. ft, FLOOR 2: 2223 sq. ft  
EXCLUDED AREAS: GARAGE: 1158 sq. ft, COVERED PATIO: 281 sq. ft  
Floor Plan Created By V1photos.com, Measurements Deamed Highly Reliable But Not Guaranteed.



Disclaimer: Sizes and Dimensions are Approximate, Actual May Vary.



**Taylor Bunney**  
720-606-1503  
taylorbunney.realtor@gmail.com



Scan code  
for more  
property  
details