





floorplan_all_0



 Single Family

 2740 SQFT

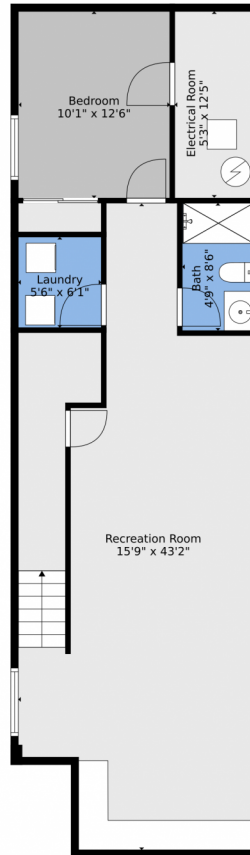
 4 Beds

 3/1 Baths



Taylor Haas
 303-665-7368
 taylorh@coloradorpm.com
<https://www.coloradorpm.com/available-rental-properties-denver>





TOTAL: 2409 sq. ft
BELOW GROUND: 790 sq. ft, FLOOR 2: 887 sq. ft, FLOOR 3: 732 sq. ft
EXCLUDED AREAS: ELECTRICAL ROOM: 66 sq. ft
Floor Plan Created By V1photos.com, Measurements Deamed Highly Reliable But Not Guaranteed.

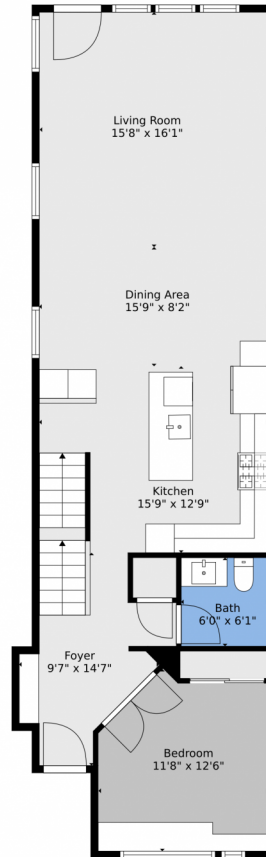


Disclaimer: Sizes and Dimensions are Approximate, Actual May Vary.



Taylor Haas
303-665-7368
taylorh@coloradorpm.com
<https://www.coloradorpm.com/available-rental-properties-denver>





TOTAL: 2409 sq. ft
BELOW GROUND: 790 sq. ft, FLOOR 2: 887 sq. ft, FLOOR 3: 732 sq. ft
EXCLUDED AREAS: ELECTRICAL ROOM: 66 sq. ft
Floor Plan Created By V1photos.com, Measurements Deamed Highly Reliable But Not Guaranteed.

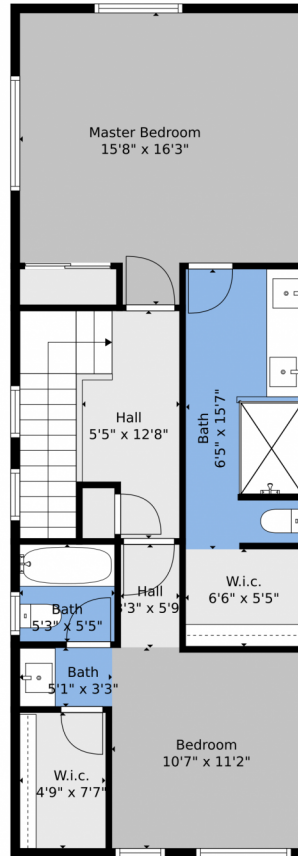
Disclaimer: Sizes and Dimensions are Approximate, Actual May Vary.



Taylor Haas
303-665-7368
taylorh@coloradorpm.com
<https://www.coloradorpm.com/available-rental-properties-denver>



Scan code
for more
property
details



TOTAL: 2409 sq. ft
BELOW GROUND: 790 sq. ft, FLOOR 2: 887 sq. ft, FLOOR 3: 732 sq. ft
EXCLUDED AREAS: ELECTRICAL ROOM: 66 sq. ft
Floor Plan Created By V1photos.com, Measurements Deamed Highly Reliable But Not Guaranteed.



Disclaimer: Sizes and Dimensions are Approximate, Actual May Vary.



Taylor Haas
303-665-7368
taylorh@coloradorpm.com
<https://www.coloradorpm.com/available-rental-properties-denver>





Floor 1

Floor 2

Floor 3

TOTAL: 2409 sq. ft
BELOW GROUND: 790 sq. ft, FLOOR 2: 887 sq. ft, FLOOR 3: 732 sq. ft
EXCLUDED AREAS: ELECTRICAL ROOM: 66 sq. ft

Floor Plan Created By V1photos.com, Measurements Deamed Highly Reliable But Not Guaranteed.



Disclaimer: Sizes and Dimensions are Approximate, Actual May Vary.



Taylor Haas

303-665-7368

taylorh@coloradorpm.com

<https://www.coloradorpm.com/available-rental-properties-denver>



Scan code
for more
property
details

