



Condominium



942 SQFT



2 Beds



2 Baths



0.01 Acre

PROPERTY DETAILS

This lovely condominium features two bedrooms and one and a half bathrooms within 942 square feet. The inviting living room boasts a charming brick fireplace and a sliding glass door for natural light. Light hard surface flooring enhances the freshly painted interior, perfect for relaxation or entertaining. The modern kitchen includes a stainless steel refrigerator, double oven with air fry functionality, dishwasher, and white cabinetry. Enjoy the private balcony overlooking the courtyard. Located in the Sable Landing community, residents benefit from a fenced outdoor pool, elevators, and security. Conveniently close to schools, parks, shopping, highways, and Denver International Airport!



Beth Gibson
720-849-3577
bethgibson@kw.com
<https://bethgibson.kw.com/>

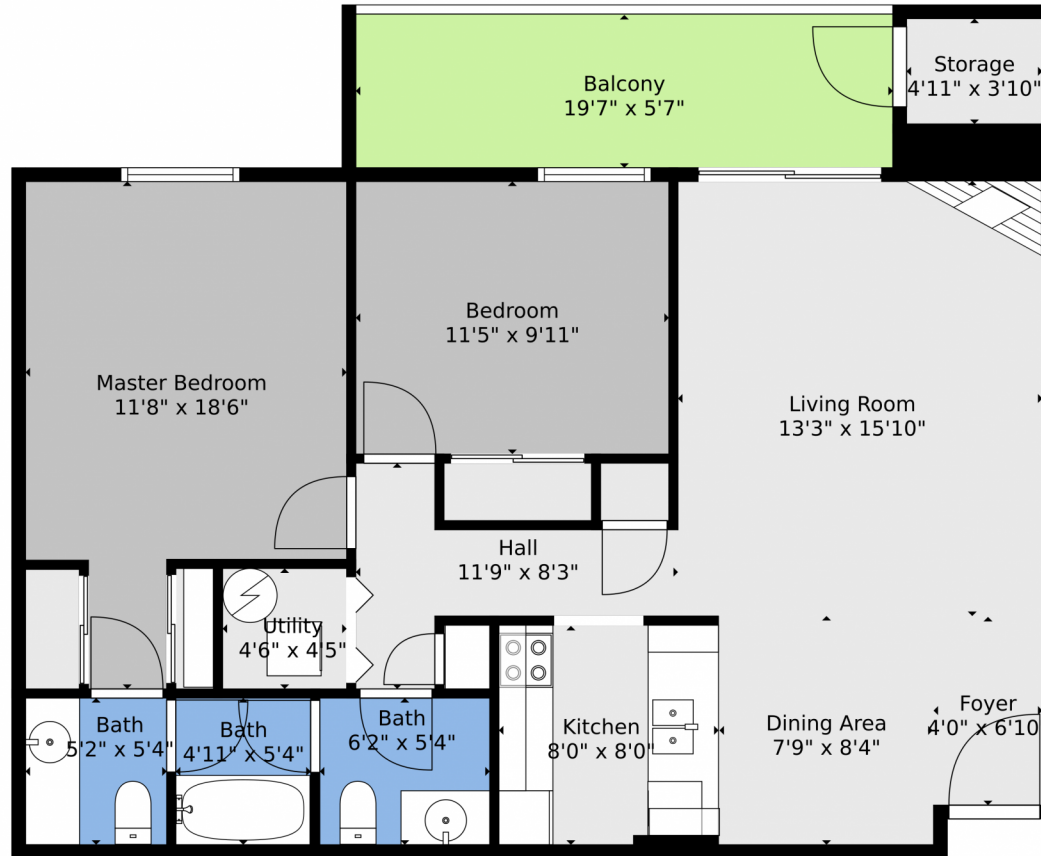


Phil Gibson
303-325-6020
philgibson@kw.com
<https://unitygroup.kw.com/>



Scan code
for more
property
details





TOTAL: 903 sq. ft
FLOOR 1: 903 sq. ft
EXCLUDED AREAS: STORAGE: 19 sq. ft, BALCONY: 110 sq. ft

Floor Plan Created By V1photos.com. Measurements Deamed Highly Reliable But Not Guaranteed.



Disclaimer: Sizes and Dimensions are Approximate, Actual May Vary.



Beth Gibson
720-849-3577
bethgibson@kw.com
<https://bethgibson.kw.com/>



Phil Gibson
303-325-6020
philgibson@kw.com
<https://unitygroup.kw.com/>

Scan code
for more
property
details

